

AMERICANA  
FINE ARTS AND MARINE AUCTION  
AUGUST 1, 2015



RAFAEL OSONA  
AUCTIONEER & APPRAISER

## CONDITIONS OF SALE

1. Rafael Osona Auctions has exercised reasonable care to catalog and describe correctly the property to be sold, but neither Osona's nor its consignors warrant the correctness of description, attribution, authenticity, physical condition, size, or quality of any property listed in this catalogue. All property offered in this catalogue is sold "AS IS". Prospective bidders should inspect property before bidding to determine its genuineness, authenticity, and whether or not it has been repaired or restored. No sale will be set aside on account of incorrectness, error of cataloguing, or imperfections not noted.
2. Rafael Osona Auctions reserves the right to withdraw any property before or during the sale. The highest bidder acknowledged by the auctioneer will be the purchaser. In the event of any dispute between two or more bidders, the auctioneer shall decide the outcome or may re-offer the article in dispute and his or her decision shall be final.
3. If the auctioneer determines that any opening bid is insufficient, he or she may reject the bid and if having acknowledged any opening bid, he or she decides that any advance thereafter is insufficient, he or she may reject the advance.
4. Some lots may be offered subject to a reserve. The Gallery will execute such reserves by bidding for the consignor. In any event or whether or not a lot is subject to a reserve, the auctioneer may reject any bid or raise not commensurate with the value of such a lot.
5. We will execute absentee bids or accept telephone bids as a convenience to clients who are not present at the auction; however, we are not responsible for any errors or omissions, in connection with their bid. Any execution of absentee or telephone bid by prospective bidders indicates their acceptance of all conditions of sale.
6. Personal and business checks are accepted only if credit has been established with Rafael Osona Auctions, or if bank authorization has been received guaranteeing a personal check. Full payment for each purchaser's account must be received on the date of purchase in the form of cash or check. We reserve the right to hold merchandise purchased by personal or business check until the check has cleared the bank, if we deem such action necessary.
7. The purchase price payable will be the aggregate of the final bid and a premium of 19% of the final bid.
8. All purchases including the premium of 19% are subject to the Massachusetts sales tax (currently 6.25%) unless the purchaser possesses a Massachusetts sales tax exemption or resale number and provides a copy of that certificate upon registering for the auction.
9. A paid receipt of the purchase must be presented before goods may be removed from the Gallery.
10. All purchases whether in person, phone bids, or absentee bids must be picked up by 5:00pm the day of the sale, or arrangements must be made for on-island delivery or off-island shipping. The purchaser assumes all risk in regards to the merchandise purchased at the fall of the hammer. We are not responsible for the acts or omissions of truckers or packers of purchased lots, whether or not recommended by us. Packing and handling of purchased lots is at the entire risk of the purchaser.
11. Bidding on any items indicates your acceptance of these terms.

# PUBLIC AUCTION

*Americana, Fine Art, Marine Auction*

**SATURDAY, AUGUST 1<sup>ST</sup> 2015, AT 9:30 AM**

## **EXHIBITION:**

Thursday, July 30<sup>th</sup> from 10:00am to 5:00pm

Friday, July 31<sup>st</sup> from 10:00am to 5:00pm

## **AT THE**

American Legion Hall, 21 Washington Street  
Nantucket Island, Massachusetts

*Featuring Fine Collections Including  
The Nantucket Estate of Georgia P. Gosnell  
The Palm Beach Estate of Marion Ross  
A San Juan Capistrano Gentleman Collector  
and Others*

---

**RAFAEL OSONA**  
**AUCTIONEER & APPRAISER**

**P.O BOX 2607 • NANTUCKET, MA 02584**  
**LIC. 366**

**Tel. (508) 228-3942**

**Fax (508) 228-8778**

**info@RafaelOsonaAuctions.com**

**www.RafaelOsonaAuctions.com**



**1. PAIR OF ENGLISH STAFFORDSHIRE SPILL VASES**, circa 1850, pheasants on tree branch. Height 8 ½ in.



**2. PAIR OF STAFFORDSHIRE PEARLWARE BIRDS STANDING ON FOLIAGE**, circa 1860. Height 10 in.

**3. BAMBOO PEDESTAL**, circa 1880. Height 49 in.

**4. BAMBOO AND WICKER PLANT STAND**, circa 1880. Height 83 in.



**5. ENGLISH STAFFORDSHIRE PEARLWARE TROPICAL BIRD PERCHED ON A LOG**, circa 1850. Height 13 in.

**6. ENGLISH STAFFORDSHIRE PEARLWARE TROPICAL BIRD PERCHED ON HILLSIDE WITH ANIMAL**, circa 1850. Height 13 in.

**7. PAIR OF ENGLISH STAFFORDSHIRE PEARLWARE BLACK BEAKED DOVES MOUNTED ON HILLSIDE**, circa 1880. Height 12 in.

**8. LOUIS XV FRENCH PROVINCIAL CHESTNUT COMMUNE**, 18<sup>th</sup> Century, cabriole legs on pad feet, block and paneled drawers on shaped skirt. Height 33 in. Width 48 ½ in. Depth 23 ¾ in.



**9. HAND WOVEN KARABAGH CARPET**, circa 1920. 14 ft. 4 in. x 3 ft. 10 in.





**10. N. BOWERS “NANTUCKET HOMESTEAD, 1889”**, oil on canvas, painted in the fall with chicken coops and flowering fall low shrubs in foreground; signed and dated lower right \_\_\_N. Bowers, 1889; inscribed on reverse “*Old House Polpis, Nantucket Island, Mass. Built in 1704, \$15.00*”. 10 in. x 14 in.

**11. COFFIN SCHOOL OPEN SWING HANDLE NANTUCKET BASKET**, circa 1910-1920, unique woven palm fiber, wood ear stave continues into the base plate. Height 4 ¼ in. Diameter 6 ¼ in.



**12. SHERWIN BOYER (1907-1964) NANTUCKET BASKET**, original label on base “*I was made on Nantucket Island, I am strong and stout, Don’t lose or burn me, I’ll never wear out, Made by S.P. Boyer*”, with cloth drawstring insert. Height 2 ½ in. Diameter 7 ¼ in.



**13. WILLIAM FERDINAND MACY (NEW YORK 1852-1901) “SHIPWRECK ON NANTUCKET’S SOUTH SHORE”**, oil on canvas, sandy dunes and shipwreck in the distance, signed lower left W. Ferdinand Macy ’90. 13 in. x 35 ¼ in.



**14. ENGLISH BRASS COVERED TANKARD**, circa 1790, applied scroll handle and removable cover. Height 8 in.

**15. 17<sup>TH</sup> CENTURY DUTCH BELL BASE BRASS CANDLESTICK**, engraved M.K. Height 7 ½ in.

**16. AMERICAN HEPPLEWHITE TIGER MAPLE WORK STAND**, circa 1790, cut corner rectangular top above a single drawer frieze, supported on square tapering legs. Height 27 ¼ in. Width 21 ¼ in. Depth 18 ¾ in.

**17. NANTUCKET DECORATED SIDE CHAIR**, 18<sup>th</sup> Century, shaped crest rail above 7 spindles, flanked by turned stiles, shaped seat supported on turned legs and stretchers. Branded underneath G.B. Seat Height 17 in.



**18. PAIR OF FRENCH BRONZE AND CRYSTAL SWAN CANDLESTICKS,** circa 1840. Height 10 in.

**19. FITZHUGH BLUE AND WHITE SHAPED SERVING DISH,** 19<sup>th</sup> Century. 10  $\frac{3}{4}$  in. x 8  $\frac{3}{4}$  in.

**20. EBONY ACCENTED BURL-WALNUT MINIATURE SIDEBOARD,** circa 1870, the shaped case fitted with six drawers flanked by cabinet doors mounted with brass pulls and resting on a conforming base. Height 16 in. Width 28 in. Depth 9 in.



**21. NANKING BLUE AND WHITE PORCELAIN LEAF DISH,** circa 1820. Length 7  $\frac{1}{2}$  in.

**22. NANKING BLUE AND WHITE PORCELAIN LEAF DISH,** circa 1820. Length 7  $\frac{1}{2}$  in.

**23. FITZHUGH BLUE AND WHITE PORCELAIN LOBED DISH,** early 19<sup>th</sup> Century. 8 in. x 8 in.

**24. PAIR OF FITZHUGH BLUE AND WHITE PORCELAIN LEAF DISHES,** early 19<sup>th</sup> Century. Length 7 in.





**25. QUEEN ANNE MAHOGANY DROP LEAF DINING TABLE**, circa 1760, deep oval leaves, cut apron, block and turned legs and pad feet. Height 28 in. Width 17 in. Length 40 in.

**26. FITZHUGH BLUE AND WHITE DIAMOND FORM PEDESTAL SERVING PLATTER**, circa 1830.

**27. FITZHUGH BLUE AND WHITE ASSEMBLED SET OF SIX TEA CUPS AND SAUCERS**, circa 1830.

**28. SET OF SIX FITZHUGH BLUE AND WHITE COVERED POT DE CREMES**, circa 1830.

**29. PAIR OF FRENCH  
BRONZE BOUILLOTE  
LAMPS**, 19<sup>th</sup> Century, with tole  
shades. Height 25 ½ in.

**30. ENGLISH REGENCY  
MAHOGANY LEATHER  
TOP LIBRARY WRITING  
TABLE**, circa 1830, with  
opposing drawers. Height 28 in.  
Length 36 in. Width 25 ½ in.



**31. HAND WOVEN HERIZ CARPET**, circa 1940. 13 ft. 8 in. x 10 ft.



**32. FRANK SWIFT CHASE (1886-1958) “HIGH SURF, NANTUCKET”**, oil on artist’s board, signed lower left Frank Swift Chase. 12 in. x 16 in.



**33. FRANK SWIFT CHASE (1886-1958) “LOOKING THROUGH THE TREES”**, oil on canvas laid on Masonite, most likely a New Hampshire scene, signed lower left Frank Swift Chase. 19 ½ in. x 23 ½ in.



**34. NEW ENGLAND QUEEN ANNE TIGER MAPLE HIGHBOY**, 18<sup>th</sup> Century, with cabriole legs ending in pad feet, antique engraved brasses. Height 65 in. Width 38 in. Depth 20 in.



**35. HAND WOVEN HERIZ CARPET**, circa 1910. 13 ft. 4 in. x 3 ft.





**36. THOMAS HART BENTON (AMERICAN 1889-1975) “CRADLING WHEAT”,** lithograph, pencil signed lower right Benton. 9 ½ in. x 12 in.



**37. NEW ENGLAND SHERATON TIGER MAPLE TWO DRAWER WORK STAND,** circa 1820, on finely turned legs. Height 28 ¾ in. Width 19 ½ in. Depth 19 ¼ in.

**38. NEW ENGLAND SHERATON TIGER MAPLE ONE DRAWER WORK STAND,** circa 1820, on turned legs. Height 29 in. Width 19 in. Depth 18 ¾ in.



**39. FOUR BENJAMIN RUSSELL (MASSACHUSETTS/RHODE ISLAND 1804-1885) LITHOGRAPH PROOFS, “Abandonment of the Whalers in the Artic Ocean, Sept. 1871”, Plates 1,3,4,5. Old Print Shop label on reverse. 14 in. x 20 in.**



**40. A MOST RARE PEARLWARE COVERED PUNCH BOWL**, circa 1790-1800, celebrating the union of JJ to ABW. Punch bowls of this period were made with covers, most did not survive time together. Height with Cover 10 in. Diameter 12 ¼ in.



**41. SILVER PLATED HUMIDOR BOX**, circa 1870, rectangular box with bead moldings, applied ½ round ring and turnings on five surfaces, ¾ outset corners with finials on turned wafer feet and plated bottom. Height 7 ¾ in. Width 13 ½ in. Depth 9 ½ in.



**42. CARVED PINE POLYCHROME SHIP'S FIGUREHEAD OF SIR FRANCIS COLLIER**, 19<sup>th</sup> Century, older repainted surface with affixed engraved brass plaque "Carved by B. Hellyer for Sir Francis Collier". Height 43 in. Sir Francis Augustus Collier (1786-1849) was a Rear Admiral in the Royal Navy and Commander on East Indies and China Station, he died in Hong Kong.



**43. WALRUS IVORY SHIP MODEL IN CASE**, circa 1870, the hull shaped from a single tusk, the rest of the model is carved, cut and steamed ivory, in a shaped mahogany case with carrying handle, turned corner pillars with finials. Height 15 in. Length 17 ½ in. Width 8 in.





**44. CLARK VOORHEES (1911-1980) RARE CARVED AND PAINTED FULL BODY SPERM WHALE**, impressed signature stamp on base. Length 18 in.



**45. CLARK VOORHEES (CONNECTICUT 1911-1980) CARVED AND PAINTED DOLPHIN PLAQUE**, impressed signature stamp on reverse. Length 18 in.

**46. CLARK VOORHEES (CONNECTICUT 1911-1980) CARVED AND PAINTED BLUE WHALE PLAQUE**, impressed signature stamp on reverse. Length 18 in.

**47. CLARK VOORHEES (CONNECTICUT 1911-1980) CARVED AND PAINTED RIGHT WHALE PLAQUE**, impressed signature stamp on reverse. Length 18 in.



**48. SOLON FRANCIS MONTECELLO BADGER (MASSACHUSETTS 1873-1919) “PORTRAIT OF THE BRIGANTINE USS METEOR PASSING HIGHLAND LIGHT”,** oil on canvas laid on board, signed lower left SFM Badger. 22 in. x 36 in.



**49. FOLK ART ADVERTISING FIGURE OF CAPTAIN AHAB,** a polychrome full body rendering of Ahab holding a harpoon and standing on a platform, advertising Ahab’s Whale Oil Soap. Height 33 in.



**50. ENGLISH OIL ON PANEL “PORTRAIT OF A BRITISH CUTTER”, 19<sup>th</sup> Century,** steam sail ship in the background entering harbor. 21 in. x 32 in.



**51. FOLK ART TRADESMAN’S FIGURE OF A MERCHANT HOLDING A SPYGLASS, 20<sup>th</sup> Century,** the figure dressed in a white shirt, gray trousers, gold vest and red neck-ware, black jacket with brass buttons and a stovepipe hat. Height 39 ¼ in.

**Literature:** Illustrated on the cover and Pg. 190 of Robert W.D. Ball’s “Nautical Antiques”, Schiffer Publishers, 1994.



**52. SIGNED STEUBEN GLASS PEDESTAL BOWL DESIGNED BY GEORGE THOMPSON**, circa 1952, shallow bowl on a hollow pedestal with four applied pane shaped drops, signed in script. Height 6 in. Diameter 13 in.

**53. FRENCH PROVINCIAL OAK MIXING TABLE**, 18<sup>th</sup> Century, bold striated rouge and grey rectangular marble top, one drawer, peg construction. Height 27 ¼ in. Length 36 ½ in. Width 24 ½ in.



**54. TWO ENGLISH PRATTWARE PEACOCK PATTERN PITCHERS AND TEAPOT**, circa 1790. Heights 7 ¾ in., 6 in. and 7 in. respectively.





**55. ROUND SWING HANDLE NANTUCKET BASKET**, late 19<sup>th</sup> Century, cut brass ears, gently shaped handle, signed on the base in calligraphy carving “*Nantucket Aug 26 CHM*”, a monogram signature. Height 5 in. Diameter 10 ¼ in.



**56. JAN MUNRO (20<sup>TH</sup> CENTURY FOLK ARTIST) MIXED MEDIA ON MASONITE “SUMMER VIEW OF NANTUCKET”**, with views of Brant Point and Great Point Lighthouses, oyster and fish shacks, boats, whales and an active waterfront village in the foreground, in gray driftwood frame. 24 in. x 36 in.



**57. FINE 17MM X 19MM WHITE SOUTH SEA BAROQUE PEARL EARRINGS**, set in 18k white gold and set with 120 black diamonds total weight .74 ct and 105 white diamonds total weight .63ct. The clasp mechanism can switch from French clasp to pierced.



**58. VERY FINE WHITE SOUTH SEA PEARL OPERA LENGTH NECKLACE**, comprising 65 fine 12mm – 13mm pearls, 14k yellow gold clasp. Length 32 in.



**59. EMMANUEL MARIS (FRENCH 19<sup>TH</sup> C.) "FRUIT AND FLORAL STILL LIFE"**, oil on canvas depicting roses in a Delft vase alongside strawberries, signed lower right E. Maris, in fine 7" wide 19<sup>th</sup> C. gilt frame with maker's stamp "Emmanuel....Paris" 35 in. x 23 in.





**60. FINE ENGLISH OAK WELSH DRESSER**, circa 1800, multiple cross banded inlaid drawers and cupboard doors, period brass hardware, scalloped lower apron. Height 82 in. Width 78 in. Depth 19 ½ in.  
China illustrated on pages 23 & 24





**61. VICTOR SCHARF (AUSTRIAN 1872-1943) "THE AFTERNOON STUDY",** circa 1910, oil on canvas of young girl reading, mother in the background, signed lower left. 65 in. x 71 in. Overall 71 in. x 57 in.





**62. FINE EARLY ENGLISH SPODE BLUE SEASHELL DECORATED DINNER SERVICE**, circa 1810-1825, fine hand painted blue seashells on white ground with gilded borders and seaweed pattern highlights. The large service comprises:

8 Graduating Platters 16 in. x 12 in. to 10 in. x 7 ½ in.

2 Well and Tree Platters, 20 ½ in. x 16 in. and 18 in. x 14 in.

47 Dinner Plates, 9 in.

11 Bread and Butter Plates, 6 in.

16 Soup Bowls, 9 ½ in.

5 Salad Plates, 8 in.

8 Breakfast Bowls, 7 ½ in.

Square Bowl, 9 ¼ in. x 9 ¼ in.

Rectangular Serving Dish 12 in. x 7 ½ in.

2 Shrimp Dishes 9 ½ in. x 8 in.

2 Round Covered Tureens, 10 in.

Covered Sauce Tureen, 7 in. x 8 in.



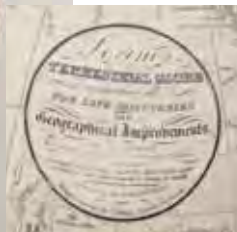


**63. SMITH'S 18 INCH TERRESTRIAL GLOBE**, London C. Smith & Son Limited, "Containing all the Latest Discoveries", on a turned mahogany standard and trifold base. Height 29 in.

**64. CHINESE EXPORT CAMPHOR WOOD MECHANICAL TAMBOUR TRAVELING DESK BOX**, circa 1850, with popup pigeon holes and carved compartment, flip writing surface, full pull out drawers, brass strapped and recessed carrying handles. Height 10 ¾ in. Width 21 in. Depth 17 in.



**65. LORINGS TERRESTRIAL TWELVE INCH TABLE TOP GLOBE**, BOSTON, 1846 with 24 lithographed half-gores, surmounted by printed hour circle and brass hour pointer, within a brass calibrated full meridian, the horizon band with engraved paper calendar and zodiac, raised on a turned maple stand with four legs joined by an x-form stretcher. Signed in cartouche: "Loring's Terrestrial Globe Containing all the Late Discoveries and Geographical Improvements, Revised by Roswell Parks, 1846. Manufactured by Gilman Joslin, Boston."







**66. HAND WOVEN HERIZ CARPET**, circa 1920. 12 ft. x 8 ft.

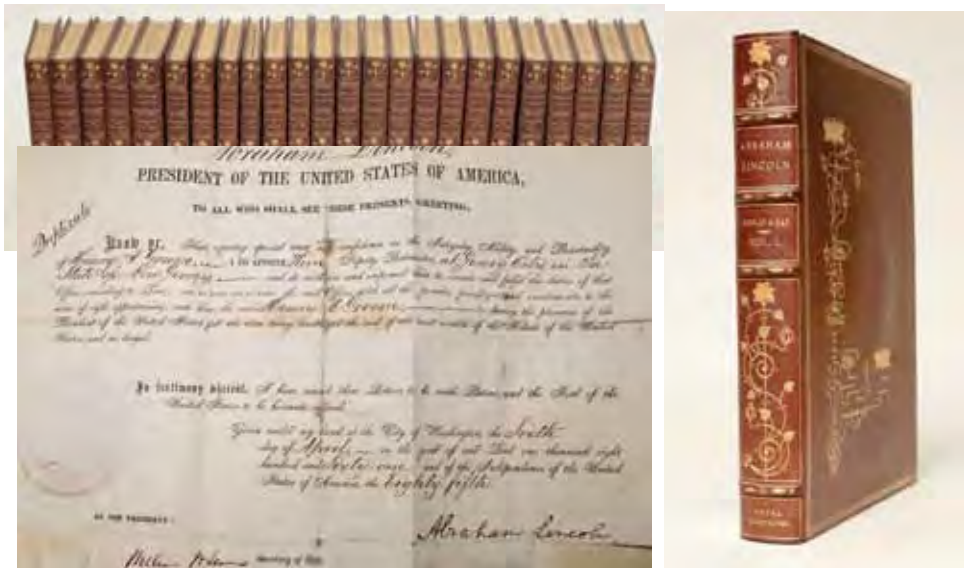


**67. MEMOIRES SUR DIFFERENTES PARTIES DES SCIENCES ET ARTS**, Volume 1, by M. Guettard de l'Académie Royale des Sciences. 1768, avec Approbation et Privilège du Roi, Paris: Laurent Prault, Libraire, au coin de la rue Git-le-Cœur, à la Source des Sciences.



**68. AMERICAN POLYCHROME CAST IRON DOORSTOP**, an oversized colonial woman in hoop dress. Height 11 ½ in.

**69. NANTUCKET DIMINUTIVE OVAL SWING HANDLE BASKET**, circa 1900, slight flare to top rim, shaped handle attached with tin cut ears. Height 4 in. Length 7 ¾ in. Width 5 ¼ in.



**70. THE COMPLETE WORKS OF ABRAHAM LINCOLN** (24 Vols.), eds. John G. Nicolay & John Hay, copyright 1894. New York: Francis D. Tandy Company, New and Enlarged Gettysburg Edition, copyright 1905. The last volume contains autographs and letters of Abraham Lincoln and prominent men of his time, with numerous rare portraits and other illustrations. Volume 14 contains signed copy of Emancipation Proclamation. Very minor foxing at beginning and end pages in some volumes. Overall great condition. Contains original green cover. Rebound with leather cover and spine and gilt tooling in art nouveau designs of lilies and flowers with similar design on spine.



**71. THOMAS WILLIS (1850-1925) “AMERICAN STEAM SAIL YACHT VERGANA”**, silk embroidery on painted canvas, depicting the *Vergana* flying the New York Yacht Club burgee and passing a headland. 17 ½ in. x 25 ½ in.



**72. THOMAS WILLIS (1850-1925) “SINKING OF THE SS SUSSEX BY GERMAN U-BOAT”**, silk embroidery on painted canvas, depicts the *Sussex*, rescue ship, lifeboats and U-Boat in distance during World War I, initialed TW lower right. 13 ½ in. x 23 ½ in.





**73. BONE STAVED BASKET/WASH BASIN, 19<sup>th</sup> Century, heart carved handles, bound with four baleen bands.**



**74. WOOD, IVORY AND BONE SHIP "LION" A 3-MAST MAN-O-WAR, circa 1870, pine carved hull with ivory pinned planking and decking, bone rails, masts, yard arms, figurehead, 28 wood turned guns on 2 decks, fitted to an inlaid rectangular wood base. Height 14  $\frac{3}{4}$  in. Length 16 in. Width 6  $\frac{1}{2}$  in.**



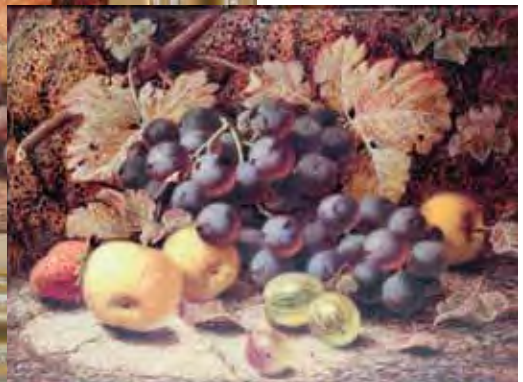


**75. SAILOR MADE INLAID AND SCRIMSHAWED PANBONE DITTY BOX,** circa 1840, oval form with tropical woods inlaid top with conforming engraved panbone band of squares within line borders. The engraved panbone body depicts a brig under sail, expansive cathedral, Greek style structure with trees and a church. Height 5 ½ in. x 9 ½ in. x 7 ¼ in.





**76. OLIVER CLARE (BRITISH 1853-1927) “STILL LIFE WITH BIRD’S NEST”,** oil on canvas, signed and dated lower right Oliver Clare, '96. 9 ½ in. x 7 ½ in.



**77. OLIVER CLARE (BRITISH 1853-1927) “FRUIT STILL LIFE WITH GRAPES”,** 19<sup>th</sup> Century, oil on canvas, signed lower right in period frame. 9 in. x 12 in.



**78. VINCENT CLARE (BRITISH 1855-1930) “STILL LIFE WITH ROBIN’S EGG NEST”**, 19<sup>th</sup> Century, oil on board, signed lower right Vincent Clare, in period gilt frame. 7 ½ in. x 10 in.



**79. VINCENT CLARE (BRITISH 1855-1930) “FRUIT STILL LIFE”**, 19<sup>th</sup> Century, oil on canvas, signed lower right Vincent Clare and inscribed on reverse of canvas “Vincent Clare”. 7 in. x 9 in.





**80. FRENCH PROVINCIAL TRIPLE BACK SETTEE**, circa 1800, each back with carved shaped crest rail with draping tied bow, oval rosette flanked by columns, swooping armrest with leaf hand grip, slip seat supported by tapering square fluted legs. Height 37 ½ in. Length 61 in.



**81. RARE GEORGIAN "VOYEUSE" CHAIR**, circa 1800, the tufted leather back accented with brass nail head trim, continuing to the bow front seat terminating at the horizontal padded rest and rising on out-swept faux bamboo turned legs. Provenance: Estate of Richard Mellon Scaife Height 31 ½ in. Length 32 in. Width 19 in.



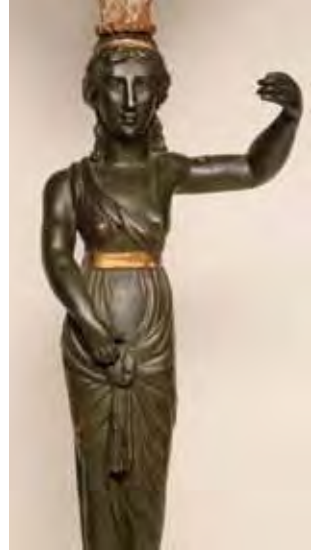


**82. ENGLISH REGENCY TORTOISE SHELL AND STERLING DOUBLE COMPARTMENT TEA CADDY**, circa 1825, exquisite shaped and paneled box with hinged lid and applied with 21 engraved and cut sterling silver mounts. Silver line inlay demarcate the tortoise panels, Hallmarked Cy & Co. Height 6 in. Width 7 in. Depth 4 ½ in.



**83. TORTOISE SHELL DOUBLE COMPARTMENT TEA CADDY**, 19<sup>th</sup> Century, silver line inlay, fitted interior lids with turned bone finials, mother of pearl escutcheon, turned bone feet and trim. 6 in. x 6 ½ in. x 4 in.

**84. TORTOISE SHELL SARCOPHAGUS FORM DOUBLE COMPARTMENT TEA CADDY**, 19<sup>th</sup> Century, fitted interior lids with carved finials, ivory trim and inlay, brass line inlay and escutcheon, turned bone feet. 6 in. x 7 ½ in. x 5 ¼ in.



**85. PAIR OF CARVED AND GILT NEOCLASSICAL FEMALE FIGURES**, circa 1880, each figure in a gilt waist-banded long dress pulled up in front, pulled back hair and drop braids, gilt woven baskets on their heads, standing barefoot on decorated square plinths. Height 57 ½ in.



**86. GEM QUALITY WHITE SOUTH SEA PEARL NECKLACE**, comprising 29 fine 13.1mm -15.9mm white pearls, 14k yellow gold clasp. Length 16 in.



**87. ELABORATE MULTI-WOOD INLAID LAP DESK**, 19<sup>th</sup> Century, inlaid with ebony, cherry and mahogany with bird's eye maple panels.  
Height 6 ½ in. Width 17 ½ in. Depth 10 ½ in.



**88. PAIR OF SIGNED JOHN MOLINEUX, BOSTON BRASS BALL TOP ANDIRONS**, circa 1820, standing on terraced base and turned body with matching log stops. Height 14 in.



**89. JAMES HARRISON LONDON  
REPEATER BRACKET CLOCK, 18<sup>th</sup> Century,**  
mahogany case with brass scrolls on face and door,  
brass carrying handle, pineapple finials, ogee bracket  
feet, glazed rear door displays a finely engraved  
plate. Height 19 ½ in. Width 11 in. Depth 7 ¼ in.





**90. DEVEREUX BOWLY, LONDON BRACKET CLOCK**, 18<sup>th</sup> Century, chiming and repeating clock in an ebonized case with brass mounts, backplate finely engraved. Note: G H Ballie lists Devereaux Bowley (Bowly) as master of repute, Britain's Old Clocks and Their Makers 9th Edition notes Bowly (Bowley) Devereaux as master 1759. He is also listed at 54 Lombard Street, born in 1696, died 1773 apprenticed to William Tomlinson Height 19 ½ in. Width 12 ½ in. Depth 7 ¾ in.



**91. HAND WOVEN SERAPI CARPET**, circa 1920. 11 ft. 3 in. x 9 ft. 4 in.



**92. PAIR OF ROSE MANDARIN VASES**, circa 1830, unusual bird applied handles at neck and gilt lizards, two panels of garden gatherings, butterflies and foliage throughout. Height 9 in.



**93. CHINESE EXPORT ROSE MANDARIN TEAPOT**, circa 1790, dragon form handle.

**94. CHINESE EXPORT SHALLOW BOWL AND DISH**, circa 1830, figures in an exterior, the bowl with a broad dragon border, the dish with flower and butterflies on a gilt band. Diameter Bowl 9  $\frac{3}{4}$  in. Dish 7  $\frac{3}{4}$  in.



**95. CONTEMPORARY MARBLE TOP CENTER TABLE**, with unusual round

black and white fossil top on a conforming burl wood frieze, supported on four columns rising from a circular shelf on four paw feet. Height 30  $\frac{1}{2}$  in. Diameter 43 in.





**96. CHINESE EXPORT FAMILLE VERTE PUNCH BOWL**, circa 1850, pictorial medallions of garden settings, gilt border of flowers, birds and butterflies on teakwood base. Height 6 in. Diameter 14 ½ in.

**97. QUEEN ANNE MAHOGANY TEA TABLE**, 18<sup>th</sup> Century, rectangular dish top on shaped skirt supported on cabriole legs, shell and bell flower knees ending in trifid feet. Height 27 ¾ in. Width 31 in. Depth 21 ½ in.





**98. DIMINUTIVE NEWPORT, RHODE ISLAND FLAT-TOPPED SLIPPER-FOOTED HIGHBOY, JOHN OR CHRISTOPHER TOWNSEND**, circa 1740-60, plum pudding mahogany with line inlaid drawer fronts, slipper feet. Upper hardware replaced, waist and crown molding restored. Descended through the Demarest family, Bergen County New Jersey. Height 70 ½ in. Width 39 ¾ in. Depth 21 ½ in.



**99. AMERICAN OIL ON CANVAS “PORTRAIT OF A YOUNG LADY”**, attributed to Joseph Whiting Stock (Massachusetts 1815-1855) young lady seated wearing sun bonnet and holding a floral bouquet on a New York stenciled canvas, lined. 46 in. x 34 in.



**100. FEDERAL MAHOGANY SERPENTINE FRONT GAMES TABLE**, Massachusetts, circa 1800, a fine and most graceful form with an oval flame birch central panel with a cross banded, mitred mahogany panel, flanked by flame birch veneer in continuity on front, turrets and sides. Fine tapered reeded legs with ringed terminals. Height 29 ½ in. Width 38 ½ in. Depth 18 ¼ in.



**101. NEW ENGLAND QUEEN ANNE TIGER MAPLE HIGHBOY**, 18<sup>th</sup> Century, cabriole legs on pad feet, antique brasses. Height 62 in. Width 38 in. Depth 18 ¾ in.

**102. SHAKER SPLINT WOVEN RECTANGULAR WORK BASKET**, 19<sup>th</sup> Century. Height 14 in. Diameter 25 in.



**103. HAND WOVEN SARAB CARPET**, circa 1920. 13 ft. 4 in. x 2 ft. 10 in.



**104. CHINESE EXPORT FITZHUGH PATTERN BLUE AND WHITE COVERED SAUCE TUREEN AND UNDERPLATE.** Width 8 in.

**105. CHINESE EXPORT PORCELAIN FITZHUGH PATTERN BLUE AND WHITE COVERED VEGETABLE DISH.** Width 9 in.

**106. CHINESE EXPORT PORCELAIN FITZHUGH PATTERN BLUE AND WHITE CUT CORNER BOWL.** Height 4 ½ in. Diameter 9 ½ in.

**107. MASSACHUSETTS SHERATON MAHOGANY DROP LEAF TABLE,** circa 1820, unusual concave skirt on original brass casters. Height 29 in. Length 36 in. Width 22 in.



**108. ENGLISH CAPTAIN'S DECANTER BOX,** circa 1840, brass strapped mahogany box with carrying handles, name plate and escutcheon. The interior fitted with four crystal decanters with pouring spouts and stoppers, single pedestal glass in fitted cover. Height 8 ½ in. Width 8 ½ in. Depth 8 ½ in.





**109. CHINESE EXPORT BLUE AND WHITE NANKING PORCELAIN VASE,** 19<sup>th</sup> Century, converted to a lamp. Height 15 ½ in.

**110. CARVED, GILDED AND DECORATED EAGLE IN FLIGHT,** 19<sup>th</sup> Century. Wing Span 33 in.

**111. CANTON BLUE AND WHITE CHESTNUT BASKET AND RETICULATED UNDER PLATE,** 19<sup>th</sup> Century. Basket: 3 ½ in. x 9 ¼ in. x 8 in.

**112. CHINESE EXPORT CAMPHORWOOD PARTNER'S CAMPAIGN TRUNK,** 19<sup>th</sup> Century. Height 19 ½ in. Length 39 ½ in. Depth 19 ½ in.

**113. PAIR OF ENGLISH BRASS TAVERN CANDLESTICKS WITH DRIP PANS AND BELLS,** 18<sup>th</sup> Century. Height 13 in.

**114. CHINESE EXPORT BLUE AND WHITE FITZHUGH MEAT PLATTER,** 19<sup>th</sup> Century. 19 in. x 16 in.

**115. ENGLISH MAHOGANY BRASS BOUND CAMPAIGN CHEST OF DRAWERS,** 19<sup>th</sup> Century, in two parts. Height 37 in. Width 36 in. Depth 19 ½ in.

**116. PAIR OF BRASS ANCHOR AND IRONS,** Mid-century, with matching log stops. Height 19 in.



**117. CARVED WHITE OAK FRENCH BRIDAL ARMOIRE**, circa 1870, 4 inch step back removable overhanging crown molding carved with leaves and ribbon above love birds on a cup feasting on a grape cluster with crown arch flanked by floral scrolls. Each door carved with floral bouquets and cornucopia of grapes, the central panel with circular gardening motifs, the base panel with flowers and leaves. The apron carved in a fabric swag with scrolled leaves, four interior shelves. The case stiles carved with leaves and beads ending in short cabriole legs. Height 8 ft. 3 in. Width 58 in. Depth 22 ½ in. Crown Depth 26 ½ in.



**118. SAILOR MADE PANBONE SWING HANDLE BASKET**, mid-19<sup>th</sup> Century, pine oval bottom wrapped with a single piece of panbone, carved with interlocking circles and dot arched rim, the swing bone handle carved in diamonds, circles and dots attached by rivets. The handle is scrimshawed with initials “D.M.P.”  
Height 2 ½ in. x 8 in. x 5 ¼ in.



**119. FRENCH BRASS AND IRON MARBLE TOP BAKER'S TABLE**, 19<sup>th</sup> Century, stamped J. MARESCAL, PARIS. Height 30 in. Width 53 in. Depth 37 in.

**120. PAIR OF FRENCH BRONZE BOUILLOTTE LAMPS**, 19<sup>th</sup> Century, three branches on a deep engraved pan, green tole shades. Height 11 in.



**121. HAND WOVEN SERAPI CARPET**, circa 1910. 11 ft. x 10 ft.



**122. REGENCY MAHOGANY CENTER TABLE**, circa 1820, rectangular top with rounded corners on  $\frac{1}{4}$  mirror mahogany veneered panels, overhanging top above two opposing drawers on a six-sided standard rising from a plinth with four carved and gilt polychromed dolphins and ending in brass paw feet. Height 29 in. Width 46 in. Depth  $29\frac{1}{4}$  in.





**123. DORIS RIKER BEER (1898-1967) WATERCOLOR “MAIN STREET”**, depicting upper Main Street, titled under the mat. 13 ½ in. x 10 ½ in.



**124. DORIS RIKER BEER (1898-1967) WATERCOLOR “WEST BRICK AND 99 MAIN”**, depicting upper Main Street with a view of West Brick and 99 Main St. from Pleasant St., titled under the mat. 13 ½ in. x 10 ½ in.



**125. J. EVANS “TWO CHILDREN AND A GENTLEMAN”,** 19<sup>th</sup> Century, pen and ink on paper laid on board. 12 ½ in. x 14 ½ in. An excellent example of the more formalized style Evans employed in later watercolors, as documented in the definitive biography of the watercolor artist J. Evans by Gail and Norbert H. Savage as it appears in the catalog from the museum exhibition catalog *Three New England Water Color Painters* (pub. 1974). This example is likely related to the exhibited watercolors listed as plate no. 13, 15, 17 and 18 in the catalog.



**126. PAIR OF REGENCY ORMOLU AND CUT GLASS FIGURAL CANDLESTICKS,** early 19<sup>th</sup> Century, each having a single light above cut glass drops continuing to the base with greyhounds rising on a graduated base. Height 11 ½ in.

**127. PAIR OF CHINESE EXPORT OIL ON CANVAS “JUNK & SAILING VESSEL”,** 19<sup>th</sup> Century. 6 in. x 7 ½ in.



**128. GILT CONVEX GIRONDALE MIRROR**, 19<sup>th</sup> Century, carved flame on rock pediment flanked by a pair of dolphins, 26 spherules surround the reeded ebony trim, six candle sockets, continuing to a leaf drop pediment.  
36 in. x 27 in.



**129. ITALIAN HAND DECORATED COMMODOE**, 18<sup>th</sup> Century, wheel decorated panels on top, sides and drawer fronts, ring pulls, iron spring drawer locks.  
Height 37 in. Width 47 in. Depth 22 ½ in.



**130. PAIR OF OIL ON ARTIST BOARDS OF GROUSE HUNTING “THE SHOT” AND “FLUSHED THE NEST”, artist unknown, in gilt frames.**  
8 ½ in. x 11 in. and 9 in. x 12 in. respectively



**131. PAIR OF HEROIC PENNSYLVANIA BRASS MULTI-TURNED ANDIRONS**, circa 1830, scrolled legs on ball feet. Height 24 in.

**132. ASSEMBLED SET OF THREE BRASS AND STEEL MULTI-TURNED AND FACETED FIREPLACE TOOL SET**, circa 1840.

**133. BRASS AND IRON ENGLISH RAIL AND WIRE FIREPLACE FENDER**, 19<sup>th</sup> Century, with curtain swag decoration and ball feet. 18 in. x 36 in.





**134. AMERICAN WATERCOLOR “GATHERING ON THE LAWN”**, 19<sup>th</sup> Century, in the school of George Inness (American, 1825-1894), unsigned. Found in a home in Montclair, New Jersey. 12 in. x 20 ½ in.



**135. GEORGE III INLAID MAHOGANY CELLARETTE**, circa 1820, tapered case form, flanked with brass handles and rising on outswept legs. Height 29 ½ in. Width 17 in. Depth 17 in. Provenance: Estate of Richard Mellon Scaife

**136. SIX PIECES OF ENGLISH BLUE AND WHITE ROYAL WORCESTER PORCELAIN**, 18<sup>th</sup> Century, comprising saucer, covered bowl, two rice bowls and cup and saucer, crescent moon under glaze.

**137. REGENCY MAHOGANY PETITE CABINET**, circa 1820, having a triangular arched pediment above a tiered superstructure with turned supports, continuing to the case with two doors. Height 30 ½ in. Width 19 ½ in. Depth 9 ½ in. **Provenance:** Estate of Richard Mellon Scaife.

**138. WILLIAM APPLETON (1851-1918)**  
**ROUND OPEN SWING HANDLE**  
**BASKET**, circa 1910.  
Height 5 ½ in. Diameter 13 in.

**139. AMERICAN SHERATON BIRD'S**  
**EYE MAPLE AND MAHOGANY ONE**  
**DRAWER STAND**, circa 1820, brass  
repousse pulls, acorn feet, shaped top.  
Height 28 in. Width 18 in. Depth 16 in.



**140. ENGLISH MAHOGANY TALL CASE CLOCK**, circa 1840, goose neck  
pediment with three brass ball finials, turned columns flanking a decorated dial with four  
British Man-o-War and a wounded Admiral Nelson on deck. Domed waist door flanked  
by ½ columns and rosettes, recessed panel base on French bracket feet. Height 88 ½ in.



**141. PAIR OF FINE ENGLISH BRASS TAVERN CANDLESTICKS**, circa 1840, with brass bells. Height 12 ½ in.

**142. NANTUCKET PINE TAVERN TABLE**, 18<sup>th</sup> Century, round pine top on a pegged cherry base with turned legs with old tag “Kitchen in the Old Nickerson House, Nantucket Island”. Height 25 in. Diameter 28 in.



**143. SET OF SIX PENNSYLVANIA DECORATED DINING CHAIRS**, circa 1825, hand painted yellow and gilt fruit and leaves on a green ground with black accents.



**144. PAIR OF CHINESE EXPORT CARVED TEAK WOOD SIDE CHAIRS**, circa 1820-1830, fine and deeply carved vines throughout. Seat Height 17 in.



**145. CHINESE EXPORT CHINOISERIE SEWING TABLE**, circa 1830, top depicts a battle scene, interior depicts a peaceful garden scene, fitted interior compartments and pullout scrap basket. Height 28 ½ in. Width 24 ½ in. Depth 16 ½ in.

**146. CHINESE FAMILLE VERTE COVERED VASE**, circa 1850, applied gilt ringed lion heads. Height 26 in.

**147. CHINESE EXPORT CARVED FRAMED MIRROR**, circa 1830-1850, gilt accents and original cast bronze hanger. 44 in. x 31 in.





**148. SET OF THREE CHINESE EXPORT FLORAL WATERCOLORS,** circa 1830, framed in contemporary burl and gilt wood frames with watercolor marbled mats. 8 in. x 10 in.



**149. RARE CANTON FAMILLE ROSE BOUGH POT,** early 19th Century, removable pierced top twisted gilt rope handles with vines of berry buds throughout, with birds and butterflies and two interior panel scenes with six figures. Height 9 in. 8 ½ in. Square



150. WENDELL MACY (NANTUCKET 1845-1913) "BRANT POINT", oil on panel, signed lower right. 11 ¼ in. x 20 in.



**151. WENDELL MACY (NANTUCKET 1845-1913) “Old Mill – Nantucket Mass, Built in 1746”**, oil on door panel, titled and signed on the edge of the panel. 8 ½ in. x 7 in.



**152. WENDELL MACY (NANTUCKET 1845-1913) “Old Mill”**, oil on wood, an unusual elevation perspective of the mill with no sails, in a broad wood frame with gilt liner, signed lower right. 6 in. x 5 in.



**153. COLLECTION OF 13 CHINESE MINIATURE TEAPOTS**, circa 1830-1850, 1 Imari, 1 Satsuma, 2 Mandarin, 9 Rose Medallion. From 2 in. to 4 in.

**154. GEORGE III MAHOGANY MINIATURE THREE TIER DUMBWAITER**, circa 1780's, three graduating round tiers on a tripod base. Height 23 in.

**Provenance:** Estate of Richard Mellon Scaife



**155. CHINESE EXPORT BLACK LACQUER AND GILT TEA CADDY**, circa 1830, rectangular shaped panel box on carved gilt wood winged dragon feet. The interior fitted with an engraved double door pewter box. 5 in. x 9 in. x 7 in.

**156. UNUSUAL FRENCH MICRO-MOSAIC STRAW SWING HANDLE COVERED BASKET**, early 19<sup>th</sup> Century, swing handle attached with polychromed metal lion's heads on an oval tapering basket with removable and locking top, the exterior is covered with straw parquetry designs. Height 7 ¾ in. x 8 in. x 5 ½ in.





**157. HAND WOVEN HERIZ CARPET**, circa 1920. 9 ft. 7 in. x 13 ft. 10 in.



**158. IVORY HANDLE CARVING KNIFE AND FORK**, 19<sup>th</sup> Century, depicts a hand carved head of Washington and the fork with carved head of Lafayette, knife blade reads “*Moss & Gamblers Franklin Works, Sheffield*”, original case and letter accompany this lot.



**159. HAND WOVEN BAKTIARY CARPET**, circa 1930. 13 ft. 7 in. x 3 ft. 9 in.



**160. PAIR OF SHEFFIELD PLATE WINE COOLERS**, circa 1820-1840, scroll and gadroon decorated rim design repeated on the pedestal base, applied handles on a melon form body, engraved with coat of arms “*Jamais Arbiere*”. Height 9 in.



**161. DANISH STERLING SILVER FLATWARE SERVICE BY FRIGAST IN THE “PRINCESS FUCHSIA” PATTERN**, 12 dinner knives, 12 dinner forks, 12 salad forks, 23 teaspoons, 12 tablespoons, 12 ice tea spoons, 12 all sterling butter knives, 2 serving spoons, sugar spoon, 2 piece carving set, flat server, condiment spoon, olive fork, pickle fork, master butter. This pattern by Frigast compares to blossom by Georg Jensen.



**162. SALESMAN'S SAMPLE LACQUERED TRAY ON STAND**, circa 1880.  
Height 12 in. Length 10 in. Width 7 ½ in.

**163. PASTEL PORTRAIT OF A GENTLEMAN ON PARCHMENT**, circa 1816,  
signed and dated mid-right "A.H.R. (or C.H.R.) Beck, 1816 in original period gilt frame.  
11 in. x 8 ½ in.

**164. ENGLISH TORTOISE SHELL TEA CADDY**, circa 1800, rectangular form  
with raised hinged top and silver line inlay exposing two covered compartments.  
4 ½ in. x 6 ½ in. x 3 ½ in.



**165. PAIR OF ANGLO INDIAN SOLID EBONY SIDE CHAIRS**, circa 1850,  
carved cornucopia crest rails and reeded legs. Height 32 in. Seat Height 17 ½ in.



**166. SET OF SIX REGENCY DINING CHAIRS**, circa 1830, faux rosewood finish, turned and rope carved crest rail with brass straps, stylized shell and scrolls, slip seats on saber legs.



**167. ANTONIO DE SIMONE (ITALIAN 1851-1907) “STEAM SAIL YACHT Y. GRACE DARLING IN ROUGH SEAS”**, gouache on paper, titled lower left Y. Grace Darling in lemon gilt frame 18 in. x 24 in.





**168. CANTON BLUE AND WHITE HOT WATER DISH**, circa 1850.  
Length 11 ½ in.

**169. FITZHUGH BLUE AND WHITE COVERED TUREEN AND UNDER PLATE**, circa 1830. Tureen Height 10 ½ in. Length 13 ½ in.  
Platter 15 ¾ in. x 13 ¼ in.

**170. FITZHUGH HOT WATER PLATE**, circa 1830. Length 11 ¼ in.

**171. MAHOGANY INLAID KNIFE BOX**, 18<sup>th</sup> Century, star inlaid cover converted to a letter box. Height 13 ¼ in. x 9 in. x 10 in.

**172. MAHOGANY SHAPED KNIFE BOX**, 18<sup>th</sup> Century, edge inlays and fitted interior. Height 13 ¼ in. x 9 in. x 10 in.

**173. AMERICAN HEPPLEWHITE INLAID SIDEBOARD**, circa 1800, serpentine form, central decanter drawer flanked by cupboard doors.  
Height 41 in. Length 66 in. Depth 25 in.

**174. PAIR OF REGENCY UPHOLSTERED FOOT STOOLS**, circa 1800, rosewood frames on turned feet, shaped sides and conforming upholstery.  
Height 5 ½ in. x 14 in. x 14 in.



**175. NEST OF THREE NANTUCKET ROUND OPEN SWING HANDLE BASKETS**, late 19<sup>th</sup> Century, made aboard the South Shoal Lightship, cherry bottoms with wide concentric circles, inner brass ear construction technique. Heights 7 in., 6 in., 5 ½ in. Diameters 11 in., 9 ½ in., 8 in.



**176. JAMES WALTER FOLGER (MASSACHUSETTS 1851-1918) "SCONSET" CARVED WOOD PLAQUE**, Turn of the Century, titled lower left, signed lower right J.W. Folger with original label on reverse "*James W. Folger Artistic Wood Carvings, Paintings of Nantucket – Scenery*". 11 in. x 16 in.



**177. RARE NANTUCKET COMPOTE BASKET ATTRIBUTED TO CAPT. THOMAS JAMES (1811-1885)**, the interior with three deep concentric circles and 6 scribe lines mounted on a smaller reversed shallow basket, base rim was never wrapped. This is the third compote basket known. Height 5 in. Diameter 9 ½ in.



**178. JAMES WALTER FOLGER (MASSACHUSETTS 1851-1918) CARVED AND PAINTED POLYCHROME PLAQUE “THE OLDEST HOUSE, NANTUCKET, 1672”** with original label on reverse “*James W. Folger Artistic Wood Carvings, Paintings of Nantucket Scenery*”, Nantucket, Mass.” 6 ¾ in. x 10 in.



**179. ORMOLU MOUNTED ROSE MEDALLION BOWL FOR THE BOSTON MARKET**, mid 19<sup>th</sup> Century. Height 12 ½ in. Diameter 12 in.

**180. AMERICAN FEDERAL MAHOGANY CARD TABLE**, early 19<sup>th</sup> Century, shaped line inlay, ¾ cut cookie corner top on turned and reeded legs. Height 28 ¾ in. Width 33 ½ in. Depth 17 in.

**181. PAIR OF ENGLISH BRASS MILITARY FIGURAL ANDIRONS**, with shield log stops. Height 22 ½ in.







**182. PAIR OF ENGLISH BRASS TAVERN CANDLESTICKS**, late 19<sup>th</sup> Century, turned dish base. Height 11 ½ in.

**183. TWO CHINESE IMARI DISHES**, 18<sup>th</sup> Century. Diameter 9 in.

**184. ENGLISH BRASS TAVERN CANDLESTICK**, late 19<sup>th</sup> Century. Height 11 ½ in.

**185. PAIR OF ENGLISH BRASS TAVERN CANDLESTICKS**, 19<sup>th</sup> Century. Height 11 ½ in.

**186. AMERICAN MARLBOROUGH GAMES TABLE**, circa 1800. Height 28 ½ in. Width 35 ¾ in. Depth 17 ¾ in.



**187. PAIR OF VINTAGE BRASS CAT AND DOG ANDIRONS**. Height 9 ½ in.



**188. TIM THOMPSON (ENGLISH B.1951) ‘NAVAHOE, DARTMOUTH REGATTA, 1893’**, oil on canvas, signed lower right. Thompson spent his childhood living on the tiny Channel Island of Herm and that is where he developed a love and respect for the sea. He created his first watercolor of the ship Queen Mary at the tender age of 6. In 1982 he met Ted Turner at a regatta in Cowes, England and Turner commissioned him to paint numerous sailing boats which brought him growing popularity and recognition. Thompson has exhibited his work in the United States, London, Paris, Italy, Belgium, Germany, Switzerland, the Vasa Museum in Sweden, Monaco, Brazil, Australia and New Zealand. 20 in. x 40 in.



*To Sail into Nantucket  
Harbor, and carry the best water over  
the bar in which is a fort, bring the Light house  
to bear S. S. E. then run for it, giving Brent Point  
a berth and haul in. The Buoy on the East  
Flat is seen in day time.*

**189. 1781 HAND COLORED  
MAP OF NANTUCKET BY**

**I.F.W. DES BARRES**, published by an act of Parliament in 1781 from the folio “*Atlantic Neptune*”, fine condition and colored at the time of printing. 29 ½ in. x 42 in.



**190. NEST OF THREE CHINESE EXPORT LACQUER SIDE TABLES**, circa 1830, gilt decorations depicting Emperor & Empress holding court, theatrical scene and garden setting. Turned legs ending in scrolls coming out of a gilt dragon's mouth.



**191. ROSE MANDARIN TEAPOT**, circa 1840, the body surrounded by figures socializing around furniture. Height 7 in. Width 10 in.

**192. ROSE MANDARIN SHRIMP DISH**, circa 1830, two lion coat-of-arms and dragon borders.

**193. FINE ROSE MANDARIN HOG NOSE CREAMER**, circa 1830, the entire body tightly decorated with vase, box, apple blossoms, fan, coins, bat, frog, scrolls, bell, arrows and flowers on a gold ground. Height 4 in.





**194. CHINESE EXPORT WATERCOLOR AND LACQUERED FAN,** circa 1830-1850, black lacquer frame with gilt courtyard scene with figures on sticks, the paper fan watercolor of an exquisite floral bouquet with birds and butterfly encompassed in colorful borders, the reverse depicts Macao, Canton and Hong Kong. 14 in.





**195. SAILOR MADE NANTUCKET PIERCED PANBONE OVAL COVERED BOX**, mid-19<sup>th</sup> Century, mahogany top with an interlocking circle panbone band on a conforming box of a single piece of bone having arches, diamonds, triangles, half rounds, spikes and interlocking circles. Note: the base was never riveted to the box as is with all the other baskets and boxes of this style. The elaborate carved rim, which is concealed when covered, leads us to believe this was designed for multi-purpose use. Height 4 ½ in. x 10 ¼ in. x 7 in.



**196. SAILOR MADE PANBONE OVAL BASKET**, mid-19<sup>th</sup> Century, pine bottom wrapped with a single piece of panbone, carved with two rows of interlocking circles and a scalloped rim and a stationary handle. Height 3 in. x 6 ¾ in. x 5 ¼ in.



**197. RARE SCRIMSHAW PANBONE AND MAHOGANY SWING HANDLE BONNET BOX**, mid-19<sup>th</sup> Century, round form made of a single piece of bone joined by riveted long laps with lollipop ends. The band top and base secured to the wood with bone pegs, the handle is attached with turned knobs.  
Height 7  $\frac{3}{4}$  in. Diameter 9  $\frac{1}{2}$  in.

**Provenance:** Barbara Johnson Collection, Sold Rafael Osona Auctions August 13, 1994.  
Illustrated: E Norman Flayderman's Scrimshaw and Scrimshanders – Whales and Whalemen, Published 1972, pg. 228.



**198. SAILOR MADE PANBONE DITTY BOX**, circa 1850, oval form with mahogany top and base, the box and lid trim from a single piece of panbone with 8  $\frac{1}{2}$  finger laps. The top with a turned knob on a bone inlaid star.  
Height 6 in. x 8  $\frac{1}{2}$  in. x 6  $\frac{1}{4}$  in.

**199. SAILOR MADE PANBONE OVAL DITTY BOX**, circa 1850, wood top and bottom, both wrapped with a single piece of panbone and joined by 8 long laps ending in lollipops. Height 5 in. x 9 in. x 6.75 in.



200. **RALPH EUGENE CAHOON JR. (1910-1982) "NANTUCKET FISH CO."**, oil on Masonite, depicting a sailor boy with four mermaids and their bounty of fish, signed lower right R. Cahoon. 17 ½ in. x 23 in.





201. **RALPH EUGENE CAHOON JR. (1910-1982) "MERMAID INN"**, oil on Masonite depicting sailors from the ship "Hero" dancing on the boardwalk with approaching sailor and mermaid, patrons drink ale at the Mermaid Inn, a ship approaching headland in the distance. In custom frame by Eli Wilner & Co. New York, signed lower right. 25 ½ in. x 38 in.



**202. RALPH EUGENE CAHOON, JR. (1910-1982)**  
**“BATTLE OF THE HOT AIR BALLOONS” DECORATED**  
**COCKTAIL TABLE**, hand painted round top depicting  
 seven balloons surrounding a faux marble insert on a fluted pedestal base.  
 Height 19 ½ in. Diameter 42 in.



**203. RALPH EUGENE CAHOON (1910-1982) “MERMAID SAILING”**, oil on  
 Masonite, signed lower right R. Cahoon, in period Chinese Export frame. 12 in. x 14 in.



**204. JULIO LARRAZ (CUBAN B. 1944), “HEVAME CONTIGO (TAKE ME WITH YOU)”**, gouache on paper, depicts six seated figures in a rowboat against black background, signed lower right. 14 ½ in. x 23 in.

Born in Cuba, Larraz moved to Miami as a child and later to New York City where he became known for his mastery of realism in painting, printmaking and sculpting. His various awards over the years include that of the prestigious Acquisition Prize, Childs Hassam Fund Purchase Exhibition from the Institute of Arts & Letters in New York. Provenance: Peter Findley Gallery.



**205. SAILOR MADE BALEEN, WHALEBONE AND WHALE IVORY WALKING STICK**, circa 1840, tapering whale ivory knob grip with red scribe lines, the whalebone twist carving with baleen thread wrapped in the groove, with 3 woven rings and a 7” section with baleen wrap. Length 36 ¼ in.

**206. WHALEBONE SAILOR MADE YARDSTICK**, circa 1850 with six engraved measures. Length 35 ¾ in.



207. **RALPH EUGENE CAHOON, JR. (1910-1982) "SEASIDE WEDDING PARTY"**, oil on Masonite, hot air balloons overhead crossing American clippers by the lighthouse and church clock tower, a very joyful wedding party of four mermaids and four sailors dancing with floral bouquets. Signed lower right R. Cahoon. 26 in. x 32 in.





**208. SUPERB AMERICAN CARVED PINE LIFE SIZE SWAN PLANTER**, circa 1880, the swan with its wings open and held close to its side, the neck is curved and elegantly extends forward, delicate carved tail, the swan appears as though it is swimming. There are traces of original gold finish under the tops of the wings and other projected areas, as it was originally gilded and created as an outdoor garden ornament. Height 41 in. Length 44 in. Width 24 in.



**209. PAIR OF STIDD LOW-BACK ADMIRAL CHAIRS**, circa 1990, with teak trim packages, each chair has stainless steel pedestal mount which has been attached to a round custom teak base with inset wheels. Green upholstery with navy blue piping, solid varnished teak ladderback decoration and custom embroidery with a circle of four dolphins around a shell and Narwhal embroidery on the backs.



**210. HAND PAINTED FOUR PANEL ROOM DIVIDER SCREEN**, 20<sup>th</sup> Century, a young sailor holding the prize celebrating onshore leave. 80 in. x 81 in.



**211. JULIO LARRAZ (CUBAN B. 1944), “THE MEETING”,** pastel and watercolor on paper, depicts bow of grey ship at sea with two standing figures and grey/white cloud overhead, watermark imprint repeated along top “MI-TEINTES CANSON”, signed lower right. 29 ¼ in. x 43 in. Provenance: Peter Findley Gallery.



**212. PAIR OF AMERICAN PINE DOORS REMOVED FROM THE USS CONSTITUTION,** these pine doors, circa 1850-1900 were given as a gift to an individual who made a large donation to the Constitution’s restoration fund during the ships’ extensive renovation from 1927-1931. This is a major opportunity to purchase a piece of US Naval history from the *USS Constitution*. Height 63 ½ in. x 48 ¾ in. together



**213. MARY JANE JANSON TOTTENHAM SELECT FAMILY MEMOIRS**, compiled by James Backhouse, York: William Alexander & Co., 1831. Rare fore edge book depicting a whaling scene. Leather bound with intricate tooling on cover and spine. Wear to cover and along spine edges.



**214. FRANCIS 1ST STERLING SILVER FLATWARE SERVICE BY REED & BARTON**, eight piece place setting: 12 dinner knives, 12 dinner forks, 12 salad forks, 12 teaspoons, 12 soup spoons, 12 ice tea spoons, 12 seafood cocktail forks, 12 butter knives.





**215. WILLIAM PASKELL (MASSACHUSETTS 1866-1951) “VIEW OF STONE ALLEY AND THE UNITARIAN CHURCH”**, oil on canvas, signed lower left Wm Paskell. 25 in. x 20 in.

William F. Paskell was born in London and moved to Boston in 1872 as a child. He was a promising artist at a young age and in 1884, the jury of the Boston Art Club accepted his paintings, the following year the Boston Museum of Fine Arts exhibited one of his works. His paintings hung beside the work of Childe Hassam and John J. Enneking in the Annual Boston Art Club exhibitions.



**216. SAILOR MADE WHALE IVORY AND WOOD SEWING STAND,** 19<sup>th</sup> Century, square step-down two drawer box with bone feet and pulls, 8 ivory acorn finials at the corners, a large turned ivory central pin cushion surrounded by four turned ivory spool holders and 4 turned ivory bodkin holders, all set in ivory discs. Height 13 in. Width 8  $\frac{3}{4}$  in. Depth 6  $\frac{1}{2}$  in.



**217. FINE WHALE IVORY LADY'S HAND PIE CRIMPER,** circa 1860, hand with multi-cuffs holding a stick with solid zigzag wheel and tortoise bell flower, end is used as a seal with the initials "L.S.T." Length 6 in.



**218. FANCY SAILOR MADE INLAID AND POLYCHROMED SWIFT,** circa 1850, known as the Baroque swift, one of 3 by this hand to date. The 2nd in a private collection and the 3rd at the New Bedford Whaling Museum and illustrated on page 278-279 in Stuart Frank's *Ingenious Contrivances, Curiously Carved Scrimshaw in the New Bedford Whaling Museum*. Among the three, this swift is the only one with silver and baleen dot inlaid ribs (1728 pieces). The top turned finial unscrews to accommodate a yarn ball to rest on the cup, ivory clasp and cup finial inlaid with abalone and silver dots with black and red scribe lines. More importantly an ivory shaft in three sections which generally is whalebone. Original green stained fitted box. Height 20 in. Diameter open 22 in.

**219. AMERICAN BRASS GAS CHANDELIER**, late 19<sup>th</sup> Century, with green emeraldite shade, 9 candle sockets have been electrified. Height 45 in. Diameter 36 in.



**220. CHINESE EXPORT FAMILLE VERTE COVERED TUREEN AND UNDER PLATTER**, circa 1830, the tureen with lotus flower finial and painted petals on a fine moulded cover, on a conforming pedestal body with branch twisted handles and matching oval under platter, all decorated with pheasants, birds, bugs and butterflies amongst flowers on a white ground. Tureen Length 14 in. Under Platter 18 in. x 14 ½ in.



**221. HAND WOVEN HERIZ CARPET**, circa 1920. 13 ft. x 10 ft.





**222. FOLK ART PAINTING “THE FRIENDLY GAME OF BASEBALL”**, oil on canvas depicting a baseball game with fans watching and American flag flying atop a building in the background. 10 ½ in. x 21 in.



**223. AMERICAN TIGER MAPLE AND MAPLE SLANT FRONT DESK**, circa 1790-1800, blocked interior with carved half fans, antique brass hardware, ogee bracket feet. Height 41 in. Width 36 in. Depth 18 ½ in.



**224. CANTON SAUCE TUREEN, COVER AND UNDERPLATE**, circa 1820, twisted applied handles with berries, cover with large flower bud finial, conforming oval under-plate all decorated with river landscapes and activities. Tureen Height 6 in. x 7 ½ in. x 5 in.

**225. AMERICAN CHERRY AND MAPLE WORK STAND**, circa 1825, square shaped tray top with veneered bird's eye maple top above a single drawer on deeply ring turned legs. Height 27 ½ in. Width 17 ¾ in. Depth 17 ¾ in.

**226. FINE CANTON FRUIT BOWL**, circa 1820, the exterior decorated with a continuous river landscape with boat, pagodas, birds, fishermen, the interior with single tree rising from an island, dagger and dot border. Height 4 in. Diameter 9 in.

**227. AMERICAN TIGER MAPLE CANDLESTAND**, circa 1820, round top on a turned tapering standard with three cabriole legs.



**228. THOMAS WILLIS (1850-1925) "AMERICAN STEAM SAIL YACHT ROUNDING HEADLAND"**, silk embroidery on painted canvas. 11 ½ in. x 17 ½ in.



**229. FINE AND SOPHISTICATED LADY'S WALKING STICK**, circa 1850, carved and reeded whalebone shaft and whale ivory paneled knob grip inlaid with 254 pieces of abalone, tortoise shell and baleen dots, crescent moons, stars, hearts, panels and diamonds, gold band and panel engraved 1837, two silver blocks with initials "W.N". Length 34  $\frac{3}{4}$  in.

**230. WHALEBONE POLYCHROME LADY'S BUSK**, mid 19<sup>th</sup> Century, carved from a piece of panbone with double dome crest, pine tree, lady with long hair, purse and reaching for a vine above the initials "M.C." with a warrior and potted plant under a weeping evergreen, all within an arrow feather border. Length 13  $\frac{3}{4}$  in.



**231. WHALEBONE BUSK**, circa 1860, whimsical depiction of a sperm whale's tail tied to the base of a tree by a country house with a bird perched on one of the trees. Another section depicts a gent with walking stick down the hill from a mansion, forest and church, all within a deeper carved zigzag border within line. Length 13 in.



**232. HAND WOVEN NORTH WEST PERSIAN DESIGN CARPET**, circa 1910. 13 ft. 9 in. x 3 ft. 1 in.



**233. FERDINAND SYLVARO (1868-1952) NANTUCKET DOUBLE HEART HANDLE SEWING BASKET**, with original hand written jelly label “Made by Ferdinand Sylvaro, 97 Orange St., Nantucket Mass. \$2.50”. Height 4 in. Diameter 8 ¾ in.





**234. THOMAS WILLIS (AMERICAN, 1850-1925) “PORTRAIT OF THE AMERICAN YACHT ZINITA”**, silk embroidery on painted canvas, signed lower right T. Willis. 16 in. x 24 in.



**235. CHINESE FAMILLE VERTE CONDIMENT DISH**, circa 1830, depicts women playing a board game. 8 ¾ in. x 4 ½ in.

**236. AMERICAN MAHOGANY AND POPLAR MINIATURE CHEST OF DRAWERS**, circa 1840, rectangular overhanging top above 3 drawers with cross banding and original brass pulls. Height 16 ½ in. Width 15 ½ in. Depth 10 in.

**237. CHINESE PORCELAIN DODECAGON SHALLOW DISH**, circa 1880, gilt gadroon border with a band of birds, foliage and butterflies surrounding a procession of royalty on horseback with attendants. Height 9 ½ in.



238. **THOMAS WILLIS (1850-1925) "PORTRAIT OF THE STEAM-SAIL YACHT ELEANOR"**, silk embroidery on painted canvas, signed lower right T. Willis, N.Y. Jan. 1900, original label on reverse "46 Stuyvesant Avenue, Brooklyn, N.Y." 42 in. x 26 in.



**239. JAMES E. BUTTERSWORTH (1817-1894) “YACHT RACE BOSTON HARBOR, 1865-1880”,** oil on wood panel views of the State House dome on Beacon Hill, Boston Light, Bunker Hill Monument and Fort Independence, signed lower right J.E. Buttersworth. 6 ¼ in. x 12 ¼ in. Boston was one of Buttersworth’s favorite settings.



**240. SAILOR MADE PANBONE SWING HANDLE BASKET**, circa 1850, pine bottom wrapped with a single piece of pierced panbone of interlocking circles, anchors and diamonds, a solid swing handle attached by rivets. Height 2  $\frac{3}{4}$  in. x 8 in. x 4  $\frac{3}{4}$  in. Illustrated: Robert W.D. Ball's *Nautical Antiques*, Schiffer Publ. 1994, pg 105.



**241. SAILOR MADE PANBONE OVAL DITTY BOX**, circa 1850, the panbone top scrimshawed with sailor and female embracing, the cover and box joined by rivets. Height 3 in. x 6  $\frac{3}{4}$  in. x 5 in.



**242. SAILOR MADE PANBONE ROUND DITTY BOX**, circa 1850, mahogany top with ivory ball finial and 3 laps, the box wrapped with a single piece of panbone with 7 scallop laps and rivets. Height 4 in. Diameter 7 in.





**243. SAILOR MADE NANTUCKET PIERCED PANBONE SWING HANDLE OVAL BASKET**, circa 1850, pine wood bottom wrapped with a single piece of panbone, cut with interlocking circles and dots and swing handle attached by rivet. Height 4 in. x 10 ¼ in. x 6 ½ in.



**244. SAILOR MADE SCRIMSHAWED OVAL PANBONE DITTY BOX**, 19<sup>th</sup> Century, pine top and bottom, the lid engraved with a wraparound floral and leaf vine, the box engraved with eagle, reindeer pulling a sled with gentleman, farm cart approaching a windmill, tree and mansion. Height 2 ¾ in. x 6 in. x 4 ¼ in.



**245. SAILOR MADE PANBONE OVAL INLAID DITTY BOX**, mid-19<sup>th</sup> Century, the lid with inlaid rosewood star within an ivory and wood wreath and wrapped in panbone, the base wrapped with a single piece of panbone and joined with 3 finger laps. Height 3 in. x 8 ¼ in. x 6 in.



**246. OLIVER C. COFFIN ROUND OPEN NANTUCKET BASKET WITH SWING HANDLE**, late 19<sup>th</sup> Century, 10 interior concentric circles and scribe lines, shaped handle with lollipop ends with cut brass ears, rare printed paper label “*South Shoal Lightship by O.C. Coffin*”. Height 4 ½ in. Diameter 11 in.



**247. NANTUCKET FOLGER DECANTER BOX**, mid 19<sup>th</sup> Century, hand wrought iron strap hinges, 12 bottle fittings, 4 blown green glass bottles, inscribed in paint “J. Folger, Nantucket” on interior lid. Original green exterior paint with wrought iron handles. Height 12 in. Width 19 ½ in. Depth 14 in.



**248. WILHELM SCHIMMEL STYLE CARVED AND DECORATED FOLK ART EAGLE.** Height 17 ½ in. Wingspread 34 ½ in.

**249. PENNSYLVANIA CHERRY TALL CHEST, 18<sup>th</sup> Century,** dental crown molding above five graduated drawers, carved pinwheel drop pediment on bracket feet. Height 46 ½ in. Width 38 ½ in. Depth 19 in.

**250. PAIR OF PHILADELPHIA URN AND FINIAL TOP BRASS ANDIRONS,** circa 1790, turned standard, square plinth base on arched legs and penny feet. Height 22 in.



**251. HAND WOVEN KARAJE CARPET,** circa 1930. 13 ft. 3 in. x 3 ft. 3 in.



**252. SAILOR MADE OVAL PANBONE SCRIMSHAWED DITTY BOX**, mid-19<sup>th</sup> Century, pine top and bottom, both wrapped in panbone, the box with 2 long gooseneck latches. Wraparound polychrome engraving of a budding floral vine. Height 2  $\frac{3}{4}$  in. x 5  $\frac{1}{4}$  in. x 4 in.



**253. RICHARD K. LOUD (MASSACHUSETTS B. 1942) OIL ON LINEN** “CATBOATS SAILING IN GLOUCESTER HARBOR”, signed lower right Loud, in custom gold leaf frame. 16 in. x 20 in.



**254. SAILOR MADE PANBONE OVAL INLAID DITTY BOX**, circa 1850, multiwood star and diamond inlaid top with two finger latches ending in lollipop ends, the box with pine base and 5 finger latches. Height 2  $\frac{1}{2}$  in. x 7 in. x 5  $\frac{1}{4}$  in.





**255. SAILOR MADE NANTUCKET PIERCED PANBONE SWING HANDLE OVAL BASKET**, circa 1850, cherry bottom wrapped with panbone having interlocking circles with arches and spikes, handle attached with a rivet.

Height 2 ¼ in. x 6 ½ in x 4 ¾ in.

A similar basket by the same hand and similar size sold at Rafael Osona's Auction August 1, 2009, lot 98.



**256. SAILOR MADE PANBONE OVAL INLAID DITTY BOX**, circa 1850, Honduras mahogany top inlaid with an ivory oval surrounded by 2 bands of baleen and ivory diamonds and wrapped in panbone with 2 circular laps. The box wrapped in a single piece of panbone joined by 4 lollipops, spikes and cutout circles with copper rivets.

Height 2 ¾ in. x 7 in. x 5 ¼ in.



**257. SAILOR MADE PANBONE OVAL DITTY BOX**, circa 1850, the wood cover inlaid with 66 pieces of mother of pearl, ivory, 5 types of tropical woods and wrapped with panbone. The box wrapped with a single piece of panbone joined by 5 scalloped laps. Height 4 in. x 8 in. x 6 in.



**258. ENGLISH MAHOGANY CHEST ON CHEST,**  
18<sup>th</sup> Century, in two sections: upper with dental and fretwork, step moldings and frieze above two over three drawers flanked by chamfered fluted columns. Lower case with three graduating drawers on bracket feet, replaced brass batwing post and bail hardware. Height 73 in. Width 42 in. Depth 20 in.



**259. PAIR OF PHILADELPHIA BRASS ACORN ANDIRONS,** circa 1770, attributed to Daniel King, plinth base, arched spurred legs and penny feet. Height 14 in.

**260. THREE PIECE ACORN TOP BRASS FIREPLACE TOOL SET,**  
19<sup>th</sup> Century, turned and molded shafts with penny tongs, shovel, and poker.



**261. MICHAEL SHERLINGH (RUSSIAN 1893-1943) “RIVERSCAPE”,** oil on canvas, signed lower left. 24 ½ in. x 29 ½ in.



**262. ENGLISH DIMINUTIVE DRUM TABLE**, circa 1840, inserted leather top with double line inlay above four working and four false cock beaded and line inlaid drawers with brass knob pulls. The top swivels on a turned standard with three sabre legs and brass cup casters. Height 28 ½ in. Diameter 39 ½ in.

**263. CHINESE EXPORT PORCELAIN PUNCH BOWL**, 18<sup>th</sup> Century. Height 4 ½ in. Diameter 11 ½ in.



**264. SAILOR MADE PANBONE**

**OVAL DITTY BOX**, circa 1850, mahogany lid wrapped with a single piece of panbone joined by double line of rivets ending in a saw tooth design. Hand written on bottom: "*T.J.H. Nantucket, Mass.*" Height 3 in. x 8 ½ in. x 6 ¼ in.

**265. SAILOR MADE PANBONE**

**OVAL DITTY BOX**, circa 1850, the pine top and bottom wrapped with panbone, scalloped bands and rivets. Height 3 in. x 9 ¼ in. x 6 in.



**266. SAILOR MADE OVAL PANBONE DITTY BOX**, circa 1850, pine wood top with turned whale ivory knob and plaque, the box of a single piece of panbone with an elaborate lattice cutout. Note: Top and bottom are married. Height 4 ¼ in. x 6 ¼ in. x 5 in.



**267. SAILOR MADE PANBONE DITTY BOX**, circa 1850, oval form with wood top and bottom, saw-tooth overlap with rivets. Height 1 ¾ in. x 6 in. x 4 ½ in.

**268. SAILOR MADE PANBONE DITTY BOX**, circa 1850, round form with pudding mahogany top and base, wrapped with a single piece of panbone with 7 scallop laps and a double line of rivets. Height 4 in. Diameter 8 in.



**269. SAILOR MADE PUZZLE IN A BOTTLE,** 19<sup>th</sup> Century, eight-tier carved bone crosses with tassels and line. Height 6 in.

**270. SAILOR MADE WHALEBONE AND WOOD DITTY BOX,** circa 1860, oval form with wood top and bottom with bone band having scalloped laps. Height 3 ½ in. x 9 ¼ in. x 6 ¾ in.



**271. SAILOR MADE PANBONE OVAL DITTY BOX,** circa 1850, the top and base both wrapped with single piece of panbone and joined collectively by 8 laps of twin circles, arrowheads and lollipop ends, boldly studded with brass tacks and rivets. Height 3 ½ in. x 8 in. x 6 in.

**272. SAILOR MADE PANBONE AND MAHOGANY OVAL DITTY BOX,** circa 1850, domed wood with bone band, the box with a large piece of panbone joined by a piece of vertical bone with double line of rivets. Height 6 in. x 10 in. x 7 ½ in.



**273. SAILOR MADE MINIATURE IVORY DIEPPE SHIP MODEL,** 19<sup>th</sup> Century, a three mast square rigged clipper ship with two deck hands and life boat. Height 2 ¾ in. Length 3 in. Width ¾ in.



**274. SET OF TEN ENGLISH WINDSOR DINING CHAIRS**, circa 1800, comprising all armchairs with shaped single board elm seats, crinoline stretchers.



**275. MAHOGANY ISLE OF MAN TRIPOD BIRDCAGE TILT TOP TEA TABLE**, 18<sup>th</sup> Century, with life-like carved legs ending in carved cap-toe shoes, rare example. Height 30 in. Diameter 40 in.



**276. FOLK ART CARVED ADVERTISING STORE FRONT FIGURE,**  
 19<sup>th</sup> Century, a very fine carved and polychrome figure of a young sailor holding an octant. The figure was acquired in England and was possibly a store front advertising figure for one of John Cail's instrument shops between 1825-1858 in Newcastle-on-Tyne. Height 66 in.



**277. DUTCH POLYCHROME CARVING OF A BAWDY WOMAN RUDDER HEAD**, circa 1820, very finely carved risqué woman wearing an iron earring in each earlobe, black wavy hair to her shoulders, large pearl-like necklace, and large exposed breasts. She is wearing a black top hat with upswept rim with gilded feathers flanking each side of the hat. The rudder head retains its old in-service paint with scattered paint loss, with some original gilt decoration remaining. Height 28 in., Width 11 in. Depth 16 in.





**278. CARVED AND POLYCHROMED SHIP'S FIGUREHEAD**, circa 1840, a waist high figure of a bearded Scotsman wearing a plumed hat, shirt with a brass buttoned jacket and belt. Height 31 in. Width 19 in. Depth 14 in.



**279. HAND WOVEN HERIZ CARPET**, circa 1920. 10 ft. 5 in. x 7 ft. 4 in.



**280. PAIR OF CLOISONNE AND ENAMEL PLANTERS**, 19<sup>th</sup> Century. Height 5 ½ in. Diameter 14 in.

**281. QUEEN ANNE HONDURAS MAHOGANY DROP LEAF TABLE**, 18<sup>th</sup> Century. Height 28 ½ in. Length 47 in. Width Open 60 in. Closed 20 in.



**282. SPANISH BRASS STANDISH**, last quarter of the 18<sup>th</sup> Century, 4 covered removable canisters, bell and candle holder on a scalloped skirt stand. Height 6 ½ in. x 9 ½ in. x 7 in.

**283. ENGLISH BRASS TAVERN STICK**, circa 1850, mid body with wheel and bell. Height 11 ¾ in.

**284. ENGLISH SERPENTINE SHELL INLAID SERVING TRAY**, 19<sup>th</sup> Century, tulip and satinwood center, candy stripe gallery with brass handles. 23 in. x 15 in.



**285. ENGLISH BIRD'S EYE MAPLE DAVENPORT DESK**, circa 1850, exquisitely matched maple veneer throughout. Hinged leather slanted writing surface with brass gallery and mechanical sliding boxed top, four graduating drawers on a shaped skirt. Height 33 in. Width 18 ½ in. Depth 23 in.



**286. TWELVE RARE JAPANESE “SHUNGA” OR “PILLOW BOOK” EROTIC PAINTINGS**, 2<sup>nd</sup> half of the 19<sup>th</sup> Century, watercolor and gouache on silk, laid down on rice paper, in their original slip case. Shunga were produced between the 16<sup>th</sup> C. and the 19<sup>th</sup> C. by ukiyo-e artists, since they sold more easily and at a higher price than their ordinary work.



**287. GROUP OF EIGHT CHINESE MINIATURE PORCELAIN TEAPOTS**, circa 1830-1850.

**288. NEST OF THREE CHINESE MINIATURE TEAK WOOD TABLES.**

**289. CHINESE EXPORT MANDARIN PLATE**, 18<sup>th</sup> C., decorated with figures and animals in a garden, together with a Chinese Mandarin bowl with figures in a garden cameo. Diameter 8 ¼ in.







**290. MILANESE OR NORTHERN ITALIAN MARQUETRY WALNUT COMMODE**, 18<sup>th</sup> Century, the rectangular top inlaid with three panels and oval shell inlay on tulip wood, three drawers with similar walnut panels, flanked by chamfered corners with vine and barber's pole inlays. Height 34 in. Width 48  $\frac{3}{4}$  in. Depth 22  $\frac{3}{4}$  in.



**291. FRENCH CARVED OAK CANED SEAT HIGHBACK YOUTH WING CHAIR**, circa 1890, signed Heber Lipmann. Height 29  $\frac{1}{2}$  in.

**292. ENGLISH PAPIER MACHE SHAPED LACQUER TRAY**, 19<sup>th</sup> Century, hand gilt painted and inlaid with mother of pearl. 33 in. x 27 in.



**293. JACK LORIMER GRAY (NEW YORK/NOVA SCOTIA/CANADA 1927-1981) "ON BROWNS"**, oil on canvas of two fishermen in dory salt fishing on Brown's Bank, with Lunenburg schooner in the distance, signed lower right Jack L. Gray. 36 in. x 48 in.



**294. JACK LORIMER GRAY (NEW YORK/NOVA SCOTIA/CANADA 1927-1981) "FISHING TRAWLER OFF PROVINCETOWN",**  
oil on canvas, signed lower right Jack L. Gray. 24 in. x 36 in.



**295. JACK LORIMER GRAY (NEW YORK/NOVA SCOTIA/CANADA 1927-1981) “FISHING TRAWLER AT SEA”, oil on canvas, signed lower left Jack L. Gray. 8 in. x 12 in.**



**296. PAIR OF ENGLISH GREEN PATINA BRONZE DOLPHIN DOORSTOPS, 19<sup>th</sup> Century with applied wings and long tail wrapped around a trident on rectangular step base. Height 23 in.**

**297. MAHOGANY AND SATINWOOD OCTAGONAL CHEVRON INLAID TEA CADDY, 19<sup>th</sup> Century.**

**298. HEART ROSE SAILOR’S VALENTINE, circa 1870. Diameter 14 in.**



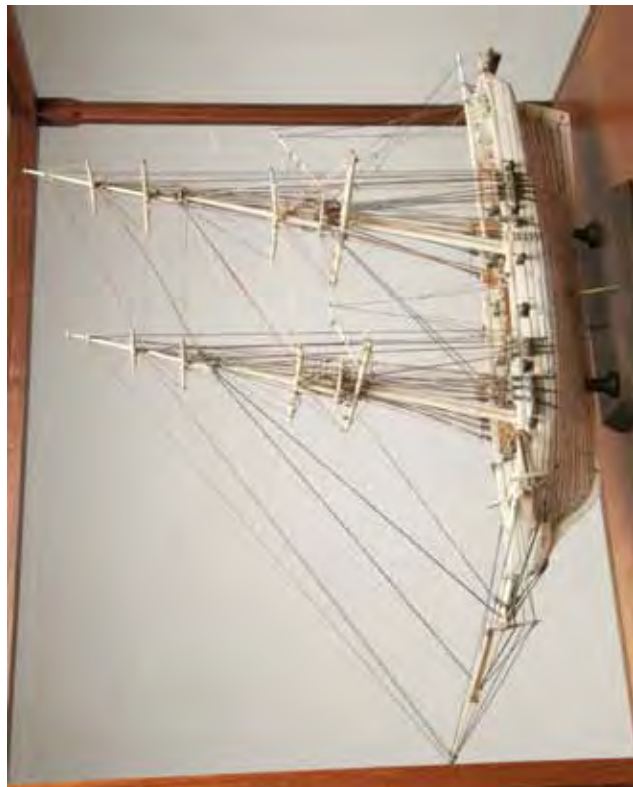


**299. COPPER INDIAN WEATHERVANE, POSSIBLY HARRIS & CO.,**  
early 20<sup>th</sup> Century. Height 39 in. Width 40 in.



**300. AMERICAN CARVED PINE AND POLYCHROME EAGLE PLAQUE,**  
19<sup>th</sup> Century, profile of a spread winged eagle clenching a shield on a rock formation.  
20 in. x 41 in.

**301. CARVED BONE MODEL OF THE AMERICAN BRIG "PERRY"**, circa 1845, finely detailed model of the twelve-gun man-of-war with plank on frame constructed hull and deck, bone spars, bowsprit and tackle, twelve turned bronze cannon on naval carriages with bone wheels, fitted wooden life boats and bronze anchor. Height 27 in. Length 31 in. Width 14 in.



The Brig Perry was built at the Norfolk Navy Yard in 1843 along the lines of a Baltimore clipper, in many ways resembling Humphrey's brigs. She was 105 feet in length, 25 feet 6 inches abeam and drew 12 feet 6 inches. She proved to be one of the fastest ships in the Navy and captured a Confederate privateer during the Civil War. She was sold at Philadelphia in 1865 and was employed as a merchant vessel.

Provenance: Estate of Dr. John Payson Adams of Middletown, Rhode Island, formerly married to Muriel Vanderbilt Adams, Nantucket Estate of Georgia P. Gosnell.





**302. CASED MODEL OF THE AMERICAN WHALING BRIGANTINE "VIOLA",** made by C. Rayborne, 1st Class workmanship, fully rigged with crew on deck in full sails.  $\frac{1}{4}$  in. = 1 ft.  
Height 36 in. Length  $47\frac{1}{2}$  in. Width  $17\frac{1}{4}$  in.





**303. "RIVERSCAPE"**, oil on canvas, 19<sup>th</sup> Century, a King Fisher perched on a log, signed indistinctly lower right P. Hunt, in original period gilt frame. 22 ½ in. x 35 ½ in.



**304. SHERATON TIGER MAPLE AND CHERRY FOUR DRAWER GRADUATED CHEST**, circa 1830-1840, rectangular top, cockbeaded drawers, shaped skirt and turned feet. Height 42 in. Width 42 in. Depth 21 in.





**305. SCRIMSHAW WHALE TOOTH**, circa 1860, engraved with three longboats going on a whale. Length 7 in.



**306. WHALE IVORY PIE CRIMPER**, circa 1870, double serpent handle carved from a single tooth, the open wheel is carved with star center and heart and diamond ending in angled sawtooth, surmounted with a hatch carved stamp and three-prong fork. Length 8 ¼ in.



**307. SAMUEL W. GRIGGS (1827-1898) “NEW HAMPSHIRE WHITE MOUNTAIN LAKE SCENE”,** 1878 oil on canvas, depicting a peaceful lake scene with angler on the banks, three men in a dory, paddle sidewheeler, sailboats and houseboat. Signed and dated on a log “S.W.G. ’78”. Original elaborate gilt frame. 22 in. x 36 in.

Samuel Griggs was listed in the Boston City Directory from 1848 to 1852 as an architect, and as an artist from 1854 onward. It is believed that he studied under Albert Bierstadt before he was well known, and displayed a painting in an Albert Bierstadt exhibition in New Bedford, Massachusetts, as well as the Boston Athenaeum and Boston Art Club.



**308. CARVED AND GILDED PILOT HOUSE EAGLE, 19<sup>th</sup> Century, in aggressive posture, standing on a rock formation.**  
Height 30 in. Width 26 in. Depth 30 in.



**309. SCRIMSHAW FASHION WHALE TOOTH**, circa 1840, accompanied by original circa 1840s hand colored print by William Wolfe Alais who exhibited at the Royal Academy in 1829 & 1833, and from which this whaler gained his inspiration. Paper hand written sticker on reverse "*Tooth of a Sperm Whale, South Pacific*". Length 7 in.



**310. POLYCHROMED SCRIMSHAW WHALE TOOTH**, circa 1870, depicting a well dressed Mother and daughter in fancy garb, copied from an illustration in the 1857 edition of Harper's Monthly Magazine, the reverse engraved with two clipper ships. Height 6 ½ in.





**311. WHALEBONE DOUBLE SWIFT**, mid 19th Century, fluted staves, ribbon tied, massive rosewood clamp inlaid with 6 whalebone hearts and geometric divides, figured heart thumbscrew, whale ivory finial. Staves 14 in. Height 27 in.



**312. OVERSIZED JOSÉ FORMOSO REYES (1902-1980) FRIENDSHIP BASKET**, circa 1965, with antique bodkin peg and carved ivory sperm whale on pine lid, signed upon the base "José Formoso Reyes, Made in Nantucket, 1965". Height 7 in. Width 11 ½ in. Depth 9 in.

## Commodore Edward Preble

Born August 15, 1761 Falmouth, Maine Died August 25, 1807 Portland, Maine

Edward Preble began his naval career in 1779 during the American Revolution with his appointment to the Massachusetts State Navy. He served as an officer aboard the 26 gun ship *Protector* and the *Winthrop* during the war. Following his Revolutionary War service, he embarked on fifteen years of merchant service before being commissioned as a First Lieutenant in the U.S. Navy in April 1798. Preble was given command of the 14 gun *USS Pickering* in January 1799 during the Quasi-War with France. On June 7<sup>th</sup> of that year he was commissioned as a Captain and took command of the *USS Essex* in December. He commanded the *Essex* in the Pacific providing protection for American vessels engaged in the East Indies trade.

In 1803, Preble rose to the rank of Commodore and was given command of the third Squadron of the U.S. Navy's Mediterranean Fleet. With the *USS Constitution* as his flagship, he sailed for the Barbary Coast in 1803 during the Tripolitan or First Barbary War. Preble and his fleet established a blockade off the coast of Tripoli. On February 16, 1804, Preble masterminded the raid by Stephen Decatur to burn the *USS Philadelphia* in Tripoli harbor to prevent the captured warship from being used against the U.S. Navy fleet. Aboard the *USS Intrepid*, a captured Tripolitan ketch, Decatur slipped into the Tripoli harbor under the cover of darkness and successfully burned the *USS Philadelphia* without a shot being fired from either side. Preble then successfully bombarded Tripoli with the American Fleet, helping to bring a rapid end to the war.

During this period many of the most well known and influential figures in U.S. Naval history served under Preble's command including Stephen Decatur, Issac Hull, Charles Stewart and William Bainbridge, collectively known by the unofficial title of "Preble's Boys." Commodore Preble was known to his command as being a very stern and disciplined leader. His actions would help to establish many of the modern rules and regulations of the U.S. Navy.

In September of 1804, Preble requested relief of command of the squadron due to illness. He returned to the U.S. in February of 1805 and was awarded a gold medal by Congressional resolution for "gallantry and good conduct" of himself and the squadron at Tripoli. Preble would die in Portland, Maine of gastrointestinal illness on August 25, 1807.

This Preble portrait is one of a small group of known portraits of the Commodore. The United States Naval Academy has a portrait of Preble painted by Rembrandt Peale in its collection. Another portrait of Preble which can be attributed to the school of Rembrandt Peale is held in the collection of the Maine Historical Society. An incorrectly attributed Gilbert Stuart portrait of Preble was hung at Faneuil Hall in Boston. This portrait offered here is believed to be a member of the group painted by the school or after Rembrandt Peale due to similarities in composition and manner of painting.



**313. PORTRAIT OF COMMODORE EDWARD PREBLE (1761-1807)**, early 19<sup>th</sup> Century, oil on canvas depicting Commodore Preble sitting before a window with a view of Mt. Vesuvius and the *USS Constitution* in the distance. 43 ½ in. x 35 in.



**314. FOLK ART CARVING OF CAPTAIN AHAH STANDING ON A WHALE**, a fine carved and polychromed figure of Ahab wearing a stove pipe hat, red neck scarf, black coat with tails, holding a harpoon, about to strike. Height 55 ½ in.

**315. SAMPLER, “AGNES RAMSAY AGED 12 YEARS”**, late 18th - early 19th century, *“Jesus permit thy gracious name to stand as the first effort of an infant’s hand and while finger o’er this canvass move, engage her tender heart to seek thy love with thy dear children, let her share a part and write thy name thyself upon her heart”*. Initials JR & HR . 17 in. x 12 in.







**316. QUEEN ANNE BRASS  
CANDLESTICK**, 18<sup>th</sup> Century,  
petal form base. Height 7 ¼ in.

**317. MINIATURE  
PENNSYLVANIA DUTCH LIFT  
TOP BLANKET CHEST**,  
circa 1787, hand painted tulip motif  
and DM 1787 on turned feet.



**318. SAILOR MADE BIRDCAGE**, 19<sup>th</sup> Century with applied carved bone finials,  
diamonds, and flower heads. Height 16 in. Width 10 ½ in. Depth 8 ¼ in.

**319. WHALEBONE SCRIBED 12 INCH RULER**, 19<sup>th</sup> Century.



**320. CAPTAIN'S DECANTER BOX**, 19<sup>th</sup> Century, square mahogany fitted box, hinged mid-way with four crystal decanters having drinking glass stoppers. Height 9 in. Width 8 ½ in. Depth 8 ½ in.



**321. MAHOGANY AND SATINWOOD INLAID TEA CADDY**, early 19<sup>th</sup> Century, decorated with multi-wood shell inlay on top and front, quarter fans in corners, line inlay, ivory escutcheon. 4 ¾ in. x 5 in. x 5 in.

**322. MAHOGANY INLAID CUBE SHAPED TEA CADDY**, 19<sup>th</sup> Century, fitted interior lid, and decorated on five sides with mahogany and maple fan inlays, ivory escutcheon. 5 in. x 4 ½ in. x 4 ½ in.

**323. MAHOGANY INLAID DOUBLE COMPARTMENT TEA CADDY**, 19<sup>th</sup> Century, decorated with multi-wood inlay of shells and potted plants, ivory escutcheon. 5 in. x 7 ½ in. x 4 in.



**324. PENNSYLVANIA HOOP-BACK WINDSOR ARMCHAIR**, circa 1790, shaped hand grips, oval plank seat on turned legs and stretchers. Seat Height 16 in.

**325. BRASS CANDLESTICK**, 18<sup>th</sup> Century, square gadroon base, carved and turned standard. Height 10 in.

**326. CHINESE EXPORT ARMORIAL TEAPOT**, circa 1790, bud finial cover, stylized dragon spout. Height 6 in.

**327. PENNSYLVANIA WALNUT TILT TOP CANDLESTAND**, circa 1790, round dish top on a birdcage with turned standard and tripod stand. Height 28 in. Diameter 20 in.



**328. CHINESE EXPORT TEAPOT**, 18<sup>th</sup> Century, with floral and stylized scales decorations.

**329. CHINESE EXPORT TEAPOT**, 18<sup>th</sup> Century, harbor scene cameos and scale decorations.



**330. THOMAS BROOKS (BRITISH 1818-1891) “PORTRAIT OF A YOUNG LADY AND THE SEA”**, circa 1862, oil on canvas depicting a young woman searching the rough seas, initialed and dated lower left “T.B. 1862” with label on reverse “14 Exchange Street, Manchester”. 20 ¼ in. x 16 ¼ in.

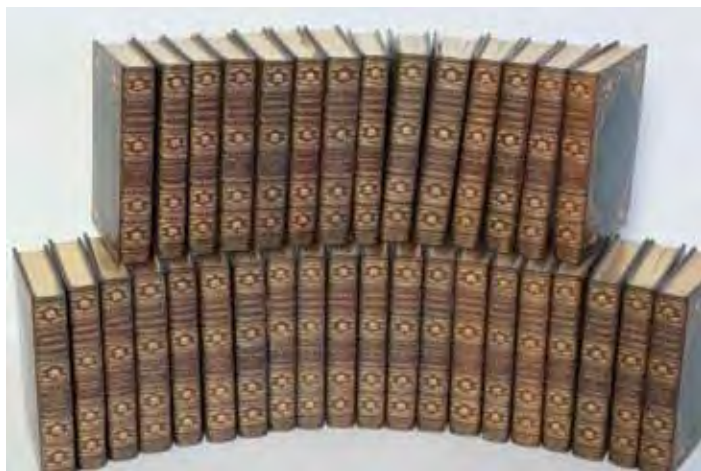


**331. COLLECTION OF ANTIQUE BOOKS BY ROBERT LOUIS STEVENSON (38 VOLS.)**, Rebound with gilt tooled cover and spine, includes original cover and spine at end of book. Includes *Edinburgh*, a book of Picturesque Notes by Stevenson with etchings by A. Bunet-Debaines, 1879. Minor cover damage to three volumes (*The Black Arrow*, *Travels with a Donkey*, and *The Silverado Squatters*). And *The Life of Robert Louis Stevenson* (2 Vols), Graham Balfour, London: Methuen and Co., 1901. Rebound with gilt tooled cover and spine.





**332. “PORTRAIT OF A YOUNG CAPTAIN”**, oil on canvas, 19<sup>th</sup> Century, depicting a young Captain on the rail of his ship clenching a telescope, artist unknown, in a contemporary 4” gilt frame with scallop shell corners. 28 ½ in. x 23 in.



**333. AMERICAN STATESMAN, (32 VOLS.)**, ed. John T. Morse, Boston & New York: Houghton, Mifflin & Co., 1899, large paper edition, limited edition 198/500. Each volume contains one or more signed reference documents of the attributed statesman. Original cover and spine with gilt tooling on spine and cover. Overall great condition with very minor foxing on top of end pages in some volumes.



**334. FRENCH METAL SCULPTURE**  
**“PLACE SAINT MARC” AFTER**  
**ARMAND GODARD**, 20<sup>th</sup> Century,  
 depicting a well dressed lady with doves  
 on a marble base, signed Godard.  
 Height 15  $\frac{3}{4}$  in.



**335. LOUIS XV STYLE INLAID AND BRONZE MOUNTED GAME TABLE,**  
 19<sup>th</sup> Century, Kingwood and inlaid ebonized chessboard top.  
 Height 28  $\frac{3}{4}$  in. Width 36 in. Depth 19  $\frac{3}{4}$  in.



**336. TIFFANY & CO. EARLY PROTOTYPE GREEN PATINA NEWEL POST LAMP**, stamped #S1129, G.E. Co. light sockets, unmarked glass shades Height 26 in. Diameter base 9 ¾ in.



**337. TIFFANY STUDIOS LEADED GLASS SHADE.** Height 6 ½ in. Diameter 15 ¾ in.



**338. HAND WOVEN HERIZ CARPET**, circa 1920. 10 ft. 8 in. x 7 ft.

**339. ENGLISH PEMBROKE TABLE**, circa 1800, ebony line inlays, crossbanded shaped leaves, one drawer, tapering square legs ending in brass cup casters. Height 29 in. Width 20 in. Length 28 in.

**340. KUTANI DECORATED PORCELAIN LAMP**, late 19<sup>th</sup> Century. Height 17 in.

**341. TWO CHINESE EXPORT DISHES**, 18<sup>th</sup> Century. Diameters: 8  $\frac{3}{4}$  in. and 9  $\frac{3}{4}$  in.







**342. ENGLISH SILK EMBROIDERED THEATRICAL SCENE**, 19<sup>th</sup> Century, depicting a knight and maiden, in period frame. 11 in. x 14 ½ in.



**343. CONTINENTAL CARVED AND PAINTED FOLK ART FIGURAL HANGING FIXTURE**, circa 1900, depicting an Inn Keeper, or Wine Steward, holding keys in his left hand, ram's horns extending from his backside. Height 18 in.



**344. CHINESE EXPORT FAMILLE VERTE OVAL PLATTER**, circa 1830, figures in a garden scene within a gilt border of bugs and flowers.  
13  $\frac{3}{4}$  in. x 9 in.

**345. CHINESE EXPORT DOUBLE HANDLE COVERED CUP AND COVERED CREAMER**, 18<sup>th</sup> Century.



**346. FINE ROSE MANDARIN TALL VASE**, circa 1830, four applied gilt foo lion's heads, clusters of figural gatherings around the body of the vase with foliage, birds and butterflies. Height 24  $\frac{1}{2}$  in.



**347. DUTCH COLONIAL STORAGE BOX**, early 18<sup>th</sup> Century, square dovetailed box with pierced long strap hinges, pierced post and bird handles and brass lock plate. Height 23  $\frac{1}{2}$  in. Width 19  $\frac{1}{2}$  in. Depth 20 in.

**348. ENGLISH CARVED SIDE CHAIR**, 18<sup>th</sup> Century, foliated carved crest rail.



**349. A. RAUTER (GERMAN 19TH C.) "SPANISH INN"**, oil on canvas, signed lower left A. Rauter, the title plate reads "Alex Rauter, Collection of Dr. & Mrs. Mac F. Cahal". 19 ½ in. x 29 ½ in.

**350. CHINESE EXPORT ROSE MEDALLION PORCELAIN PRESENTATION TRAY**, 19<sup>th</sup> Century, with six panel decoration, shaped border and gilt inscription. 16 in. x 13 ½ in.

**351. MASSACHUSETTS MAHOGANY GREEK REVIVAL GAME TABLE**, 19<sup>th</sup> Century, in the School of Samuel MacIntire, with cross banded inlaid top, felt playing surface, acanthus carved column and knees, paw foot casters with round ball wheels. Height 29 ½ in. Width 36 ½ in. Depth 18 in.





**352. LIMITED EDITION PATINA  
BRONZE SCULPTURE OF A  
SQUATTING FEMALE NUDE**, from  
the island of Bora Bora. Signed upon the  
foot, edition #6/8. Height 6 ¼ in.







**353. JAPANESE BRONZE OF A YOUNG BOY CRAWLING**, grasshopper on his shoulder, signed upon the base of foot. Height 5 ½ in. Length 9 in.



**354. SET OF THREE CHINESE EXPORT WATERCOLORS**, circa 1840, butterflies amongst foliage, two signed lower left with characters. 9 in. x 12 ¼ in., 8 in. x 12 ¾ in., 7 ¼ in. x 11 ¾ in.

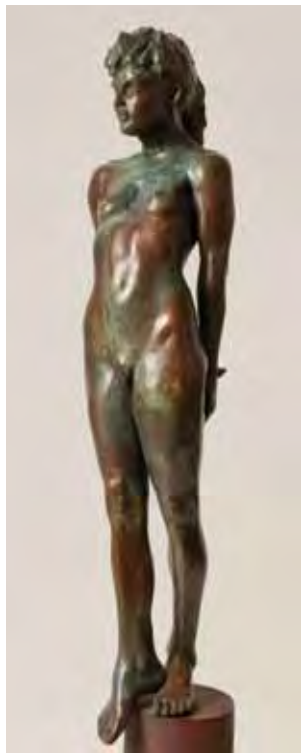


**355. CONTINENTAL BURLWOOD, ROSEWOOD AND EBONY TANTALUS SET**, 19<sup>th</sup> Century, square form in burlwood with herringbone band inlay throughout, ebony trim and rosewood interior, bronze lift out decanter and glass caddy. Height 11 in. Width 13 ½ in. Depth 10 ¼ in.

**356. AMERICAN MAHOGANY INLAID TABLE TOP WINE COOLER**, circa 1820, square form hinged to expose a lead divider for 5 decanters on bronze claw and ball feet. Height 13 in. Width 13 in. Depth 13 in.



**357. AMERICAN MAHOGANY INLAID THREE PART DINING TABLE**, circa 1800. Width 54 in. Length 120 in.



**358. GARY MAURO (NEW MEXICO 20<sup>TH</sup> CENTURY) PATINA BRONZE SCULPTURE “STANDING FEMALE NUDE”**, the sculpted woman standing on the edge of a cylindrical pedestal with one foot over the edge, signed on pedestal “G. Mauro ‘94, #1/30”. Height Bronze 18 in.



**359. PAIR OF CHINESE EXPORT ARMORIAL PORCELAIN PLATES**, circa 1790. Diameter 9  $\frac{3}{4}$  in.

**360. PAIR OF CHINESE EXPORT ARMORIAL SAUCERS**, circa 1790. Diameter 5  $\frac{1}{4}$  in.

**361. CHINESE EXPORT ARMORIAL PIN TRAY**, circa 1790. 4  $\frac{3}{4}$  in. x 3  $\frac{3}{4}$  in.



**362. FRENCH PRISONER-OF-WAR POLYCHROME AND CARVED BEEF BONE SEWING BOX**, circa 1827, initialed H.M. and dated 1827.  
Height 6 ½ in. Width 10 ½ in. Depth 7 in.



**363. FRENCH PRISONER-OF-WAR POLYCHROME ETCHED BEEF BONE JEWELRY BOX**, circa 1800, paneled top. 6 in. x 9 in.

**364. FRENCH PRISONER-OF-WAR POLYCHROME ETCHED BEEF BONE JEWELRY BOX**, circa 1800. 6 in. x 9 in.



**365. FRENCH PRISONER-OF-WAR POLYCHROME CARVED BEEF BONE GAME BOX**, early 19<sup>th</sup> Century, with full set of dominoes and dice. 3 in. x 6 in. x 2 in.

**366. FRENCH PRISONER-OF-WAR POLYCHROME, TINSEL AND CARVED BEEF BONE GAME BOX**, early 19<sup>th</sup> Century.  
1 ¾ in. x 6 ½ in. x 2 ¼ in.





**367. FRENCH PRISONER-OF-WAR ETCHED AND PIERCED CARVED BEEF BONE BOX**, circa 1800, brass handles and carved acorn and leaf plaque.  
4 ¾ in. x 8 ¾ in.

**368. FRENCH PRISONER-OF-WAR ETCHED AND PIERCED CARVED BEEF BONE BOX**, circa 1800, brass handles and dual compartment interior.  
4 ¾ in. x 8 ½ in.



**369. FOLK ART MARQUETRY CARD TABLE**, Mid-Century, large central star with triangles, hearts, mother of pearl diamonds, celluloid playing cards, all within star and candy striped borders, on a multi-wood pedestal standard.  
30 in. Square Top



**370. ROSE MEDALLION SQUARE BOX WITH COVER, 19<sup>th</sup> Century, and Rose Medallion spoon dish.**

**371. ROSE MEDALLION SQUARE BOX WITH COVER, 19<sup>th</sup> Century.**  
Height 6 in.



**372. ROSE MEDALLION SPITTOON, circa 1860.**

**373. ENGLISH QUEEN ANNE MAHOGANY BEDSIDE CUPBOARD, 18<sup>th</sup> Century, with shaped gallery and carrying handles, recessed panel doors, legs terminating in pad feet. Height 30 in. Width 20 ½ in. Depth 17 in.**



**374. MICHELE GARINEI (ITALIAN 1871-1960) “PORTRAIT OF A GENTLEMAN AND HIS GUITAR”**, oil on canvas depicting a gent playing a six string acoustic guitar, signed upper right M. Garinei. 12 ¾ in. x 18 ¼ in.



**375. PAIR OF FINE ROSE MEDALLION VASES**, circa 1850, mounted as lamps with applied gilt foo lions and lizards. Height 18 ½ in.

**376. CONTINENTAL CHERRY INLAID TWO DRAWER CHEST**, circa 1790. Height 28 ½ in. Width 38 ½ in. Depth 21 ½ in.



**377. FOLK ART CARVED FIGURE OF NELSON**, 20<sup>th</sup> Century, holding an octant. Height 44 in.



**378. ELABORATELY INLAID MULTI-WOOD Sewing Box**, 19<sup>th</sup> Century, inlaid with multi-woods, and scenes on front and sides.





**379. ANTONIO JACOBSEN (NEW YORK/NEW JERSEY 1850-1921) “PORTRAIT OF THE CLIPPER SHIP ANNIE H. SMITH”**, oil on artist board, fully rigged on the open seas, signed and dated lower right Antonio Jacobsen, 1917. In as found condition in need of cleaning. 11 ½ in. x 19 ½ in.



**380. ENGLISH MAHOGANY CAMPAIGN STYLE SLANT FRONT DESK**, circa 1810, brass trimmed slanting lid exposing drawers and pigeon holes, two sections of tooled leather writing surface, 4 graduating drawers with recessed brass pulls on strapping, 4 large brass carrying handles on sides. Height 40 in. Width 37 in. Depth 18 in.



**381. KENNETH LAYMAN “FENCE”**, oil on canvas, signed. 82 in. x 69 in. Layman received his BFA from Rhode Island School of Design and MFA from Tulane University. He has taught at Newcomb College, Georgia State University and Wheelock College and is a former member of the Copley Society of Boston.



**382. ENGLISH BURL WALNUT CANTERBURY**, circa 1860, with one drawer, turned legs, brass cup casters.



**383. VINTAGE CIRCUS BANNER “CLOVER THE DANCING BEAR”**, circa 1920, painted on a loosely woven cloth canvas. 107 in. x 71 in.



**384. W. COMYNS & SONS EDWARDIAN MAHOGANY INLAID MECHANICAL POPUP DESK TABLE.**

Height 31 in. Width 24 ½ in. Depth 25 ½ in. Opened 47 ½ in.



**385. CONTINENTAL INLAID TWO DRAWER WORK TABLE**, circa 1800, the rectangular top inlaid with musical score, instruments and leaf vines, rounded drop leaves above two drawers, opposing side with two false drawers, bellflower inlaid square tapering legs. Height 29 in. Width 14 in. Depth 17 ½ in.



**386. VYOLA DE GRUCHY (20TH CENTURY) “THE HAPPY SMOKER”**, oil on canvas portrait of a very happy smoker, in period oak frame, signed lower right Vyola De Gruchy. 26 in. x 18 in.





**387. DUTCH MARQUETRY INLAID GAMES TABLE**, circa 1870, hinged rectangular top pivots and exposes a circular inserted felt with surrounding inlays. Height 30 ½ in. Width 30 ½ in. Depth 15 in.



**388. ENRICO GAMBA (ITALY 1831-1883) “THE GRAPE PICKER”**, watercolor on paper in original frame, signed lower left Gamba. 14 ½ in. x 9 in.



**389. JAMES CROMARTIE “THE DUNES”**, acrylic on canvas, signed lower right J. Cromartie. 22 in. x 32 in.



**390. REGENCY DUBLIN MAHOGANY AND SATINWOOD CABINET**, circa 1800, rectangular top with oval panel and line satin inlay, twin doors with oval tiger wood panels and quarter fans. Original cabinetmaker’s printed label “*M. Jones & Son Cabinet Makers, Joiners & Upholsterers, 10 Aston’s Quay*”. Height 36 in. Width 29 in. Depth 15 ½ in.



**391. ANACONDA WIRE & CABLE COMPANY SHIP'S BINNACLE,**

Heath & Co. LTD Compass, London, 10" diameter gimbaled (was liquid filled, empty now) Type K compass compensating coils, the World War II era binnacle having a removable brass hood with a glass port, the interior fitted with a brass wiring and instruction plate, brass plated flinders bar, black iron compensating balls. Height 53 ½ in. Width 36 in. Depth 17 in.

**392. SIEMENS BROTHERS OF LONDON SHIP'S BRASS TELEGRAPH,**

twin hammerhead design and independent handles. Ship's commands include: Hard, Port, Steady, Course, Steady, Starboard, hand written on one head and Let Go, Slack Away, Not Clear, Make Fast, Heave In, Stop Winch and All Clear on the other head. Height 43 ½ in. Width 17 in. Depth 15 in.

**393. UNITED STATES NAVY TYPE S COMPENSATING BINNACLE,** constructed of brass and copper, red and green compensating balls, made by E.S.Ritchie & Sons, Inc. Brookline, Massachusetts, circa 1920s. Height 57 in. Width 33 in. Depth 16 in.

**394. PAIR OF ENGLISH  
DERBYSHIRE JOINT CHAIRS,**  
17<sup>th</sup> Century, chip carved oak, block  
and turned stretchers.  
Height 41 in. Width 17 ½ in.  
Seat Height 17 in.



**395. CHINA TRADE PORTRAIT OF A YOUNG GIRL,** oil on canvas,  
19th Century. 18 ½ in. x 12 ¾ in.





**396. PAIR OF CHINESE EXPORT ARMORIAL PLATES**, circa 1795, with the Arms of McDonald & Forbes. Diameter 9  $\frac{3}{4}$  in.

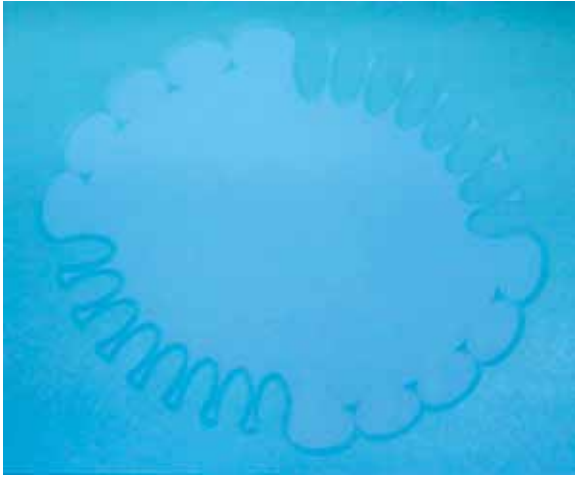


**397. HAND WOVEN SARAB CARPET**, circa 1920. 15 ft. 1 in. x 3 ft. 3 in.



**398. CHINESE MANDARIN TEAPOT**, circa 1830, decorated in high enamel paint with male and female figures with plants, garden stools and symbols. Height 4  $\frac{1}{2}$  in.

**399. CHINESE PORCELAIN TEAPOT**, circa 1830, lattice work decoration with floral cameos. Height 4 in.



**400. JANE HARRIS (ENGLISH B. 1956) “LIGHT RESISTER”,** acrylic on canvas.  
63  $\frac{3}{4}$  in. x 78  $\frac{1}{4}$  in.

Harris attended Bouremouth College of Art, Camberwell School of Art, Brighton Polytechnic, BA Fine Art, Slade School of Art, Goldsmiths College, MA Fine Art. Her works are in numerous collections including Arts Council of England, Birmingham Museum and Art Gallery, The Boise Collection, Brighton University, British Airways, Clarins, Colorado University Art Museum, Fidelity Worldwide Investments, Rhode Island School of Design Museum, SAKS, Fifth Avenue, Southampton City Art Gallery to name a few. **Provenance:** Hales Gallery.



**401. FINE WHALE IVORY SEAM RUB**, 19<sup>th</sup> Century, turned and scribed acorn handle on a scrimshawed wedge with two flags and anchor, the reverse with leaves and banner with letters “M. & N.”

**402. WHALEBONE SEAM RUB**, 19<sup>th</sup> Century, carved from a single piece with heart end, shaped grip and sharp wedge. Length 5  $\frac{3}{4}$  in.



**403. WHALE IVORY BODKIN**, circa 1850, hollow center with a gallery of hearts, columns and dots. Length 4 in.



**404. SAILOR SCRIMSHANDED POLYCHROMED WHALE TOOTH**, circa 1860, by the Naval Engagement artisan depicting a whale ship cooking by a pod of whales spouting and longboats on the water; the reverse a battle engagement of a British and two victorious American ships . Length 6 ½ in.



**405. EARLY SAILOR SCRIMSHANDED WHALE TOOTH**, 19<sup>th</sup> Century, a truly Folk Art piece. Crosshatched shadowing of a spouting sperm whale with two harpoons in flight. Length 6 ¾ in.



**406. WHALEBONE AND WHALE IVORY PIE CRIMPER**, circa 1850, double ivory zigzag wheels on a simple piece of bone carved with open hearts, blocks and wafers on a scroll with 2-prong fork (one missing). Length 9  $\frac{3}{4}$  in.

**407. DELICATE WHALEBONE PIE CRIMPER**, 19<sup>th</sup> Century, solid ivory zigzag wheel joined to a single piece of horn with heart spokes, the grip with two open columned sections, flanking a cinched section ending with a 3-prong fork. Length 9  $\frac{1}{2}$  in.



**408. SAILOR MADE WHALE IVORY SCRIMSHANDED PIE CRIMPER**, circa 1850, the grip finial is a clenched fist and cuff, mother of pearl inset name plaque, solid zigzag inset wheel ending in a fine two-prong fork, delicate floral vines throughout. Length 7 in.

**409. FINE SAILOR MADE WHALE IVORY AND ABALONE PIE CRIMPER**, circa 1850, delicate ring on a polyhedron grip with 12 surfaces inlaid with abalone circles, solid zigzag wheel. Length 4  $\frac{3}{4}$  in.





**410. SAILOR MADE WHALE IVORY AND WHALEBONE CANE**, circa 1860, C-shaped ivory grip in four sections with carved hatch at end, inlaid with baleen spacers on a tapering bone shaft, carved by the same hand as previous lot. Length 36 ¼ in.

**411. SAILOR MADE WHALE IVORY AND WHALEBONE CANE**, circa 1860, C-shaped ivory grip in four sections with carved hatch at end, inlaid with baleen spacers on a tapering bone shaft, carved by the same hand as previous lot. Length 36 ¼ in.

**412. A SOPHISTICATED AND EARLY SAILOR CARVED WHALEBONE ARCHITECTURAL WALKING STICK**, circa 1820, executed more for show than support; 5 column openwork, the interior a twisted rod encased by 4 reeded flat columns, flat knob grip. Length 31 in.

**413. SAILOR MADE WHALEBONE INLAID WALKING STICK**, circa 1850, ebony polished knob grip on a paneled bone stick with 72 abalone and tortoise circles, dots, diamonds, blocks and pie wedge. Length 33 ½ in.



**414. SAILOR SCRIMSHANDED WHALE TOOTH**, mid-19<sup>th</sup> Century, possibly by the Bank Note Engraver depicting a portrait of a clipper on green sea flying the American flag with clouds above and a tasseled banner and band cap surrounding the tooth tip; the reverse with a 3/4 portrait of a lady in fancy garb and lace hair cap with a red flowering vine above. Height 5 in.

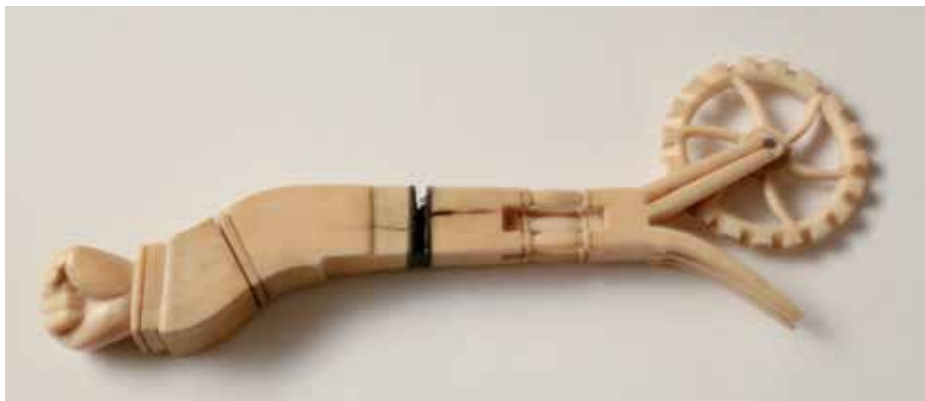


**415. WHALEBONE AND WHALE IVORY PIE CRIMPER**, circa 1850, three square wafer sections with fork carved of a single piece, solid ivory wheel. Length 8 in.

**416. SILVER INLAID WHALE IVORY PIE CRIMPER**, circa 1850, the grip in the form of a lyre with silver studs and silver diamond, small zigzag solid wheel. Length 6 1/4 in.



**417. SAILOR SCRIMSHANDED POLYCHROMED WHALE TOOTH**, circa 1840-50, “sporting” an urn with bird activity above a cameo of a gentleman hunter holding his game in a landscape with dogs; the reverse with crossed sabres and long rifles above a 21 starburst, over an eagle clutching a banner and shield with olive branches above a tent with soldier, cannonballs and twin cannons. Height 6 in.



**418. WHALE IVORY PIE CRIMPER**, circa 1850, six-spoke open Greek key wheel with 3-prong fork above 5 openwork columns, the grip in 2 sections joined by baleen and silver spacers, the end finial is a clenched fist. Length 8 ¼ in.



**419. GROUP OF THREE NAUGHTY LEG SAILOR MADE CANES AND POINTER**, late 19<sup>th</sup> Century, the largest a walrus ivory leg on a turned whalebone shaft with ebony spacers. Length 35 ½ in.

**420. SAILOR MADE WHALE IVORY AND ROSEWOOD ARCTIC EAGLE HEAD CANE**, circa 1870, ivory head with 23 alternating wood and ivory spacers on a rosewood shaft. Length 35 in.

**421. SAILOR MADE WHALE IVORY EAGLE HEAD CANE**, circa 1860, in two sections, the eagle with ball in mouth and scrimshawed head feathers on a tropical wood shaft. Length 33 ¼ in.

**422. SAILOR MADE WHALE IVORY AND WOOD TIGER WORM CANE**, circa 1860, 24 alternating ivory and wood spacers. Length 33 in.



**423. WHALE IVORY SERPENT PIE CRIMPER**, circa 1850, reversed directing open mouth serpent handle grip, joined with spacers to a turned standard ending in a fork (all three tines are missing), inserted with a solid ivory fancy wheel. Length 8 ¾ in.

**424. WALRUS IVORY PIE CRIMPER**, circa 1860, simple solid grip scrimshawed with a banner "*Lydia A. Chester*". Length 6 in.





**425. TWO SAILOR CARVED WHALEBONE AND WHALE IVORY CANE AND WALKING STICKS**, circa 1860, ivory “L” shaped grip with 5 wood and ivory spacers on a tapering twisted shaft; the lady’s walking stick with carved ivory paneled knob on a delicate paneled shaft, 2 reeded sections flanking a 4-line reeded twist. Lengths 37 ½ in. and lady’s 34 ½ in.

**426. RARE WHALE IVORY AND WHALEBONE DEACON’S STAFF**, circa 1850, ivory mushroom scribed grip on a paneled bone shaft stepping down to a turned shaft. Length 50 in.

**427. SAILOR MADE WHALEBONE AND WHALE IVORY WALKING STICK**, circa 1840, an ivory multi-turned mushroom knob on a paneled and turned bone shaft, two inlaid silver grommets. Length 34 in.

**428. SAILOR MADE WHALE IVORY AND WHALEBONE WALKING STICK**, circa 1870, a whale ivory light bulb form grip on a whalebone twisted and hatched shaft. Length 35 in.

**429. SAILOR CARVED WHALEBONE AND WHALE IVORY WALKING STICK**, circa 1860, flat top ivory stepped down grip with ebony spacers on a carved whalebone stick with panels, reeding, twist, blocked and turned. Length 32 ½ in.



**430. SAILOR SCRIMSHANDED WHALE TOOTH**, circa 1850, engraved with the Arno River and bridges and surrounding architecture of Florence, Italy. Height 6 in.



**431. SAILOR SCRIMSHANDED WHALE TOOTH**, 19<sup>th</sup> Century, full portrait of an American Indian wearing headdress, blanket and holding long rifle. Length 7 ¼ in.

**432. SAILOR SCRIMSHANDED WHALE TOOTH**, circa 1840, engraved with deep eyed woman wearing a hat and purse in hand made fashion, standing before a stone wall. Height 6 in.



**433. SAILOR SCRIMSHANDED WHALE TOOTH**, circa 1850, polychromed  $\frac{3}{4}$  portrait of a lady with black ringlet hair, wearing a fancy hat, fur fashion and necklace. Height 6 in.



**434. SAILOR SCRIMSHANDED WHALE TOOTH**, circa 1850, a sampler example experimenting with different techniques, this sketch pad tooth shows images of a horse, cat, tiger, potted plant, mantle clock, race horse and jockey and stippled portrait. Height 5  $\frac{3}{4}$  in.



**435. SAILOR SCRIMSHANDED POLYCHROMED WHALE TOOTH**, circa 1840, mother and daughter cutting flowers with pet dog nearby and wraparound landscape. Height 6  $\frac{1}{2}$  in.

**436. SAILOR SCRIMSHANDED WHALE TOOTH**, circa 1840, full portrait of sisters in full dress holding flower sprigs. Height 6  $\frac{1}{2}$  in.





**437. SAILOR SCRIMSHANDED WHALE TOOTH**, circa 1830, full portrait of a high fashioned lady holding purse and flower stem; the reverse with a stern view of a square rigged American gunboat. Height 7 in.



**438. SAILOR SCRIMSHANDED WHALE TOOTH**, circa 1860, a  $\frac{3}{4}$  portrait of a lady wearing a silk dress, feathered hat and holding a plum in her left hand, slight polychroming on base of dress; the reverse engraved with woman with beads in her hairdo, wearing a high neck dress with slight polychroming at the base, standing on a parquet floor. Height 7  $\frac{1}{2}$  in.



**439. SAILOR SCRIMSHANDED WHALE TOOTH**, 19<sup>th</sup> Century, portrait of an American square rigged three-mast clipper at sea with a shielded eagle with sprigs above; the reverse with a 5-point star within a star above a spread winged eagle clutching arrows and twin polychromed American flags above foliage. Height 7 ½ in.



**440. WHALE IVORY PIE CRIMPER**, circa 1840-1850, pistol shaped grip with two block carvings supporting a fork holding a pierced spoke zigzag wheel. Length 5 ¼ in.

**441. TORTOISE SHELL AND WHALE IVORY “S” FORM PIE CRIMPER**, circa 1840-1850, star spoke wheel with dots supported by a tortoise fork and inlaid grip. Length 6 in.



**442. SAILOR SCRIMSHANDED WHALE TOOTH**, circa 1830, engraved with female in an interior, flowers by table and birdcage; the reverse with a formal country estate cameo surrounded with strong foliage engravings. Height 5  $\frac{3}{4}$  in.



**443. SAILOR SCRIMSHANDED WHALE TOOTH**, circa 1870,  $\frac{3}{4}$  portrait of a young lady. Height 5  $\frac{1}{2}$  in.

**444. SAILOR SCRIMSHANDED WHALE TOOTH**, 19<sup>th</sup> Century, portrait of a lady wearing shawl reading a book in front of a curtain, deep scribed initials "C.W.J.", the reverse with unfinished portrait. Height 5  $\frac{3}{4}$  in

**445. SAILOR SCRIMSHANDED WHALE TOOTH**, 19<sup>th</sup> Century, full portrait of a fully equipped knight with lance separating him from a young lady. Height 7  $\frac{1}{2}$  in.



# Notes:

## **ARTIST INDEX:**

Solon Francis Montecello Badger (1873-1919) pg 15

Doris Riker Beer (1898-1967) pg 50

Thomas Hart Benton (1889-1975) pg 10

N. Bowers (19<sup>th</sup> Century) pg 3

Thomas Brooks (1818-1891) pg 133

James E. Buttersworth (1817-1894) pg 96

Ralph Eugene Cahoon Jr. (1910-1982) pgs 77, 78, 79, 81

Frank Swift Chase (1886-1958) pg 8

China Trade pgs 51, 58, 142, 157

Oliver Clare (1853-1927) pg 31

Vincent Clare (1855-1930) pg 32

James Cromartie (b.1944) pg 155

Vyola De Gruchy (20<sup>th</sup> Century) pg 153

I.F.W. Des Barres (18<sup>th</sup> Century) pg 72

Antonio De Simone (1851-1907) pg 65

Armand Godard (19<sup>th</sup>/20<sup>th</sup> Century) pg 135

J. Evans (19<sup>th</sup> Century) pg 51

James Walter Folger (1851-1918) pgs 67, 68

Enrico Gamba (1831-1883) pg 154

Michele Garinei (1871-1960) pg 148

Jack Lorimer Gray (1927-1981) pgs 115, 116, 117

Samuel W. Griggs (1827-1898) pg 123

Jane Harris (b. 1956) pg 159

P. Hunt (19<sup>th</sup> Century) pg 121

George Inness (1825-1894) pg 54

Antonio Jacobsen (1850-1921) pg 150

Julio Larraz (b. 1944) pgs 80, 84

Kenneth Layman (20<sup>th</sup>/21<sup>st</sup> Century) pg 151

Richard Loud pg 101

Wendell Macy (1845-1813) pgs 59, 60

William Ferdinand Macy (1852-1901) pg 4

Emmanuel Maris (19<sup>th</sup> Century) pg 20

Gary Mauro (20<sup>th</sup> Century) pg 144

Jan Munro (20<sup>th</sup>/21<sup>st</sup> Century) pg 18

William Paskell (1866-1951) pg 86  
A. Rauter (19<sup>th</sup> Century) pg 140  
Benjamin Russell (1804-1885) pg 11  
Victor Scharf (1872-1943) pg 22  
Michael Sherlingh (1893-1943) pg 104  
Joseph Whiting Stock (1815-1855) pg 43  
Tim Thompson (b. 1951) pg 71  
Clark Voorhees (1911-1980) pg 14  
Thomas Willis (1850-1925) pgs 28, 91, 94, 95

### **NANTUCKET BASKETS:**

William Appleton (1851-1918) pg 55  
Sherwin Boyer (1907-1964) pg 3  
O.C. Coffin (19<sup>th</sup> Century) pg 99  
José Formoso Reyes (1902-1980) pg 126  
Ferdinand Sylvaro (1868-1952) pg 93

Fine Art from the Egan Maritime Institute to be sold to benefit their *Sea of Opportunities* program. A partial listing of the Fine Art to be included in our forthcoming addendum to the August 1st auction include:

Clifford W. Ashley  
James F. Barker  
Doris Riker Beer  
Rodney Charman  
Anton Otto Fischer  
James Walter Folger  
James S. Hathaway

The Institute's mission is to create a bridge between Nantucket's historical connection with the sea and today's young Nantucketers, enriching their future professional and personal lives by exposing them to maritime traditions, trades, and sciences. In collaboration with the Nantucket Public Schools, Nantucket Lighthouse School, and Nantucket New School, the Egan Maritime Institute has the chance to engage approximately 750 middle and high school age students.





# **RAFAEL OSONA AUCTIONS**

## **ABSENTEE BID FORM**

Please read the Conditions of Sale. By signing this form, the bidder agrees that all purchases are subject to the Conditions of Sale. Only completed forms with signature will be considered valid.

TERMS: Cash or Good Check; An 19% Buyer's Premium will be added to the hammer price to be paid by the buyer as part of the purchase price.

OFFERINGS SUBJECT TO ERROR; ALL GOODS SOLD "AS IS", ALL SALES FINAL. Absentee bids are executed as a courtesy, and Rafael Osona Auctions will not be responsible for any errors or failure to execute bids.

Name (please print)\_\_\_\_\_

Street\_\_\_\_\_

City\_\_\_\_\_ State\_\_\_\_\_ Zip\_\_\_\_\_

Driver's License#\_\_\_\_\_ State\_\_\_\_\_ Exp\_\_\_\_\_

Email\_\_\_\_\_

Phone#\_\_\_\_\_ Cell#\_\_\_\_\_

### **SPECIAL SHIPPING (and or) DELIVERY INSTRUCTIONS:**

All purchases whether in person, phone bids or absentee bids must be picked up by 5:00pm the day of the sale, or arrangements must be made for on-island delivery or off-island shipping.

☐ I will pick up my purchases by 5:00pm the day of the sale

☐ I want my purchases shipped off-island by The Mainland Connection (508) 228-5229

☐ I want my purchases delivered on-island

**BID FORMS MAY BE FAXED, PHONED OR EMAILED TO:**

**Tel. (508) 228-3942**

**Fax (508) 228-8778**

**info@RafaelOsonaAuctions.com**

**www.RafaelOsonaAuctions.com**



LOT NO.	ITEM DESCRIPTION	MAX. BID	+1

SIGNATURE \_\_\_\_\_ DATE \_\_\_\_\_

PRINT NAME \_\_\_\_\_

**Please return signed copy to confirm your bids by fax, mail, telephone or in person. Absentee bids must be submitted by 5:00 pm the day before the sale.**

