

THE MICHAEL J. KITTREDGE COLLECTION

JULY 13 AT 9:30AM

PREVIEW JULY 11-12 FROM 10AM-5PM



AT THE
AMERICAN LEGION
21 WASHINGTON ST.
NANTUCKET

MICHAEL J. KITTREDGE II ESTATE “ACKLANDIA” AT 72 & 78 POCOMO ROAD, NANTUCKET

Inspired by the handmade candle he crafted for his mom from melted crayons, a teenage Michael Kittredge founded Yankee Candle Company in his parent’s garage in 1969. A Holyoke native, well-known entrepreneur and self-made man, Kittredge sold 90% of his candle company 29 years later for \$500 million.

The Kittredge Foundation supports The Dana-Farber Cancer Institute, Cooley-Dickinson Hospital, Brigham and Women’s Hospital, Nantucket Cottage Hospital, Holyoke Community College, the Bement School, Amherst Montessori School... and many others. In addition, in 2012 Lisa Kittredge founded Sounds of Recovery, a not-for-profit advocacy organization for the music therapy community.

Committed wine enthusiasts, and extraordinarily magnanimous hosts, the Kittredges welcomed 24 privileged guests annually to lavish Great Wines in Grand Houses dinners in support of the Nantucket Wine Festival – together celebrating and experiencing many of the world’s finest wines. The Pocomo Road compound’s wine cellar housed 3500 bottles, benchmarked perhaps by the ’82 Mouton Rothchild; Baron Philippe’s 60th harvest with its John Huston watercolor label.



THE MICHAEL J. KITTREDGE COLLECTION AUCTION

SATURDAY JULY 13, 2019 AT 9:30AM

EXHIBITION

THURSDAY, JULY 11 10AM-5PM

FRIDAY, JULY 12 10AM-5PM

PROVENANCE

FURNISHINGS FROM "ACKLANDIA"

72 AND 78 POCOMO ROAD

NANTUCKET ISLAND

BID ONLINE AT BIDSQAURE.COM

BID LIVE IN SHOWROOM, ABSENTEE AND TELEPHONE

AT THE

AMERICAN LEGION HALL, 21 WASHINGTON STREET
NANTUCKET ISLAND, MASSACHUSETTS

RAFAEL OSONA
AUCTIONEER & APPRAISER

PO Box 2607, NANTUCKET, MA 02584

LIC. 366

TEL. 508-228-3942

FAX 508-228-8778

INFO@RAFAELOSONAAUCTIONS.COM

WWW.RAFAELOSONAAUCTIONS.COM

THE MICHAEL J. KITTREDGE COLLECTION

1



Folk Art Carved and Painted Wood Nantucket Banner with ribbon-like ends Length 72 in.
500/600

2



19th Century English Petite Copper Carrying Lantern 150/200

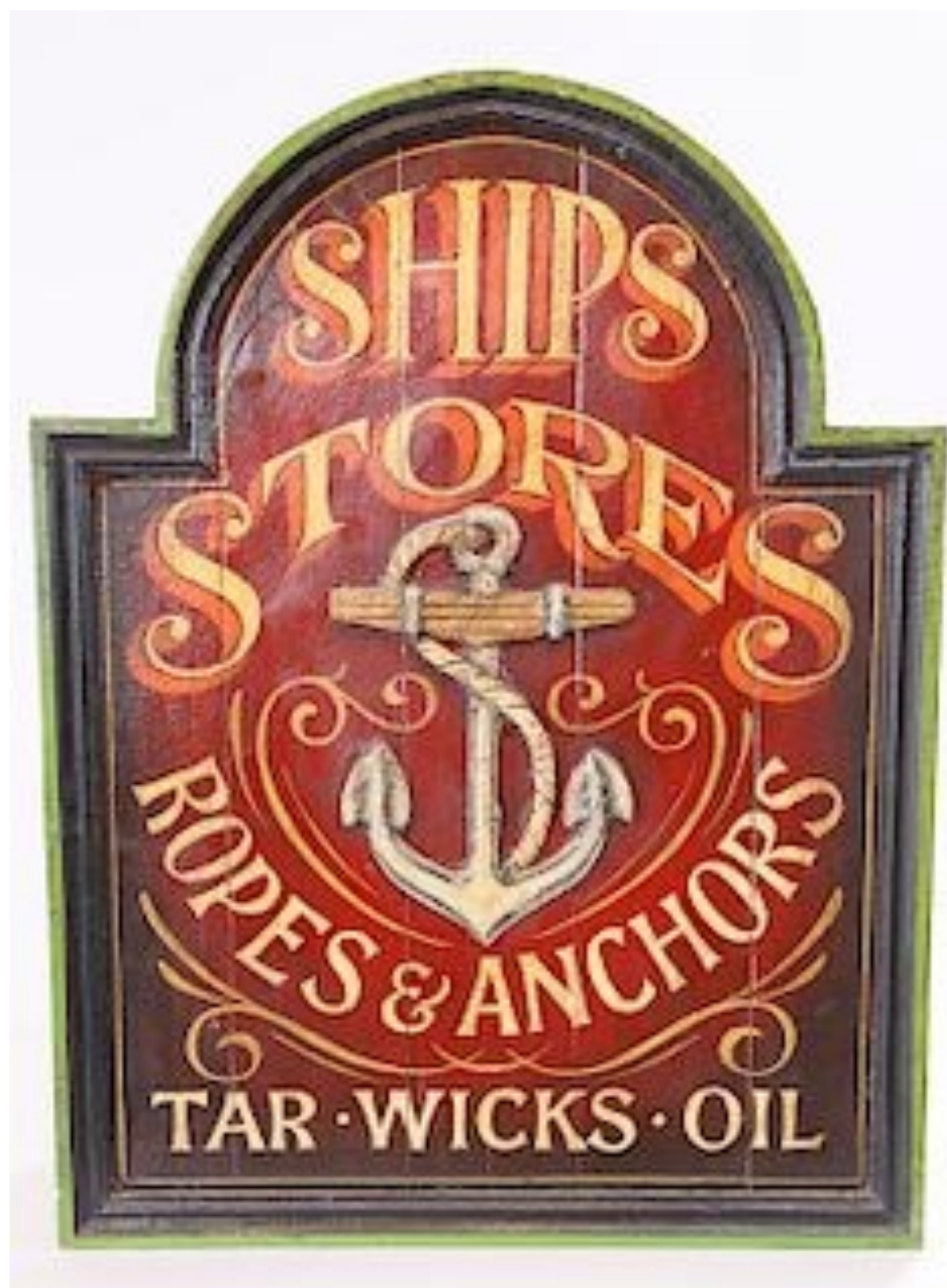
3



19th Century Mahogany Cross-Banded Hanging Candle Box with satin wood diamond inlay on lid

300/500

4



Antique Style Painted Wood Trade Sign *Ship's Stores, Ropes and Anchors*

300/500

5



Late 18th Century Burlwood Dodecagon Top Tripod Candlestand Ending in Snake Feet, vase turned standard Height 27 ½ in. 300/500

6



16 Christofle Silver Plated Place-Card Holders in the form of a dolphin

500/700

7



Four Polished Aluminum Champagne Split Chillers 250/350

8



Giovani Patrini Per Aetna Champagne Ice Bucket with 8 applied lobsters surrounding the rim. Height 11 ¾ in.

500/700

1

THE MICHAEL J. KITTREDGE COLLECTION

9



Pair of Antique English Burlwood Three-Drawer Chests of Drawers on bracket feet Height 27 ½ in. Width 16 ¼ in. Depth 18 in.
500/700

10



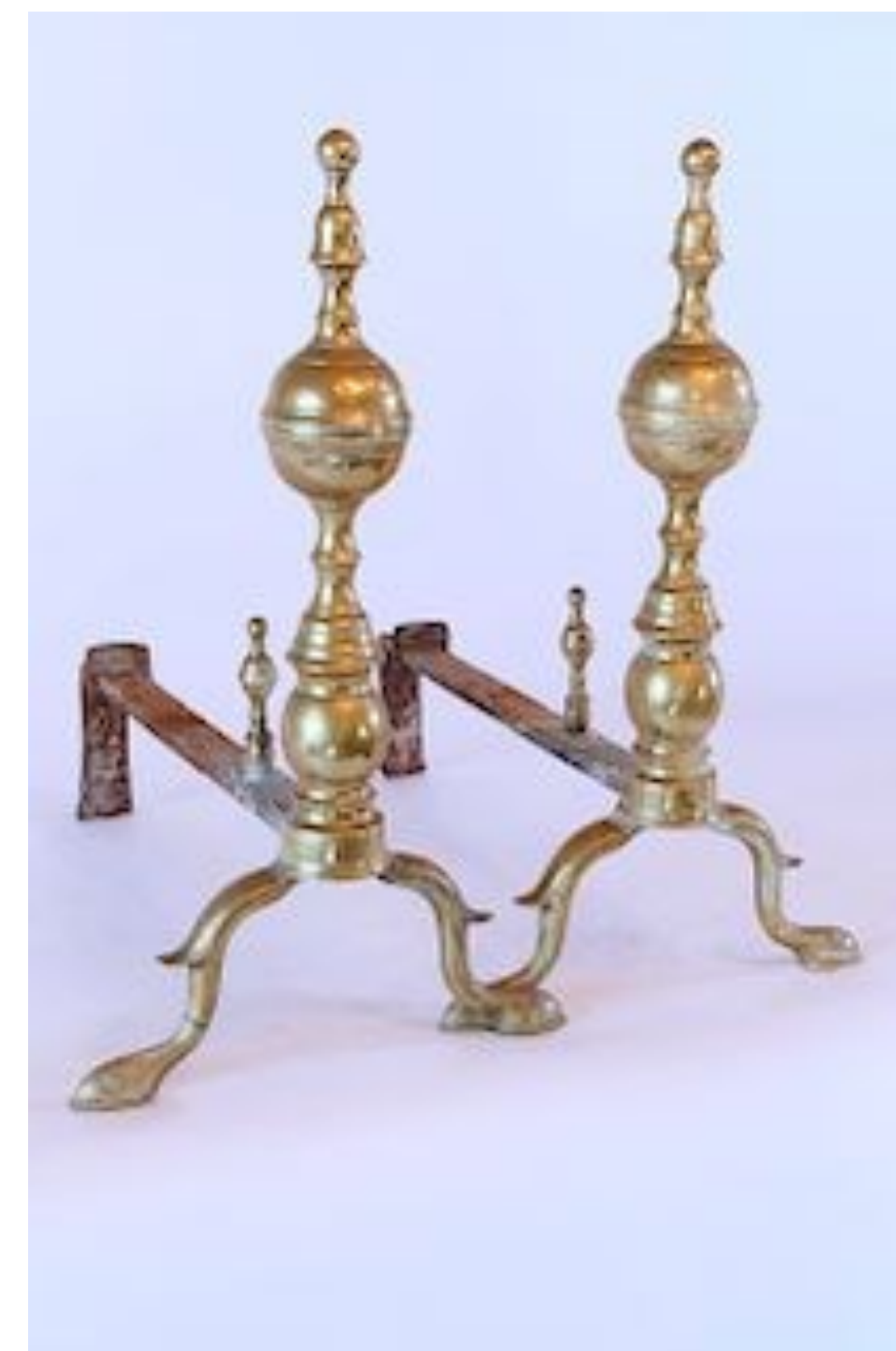
Three P. Solet Laminated Multi-Layer Wood Whale Fluke Stools, signed P. Solet, 2007
Height 17 in. (two pictured) 600/1,000

11



P. Solet Large Multi-Wood Laminated Whale Fluke Stool
Approximate Height 36 in.
300/500

12



19th Century Finial Ball Top Brass Andirons, on arched spurred legs with matching log stops
200/400

13



Four Gloster Teak Armchairs with blue and white cushions and two large round cocktail tables
800/1,200

14



19th Century English Tiger Maple Candlestand with green leather inserted top, on turned standard with tripod curved down swept legs
800/1,000

15



Broadloom Kaleidoscope Pattern Carpet
7 ft. 11 in. x 5 ft. 11 in.
300/500

16



19th Century English Bird's Eye Maple Fifteen-Drawer Apothecary Chest
Height 42 in. Width 31 in. Depth 12 in.
800/1,200

THE MICHAEL J. KITTREDGE COLLECTION

17



Trinity House Miniature Inlaid British Gun-Boat Plaque, 19th century
250/350

18



Pair of L.E. Partridge Bowback Windsor Armchairs
400/600

19



English Hand Painted "Rye Ballooning Club, 1889" Style Trunk Height 20 in. Width 39 ½ in. Depth 24 in.
300/400

20



Tiger Maple Queen Anne Style, Pie Crust Top, Birdcage Tilting Candlestand on turned standard
Height 30 in. Diameter 26 in.
600/800

21



D.R. Dimes Pine and Cherry Child's Bow Back Windsor High Chair Approximate Height 35 in.
300/500

22



Hand Painted Nautical Board Depicting Compass, Clipper Ship, Sailboat, Lighthouse, Whales and Homestead
Height 61 in. Width 11 ½ in.
400/600

23



Antique English Pine Two-Door Wardrobe. Height 75 in. Width 54 in. Depth 16 in.
500/700

24



Pair of Poured and Molded Sea Serpent Garden Water Fountains. Approximate Height 14 in.
250/350

THE MICHAEL J. KITTREDGE COLLECTION

25



Jan Pawlowski (Poland/ Massachusetts b. 1949) Oil on Canvas
"View of the Town of Nantucket from Monomoy" signed lower right Jan Pawlowski, carved gold leaf frame.
 30 in. x 40 in. 5,000/7,000

26



Creme Broadloom Carpet with Green and Blue Snowflakes Central Pattern, Green Border
 11 ft. x 16 ft. 3 in. 400/600

27



19th Century English Three-Drawer Pine Dressing Table
 Height 30 in. Width 45 in. Depth 16 in. 400/600

28



Antique Style Patriotic Painted Wood Barber's Pole
 Height 60 in. 200/400

29



Pair of 19th Century Double Dolphin and Finial Brass Andirons Height 13 in. Depth 16 in. 300/500

30



Marble Top Bistro Table and Pair of D. R. Dimes Windsor Bow Back Side Chairs with Tie Seat Cushions 500/700

31



Marble Top Bistro Table and Pair of D. R. Dimes Windsor Bow Back Side Chairs with Tie Seat Cushions 500/700

32



Tiger Maple Pencil Post King Bed
 Height 86 in. Width 84 in. 600/800

THE MICHAEL J. KITTREDGE COLLECTION

33



Pair of 19th Century French Porcelain Enamel Scallop Shell Seafood Restaurant Advertising Trade Signs,
3- Dimensional. Height 23 in. Width 24 in. Depth 7 in.
400/600

35



George Nemethy (b. 1952) Oil on Board "Schooner"
initialed lower left. 5 ¾ in. x 4 ½ in. Overall 13 in. x 12 in.
500/700

37



19th Century English Elmwood Spool Leg Corner Chair
400/600

39



Antique Tin Repoussé Plaque of Bacchus
and young woman holding a cluster of grapes, in gilt
frame. Bacchus was the Roman God of agriculture, wine
and fertility.
28 ½ in. x 53 in. 800/1,200

34



Pair of 19th Century English Walnut Barley Twist Pedestals
Height 34 in. 400/500

36



19th Century Pond Model
red painted and natural wood
stained hull, and canvas sails
Height 76 ½ in. Length 67 ½ in.
800/1,000

38



Antique English Pine Petite Two-Door Armoire on Bun Feet
Height 74 in. Width 36 in. Depth 18 in.
500/700

40



Marshall James (Greensboro, North Carolina) Tiger Maple Chippendale Style Four-Graduated Chest of Drawers on Bracket Feet with brass post and bail hardware.
Height 32 in. Width 32 ½ in. Depth 18 in. 1,200/1,500

THE MICHAEL J. KITTREDGE COLLECTION

41



**Brass Carrying or Diving
Lantern** Height 19 ½ in.
400/600

42



**19th Century English Pine
Stand** with single door
Approximate Height 28 in.
200/300

43



**Rare Coast Guard Service Post Beacon
Lantern "B" with Fresnel Glass Lens**
Height 31 in.
1,000/1,500

44



**Solid Brass Perko Perkins Marine
Lantern** with Fresnel Glass Lens
Height 24 in.
200/300

45



**English Pine Hutch, 19th
century**, beaded backboards,
three shelves over 7 drawers,
over 4 drawers, over slatted
poultry bin. Height 87 in.
Width 78 ½ in. Depth 19 in.
1,200/1,500

46



Pair of Antique English Pine Three-Drawer Chests with
post and bail brass hardware on bracket feet
Height 29 in. Width 32 in. Depth 17 in.
800/1,000

47



**Antique Style Wooden Trade Sign "Royal Naval School of
Navigation"** flanked by sea serpents
Height 52 in. Width 63 in.
1,000/1,200

48



**Needlepoint Carpet in a Seaweed and Starfish Pattern with
Scallop Shell Border** 12 ft. 1 in. x 9 ft.
700/900

THE MICHAEL J. KITTREDGE COLLECTION

49



Gilded Shell Decorated Console Table
Height 32 in. Width 38 in. Depth 14 ¼ in.
300/500

51



English Child's Elm Bowback Windsor Armchair
Height 25 in.
200/400

53



Pair of Bradley & Hubbard Brass Dolphin Andirons,
signed Bradley & Hubbard
Height 16 in. Depth 18 in.
300/500

50



2008 Mini Cooper Clubman 5-Door Station Wagon, Sparkly Silver Metallic exterior, chocolate brown leather seating with creme piping, standard transmission, 7617 miles.
7,000/10,000

52



Custom American Chippendale Style Tiger Maple Wardrobe Cabinet with two doors over four graduated drawers on ogee bracket feet. Height 75 ½ in. Width 43 ½ in. Depth 24 in.
1,500/2,500

54



Pair of Early 19th c. French Brass Armillary Spheres on Turned Wood Bases, Manufactured by "A. Paris Chez G. Gobille. Approximate Height 12 in.
3,000/5,000

THE MICHAEL J. KITTREDGE COLLECTION

55



19th century English Burlwood Six-Drawer Apothecary Chest on stand with four single drawers, one double drawer and one triple drawer. Height 40 in. Width 21 ½ in. Depth 11 ½ in.
1,000/1,500

56



19th Century English Cast Iron and Gilt Decorated Royal Lion. Height 13 ½ in. Length 27 ½ in.
400/600

57



Four Walnut Upholstered Bar Height Armchairs
800/1,200

58



Vintage Pond Model
300/500

59



Four Walnut Upholstered Bar Height Armchairs
800/1,200

60



Salvatore Colacicco (Italian b. 1935) Oil on Board "Nantucket Harbor as Depicted in the 1850s", signed lower left Salvatore Colacicco, molded gilt frame. 31 ½ in. x 52 ¾ in. Overall 40 ½ in. x 62 in.
5,000/7,000

61



19th Century English Scrubbed Pine Seventeen Drawer Apothecary Chest.
Height 30 in. Width 52 in. Depth 10 ½ in. 800/1,200

62



"T. Merrill & Sons, New York" Brass and Copper Illuminated Yacht Binnacle Compass, 19th century, re-fitted as an electric table lamp
1,500/2,500

THE MICHAEL J. KITTREDGE COLLECTION

63



Asian Green Patina Brazier with three applied lion's heads. Diameter 30 in.

250/350

64



Pair of Gloster Teak Settees with Blue and White Striped Cushions together with 2 Square Side Tables

Gloster Teak Sofa with Blue and White Cushions
Length 80 in.

Gloster Teak Round Cocktail Table

Diameter 40 in.

1,000/1,500

65



Folk Art Board with applied fids and mallet and painted rope edge border. Length 36 in.

500/700

66



Pair of 19th Century English Oak Apothecary End Tables Chests, 9-drawers each, on bracket feet, brass pull hardware.
Height 24 ½ in. Width 27 in. Depth 16 in.

700/900

67



Jan Pawlowski (Massachusetts/Poland b. 1949)
Oil on Canvas "Sailboats Moored in Polpis Harbor", signed lower right Jan Pawlowski '98, gilt frame. 30 in. x 40 in. Overall 38 in. x 48.5 in.

5,000/7,000

68



Mahogany Butler's Tray Cocktail Table with brass inset carrying handles, satinwood inlaid stars and curio glass midsection
Height 16 in. Width 47 in. Depth 31 ½ in.

700/900

69



Navy Blue and Creme Broadloom Carpet with Leafy Vine Border and star patterned central field.

9 ft. 6 in. x 7 ft. 11 in.

400/600

70



Pair of Cast Bronze Gangway Plaques, 19th Century, sunburst with stars and American flags emanating from a Federal shield above crossed cannons, above "*E. Pluribus Unum*" banner, all within a rope border.
Height 62 in. Width 18 in.

8,000/10,000

THE MICHAEL J. KITTREDGE COLLECTION

71



Pair of Carved and Gilt Wood Scallop Shells by J.P. Uranker, Martha's Vineyard
150/250

72



19th Century English Oak Kneehole Desk, 11 drawers, leather insert top on bun feet.
Height 33 in. Width 60 ½ in. Depth 28 in.
1,000/1,500

73



Four Gloster Teak Armchairs with Blue and White Cushions and 4 Round Teak Side Tables
800/1,200

74



Reginald Nickerson (Massachusetts 1915-1999) Oil on Canvas "Portrait of the Four-Mast Schooner Isaiah Hart", flying the American flag, owner's pennant, burgees, crew on deck, signed lower right R.E. Nickerson.
2,000/3,000

75



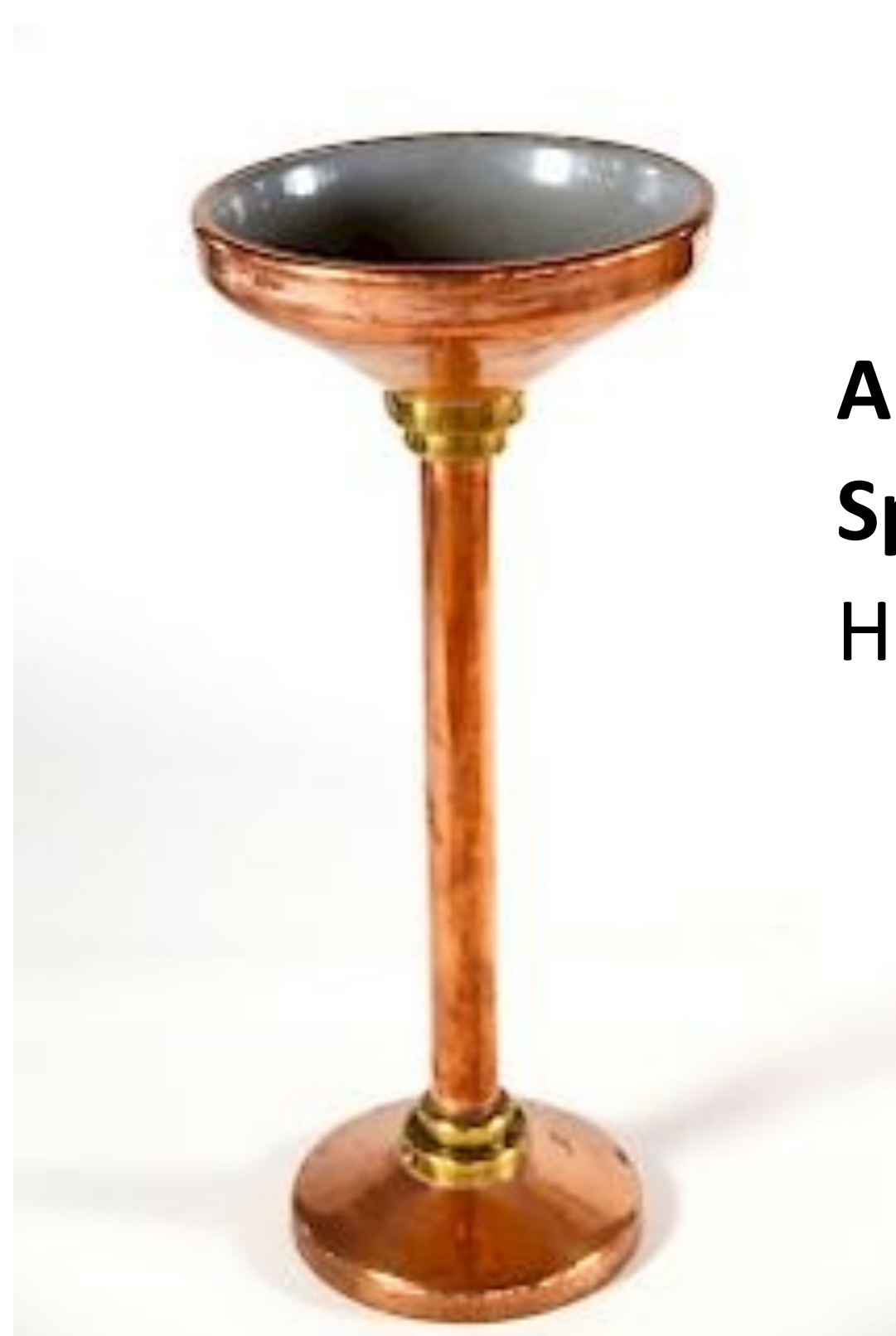
2009 White Smart Car Fortwo Passion Convertible with 4409 Miles.
7,000/10,000

76



Paul Longnecker (1920-2008) Oil on Board "Nantucket's North Wharf" signed lower left Paul Longnecker, unframed.
16 in. x 20 in.
700/900

77



Antique Copper Wine Tasting Spitting Vessel
Height 32 ½ in. Diameter 14 in.
400/500

78



19th Century 32-Drawer Apothecary Cabinet in old blue paint on low bracket feet. Height 38 ½ in. Width 40 in. Depth 12 in.
1,200/1,500

THE MICHAEL J. KITTREDGE COLLECTION

79



Carved and Gilt "Nantucket" Black Painted Quarterboard with whale fluke ends.

Length 63 ¼ in.

400/600

81



Antique Ship's Brass Window Teak Wood Coffee Table. Height 18 ½ in. Length 29 in.

Depth 21 in.

500/700

83



John Charles Terelak (New York/Massachusetts b. 1942) Oil on Canvas "Nantucket Street Scene"

signed lower right J.C. Terelak. 24 in. x 26 in.

Overall 32 in. x 34 in.

2,500/3,500

85



Douglas Partridge Dimes Chippendale Style Tiger Maple Secretary Bookcase, the upper broken-arched pediment and finial over 2-arched doors

which open to reveal pigeon holes and 3-drawers; slanted lid drops to reveal 11 drawers and pigeon holes over 4-graduated drawers on bracket feet; Signed June 1994 Douglas Partridge Dimes, Hand Made for Michael J. Kittredge Height 89 in. Width 35 in.

Depth 21 in.

3,000/5,000

80



Brian Coole (United States/United Kingdom b. 1939) Oil on Board "Luminous Boston Harbor Sunset" signed lower left

Brian Coole in gilt embossed frame. 19 in. x 29 ½ in.

2,000/4,000

82



John Charles Terelak (New York/Massachusetts b. 1942) Oil on Canvas "Nantucket Morning Street Scene" signed lower right J.C. Terelak, 1978

24 in. x 30 in. Overall 32 in. x 38 in.

2,000/3,000

84



Walnut Backless Bench with Curved Arms, turned legs and "H" stretcher base, upholstered in red and white plaid fabric

Height 27 in. Width 22 ½ in.

250/350

86



19th Century Compass Rose and Federal Shield Inlaid Wood Box

400/600

THE MICHAEL J. KITTREDGE COLLECTION

87



"Louis Weule Co. Nautical Instruments, San Francisco, California" Brass Pedestal Yacht Binnacle Compass, engraved "Onward III"
Height 36 in.

2,000/2,500

88



Pair of 19th c. Pierced Brass Round Carrying Lanterns with lift top pierced lid, door and handle. Height 8 ¼ in.

300/500

89



"Meteorite C24821" Copper Masthead Ship's Lantern, with label "Patent 546575 and Others Pending". Height 28 in.

300/500

90



Green-Teal Leather Chesterfield Style Sofa, rolled arms on bun feet, modeled after the classic British Chesterfield with hand tacked nail-head trim. Length 79 in.

1,000/1,500

91



Green-Teal Leather Chesterfield Style Sofa, rolled arms on bun feet, modeled after the classic British Chesterfield with hand tacked nail-head trim. Length 79 in.

1,000/1,500

92



Green-Teal Leather Chesterfield Style Sofa, rolled arms on bun feet, modeled after the classic British Chesterfield with hand tacked nail-head trim
Length 79 in.

1,000/1,500

93



Folksy Oil on Canvas of Three Sailors at Shore's Edge, anchor, rope and British Flag carved and painted frame
Overall 32 ½ in. x 48 in.

1,000/1,200

94



19th Century English Teak Wood Slant Lid Trunk with long sculpted brass hinges and recessed brass ring pull. Height 22 in. Width 27 in. Depth 19 in.

300/500

THE MICHAEL J. KITTREDGE COLLECTION

95



Tim Thompson (English b. 1951) Oil on Canvas
"Parade of Sail", signed lower right Tim Thompson, gold leaf carved frame. 16 in. x 20 in. Overall 22 in. x 26 in.
 6,000/10,000

96



19th Century English Oak Spool Leg Bench with yellow seat cushion
 Height 19 in. x Length 59 ½ in. x Depth 12 in.
 800/1,200

97



E.S. Ritchie & Sons, Boston
Brass and Teak Binnacle Compass, Pat. Mar. 2, 1920 #76377
 Height 33 ½ in.
 800/1,200

98



Marble Top Bistro Table and Pair of D. R. Dimes Windsor Bow Back Side Chairs with tie seat cushions
 500/700

100



"Monopoly" Pinball Machine
 Manufactured by Stern Pinball, Inc.
 2,000/3,000

99



Marble Top Bistro Table and Pair of D. R. Dimes Windsor Bow Back Side Chairs with tie seat cushions
 500/700

101



"No Fear" Pinball Machine by The Williams Electronic Games, Inc., circa 1995
 2,000/3,000

102



"The Shadow" Pinball Machine by the Midway Manufacture Company, copyright 1994 the game designed by Brian Eddy and released by Midway is based on the 1994 movie of the same name. Manufactured March 7, 1995
 2,000/3,000

THE MICHAEL J. KITTREDGE COLLECTION

103



"Austin Powers"
Pinball Machine by
the Stern Pinball
Co., Inc.

2,000/3,000

104



Baltimore Skipjack Model "America 1851"

300/500

105



Willie Holt Burnley Ltd Diminutive English Mahogany Billiards Table with "Willie Holt Burnley LTD Billiard Works, Championship Cushions, 12 Hyde Street W.C." tag affixed to frame
Height 33 in. Length 76 ½ in. Width 40 ¾ in.

1,000/1,500

106



18th Century Scottish Portrait of a Gentleman Billiard Player. Approximately 30 in. x 20 in.

800/1,200

107



Custom Broadloom Carpet designed with a map of Nantucket, whales, lighthouses, and Nantucket Baskets
12 ft. 10 in. x 12 ft. 11 in.

1,200/1,800

108



Pair of "Southwood" 5-Leg Chairs upholstered in blue chenille fabric

700/900

109



Large Copper and Brass Maritime Beacon with Fresnel Lens probably from a buoy light.

Approximate Height 38 in.

2,500/3,500

110



Virginia M. Greenleaf Oil on Canvas "Easter Hare"
initialed lower left "VMG" and signed, titled and dated on reverse of canvas '89. 25 in. x 25 in.

700/900

THE MICHAEL J. KITTREDGE COLLECTION

111



World War II Cast Iron Painted Royal Navy Coat-of-Arms Presentation Plaque, presented by the Lords Commissioners of the Admiralty to St. Thomas Rural District Council to commemorate the adoption of H.M.M.G.B.52, H.M.S. Jasmine, H.M.S. Polruan and H.M.M.T.B.92 during warship weeks 1941-42.
Height 33 in. Width 20 in.

500/700

113



Pair of 19th Century English Upholstered Flame Stitch Footstools on turned mahogany legs with red gimp trim
400/600

115



K. Kelliher Oil on Quarterboard "Great Point, Nantucket", signed lower right K. Kelliher. 5 ½ in. x 36 in.
300/500

117



Carved Mahogany Half-Body Sperm Whale Plaque by the North Atlantic Sea Chest Company
Length 26 ½ in. 200/300

112



Pair of 19th C. English Black Stained Pine One-Drawer Over Two-Door Side Cupboards 700/900

114



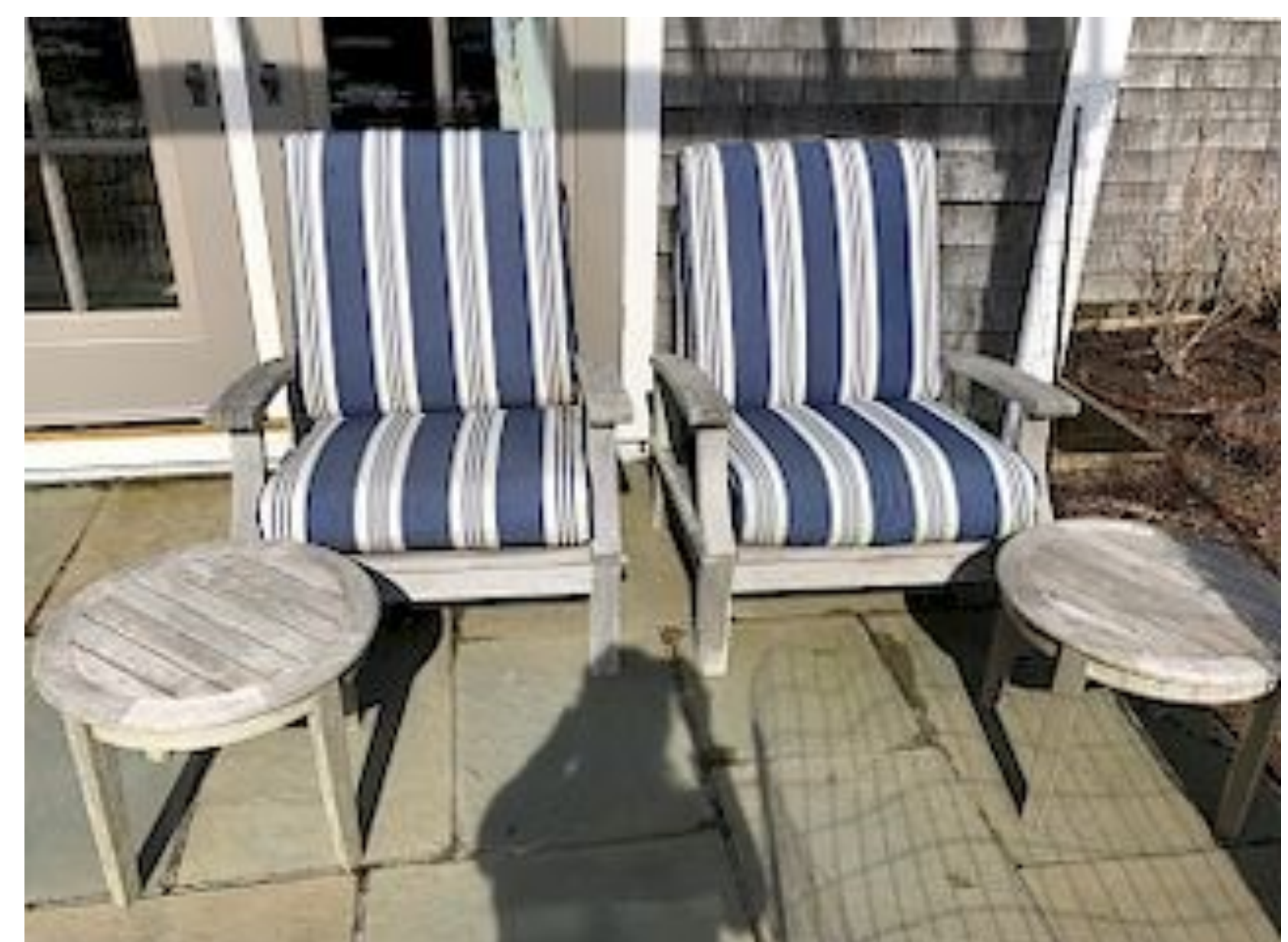
19th Century Tiger Maple Gothic Style Octagonal Center Table with shaped apron, barley twist pedestal legs, lower stretcher shelf, ending in disc feet . Height 29 ½ in. Diameter 45 in.
1,500/2,500

116



19th Century English Elmwood Three-Drawer Sofa Table. Height 32 in. Width 74 in. Depth 16 in.
1,000/1,500

118



Pair of Gloster Teak Armchairs with Blue and White Striped Cushions and Two Round Teak Side Tables 400/500

THE MICHAEL J. KITTREDGE COLLECTION

119



A. Cohen Oval Oil on Canvas "Portrait of the Sloop Alfred Keen", signed A. Cohen on reverse of canvas in oval gilt frame. 15 ½ in. x 19 ½ in. Overall 18 ½ in. x 22 ½ in.
400/600

120



Jan Pawlowski (Poland/Massachusetts b. 1949) Oil on Canvas "Sailing on Polpis Harbor" signed lower right Jan Pawlowski, carved gold leaf frame. 24 in. x 35 in.
Overall 32 ½ in. x 38 ½ in. 4,000/5,000

121



Round English Pine Eleven-Board Contemporary Dining Table on turned Sheraton style legs. Height 29 in.
Diameter 71 ½ in. 800/1,200

122



Spanish Armorial Ceramic Platter
Diameter 18 in. 200/400

123



Four Contemporary Decorative Oil Paintings on Board "Beachside Victorians". Panel Size: 8 in. x 10 in.
800/1,000

124



Set of Ten Bow Back Windsor Dining Chairs signed "D.R. Dimes", comprising four armchairs and six side chairs; Each with blue seat cushions
2,000/2,500

125



Ship's Brass Telegraph
by Simpson Lawrence LTD., Glasgow, Scotland
Height 43 ¼ in.
1,200/1,800

126



Chelsea Brass Barometer
Diameter Approximately 8 in.
250/300

THE MICHAEL J. KITTREDGE COLLECTION

127



English Petite Narrow Pine Cabinet, four drawers over single door
Approximate Height 39 in.
250/350

128



Decorative Maritime Painting "Two Masted American Sailing Yacht Approaching Buoy" in gilt frame.
10 ¼ in. x 15 ¾ in. Overall 15 ½ in. x 21 ½ in.
300/500

129



Decorative Maritime Painting "Two Masted American Sailing Yacht Rounding Buoy #2" in gilt frame
10 ¼ in. x 15 ¾ in. Overall 15 ½ in. x 21 ½ in.
300/500

130



19th Century English Elmwood Tilt Top Tea Table, turned standard to tripod base ending in snake feet. Height 22 ½ in. Diameter 28 in.
500/700

131



Red Leather Upholstered Over-Stuffed Three-Cushion Sofa. Length 87 in. Depth 36 in.
700/1,000

132



Red Leather Upholstered Over-Stuffed Three-Cushion Sofa. Length 87 in. Depth 36 in.
700/1,000

133



Red Leather Upholstered Over-Stuffed Three-Cushion Sofa. Length 87 in. Depth 36 in.
700/1,000

134



Pair of 19th Century Mahogany Upholstered Library Chairs with carved dolphin arm-grips on bulbous melon and tapering legs ending in casters.
2,000/3,000

THE MICHAEL J. KITTREDGE COLLECTION

135



19th Century English Embossed Brass Hanging Candle Box with village scene and royal lions. Height 12 ½ in. Width 9 ½ in. Depth 4 ½ in.
200/300

136



Pair of 19th Century English Spooled Oak Corner Chairs with rush seats sausage turned stiles, spiral turned legs and stretchers
400/600

137



Pair of 19th Century Petite English Spiral Leg Oak Footstools with blue leather upholstered tops
150/300

138



Round Teak Dining Table and 8 Assembled Chairs with Blue Woven Seats and Backs. Diameter 70 in.
1,000/1,200

139



19th Century Burlwood Pedestal Candle Stand with centered inlay, turned standard on round turned base Height 26 in. Diameter 17 ½ in.
200/400

140



Early 19th Century English Yew Wood Petite 2-Door Linen Closet Height 73 ½ in. Width 39 ½ in. Depth 21 in.
1,000/1,500

141



19th Century Child's Rocking Horse Toy Height 22 in. Length 37 in.
250/350

142



Antique Brass Stars, Diamonds and Dots Inlaid Mahogany Ship's Wheel on Custom Stand Height with Stand 52 in. Diameter of Wheel 42 in.
1,500/2,500

THE MICHAEL J. KITTREDGE COLLECTION

143



Pair of Contemporary Decorative Oil Paintings on Board "Beachside Victorians"

Panel size: 11 ¾ in. x 15 ½ in.

400/600

144



Pair of Carved Wood and Gilt Scallop Shell Brackets

100/150

145



19th Century English Demi-Lune Pine Sideboard with four drawers and lower shelf, four turned baluster columns, brass post and bail hardware
Height 34 ½ in. Width 85 in. Depth 20 in.

800/1,200

146



Copper and Brass Maritime Beacon with Fresnel Glass lens and mounts to a pier head, manufactured by the "Patent Lighting Co, LTD, Haves, England". Height 23 in.

700/900

147



Antique Tiger Maple and Elmwood Round Candlestand on tripod base. Height 25 in. Diameter 18 in.

250/350

148



Antique English Yew Wood Barley Twist Pedestal
Height 40 ½ in.

300/500

149



Asian Cast Iron Gong Bell with Wood Mallet Mounted as Sculpture on Plank Pedestal, iron base. Height 62 in. Width 24 in.

300/500

150



Federal Style Faux Tiger Maple Settee with green velvet upholstery. Height 43 in. Length 49 in. Depth 30 in.

700/900

THE MICHAEL J. KITTREDGE COLLECTION

151



"Not Under Command"
Copper Brass Ship's Lantern
with Fresnel Glass Lens,
with label N.U.C.
Height 20 in. 300/400

152



Oval Pedestal Slate Inlaid Dining Table, bold turned central
pedestal to stepped-down base.
Height 30 ½ in. Length 83 in. Width 43 in. 1,500/2,500

153



Antique Brass Dolphin
Doorstop. Approximate
Height 10 in. 200/300

154



Pair of 19th Century English Miniature Marine
Paintings on Board. 2 ½ in. x 3 in. 250/450

155



John Haste and Co. LTD
Engineer's Greenock Brass
Ship's Wheel. Height 49 in.
Diameter 40 in. 1,000/1,500

156



John Haste and Co. LTD
Engineer's Greenock Brass
Ship's Wheel on Stand
Height 23 in. Diameter 17 in. 400/600

157



Signed D.R. Dimes
Pine and Cherry
Child's Bow Back
Windsor High Chair
300/500

158



Pair of 19th Century American
Brass Dolphin Andirons, circa 1870,
the dolphin wraps around the
standard, together with a Brass
Mermaid Fireplace Poker
Height 28 in. 1,000/1,200

THE MICHAEL J. KITTREDGE COLLECTION

159



Hand Painted Nantucket Sign on Old Panel,
weathered finish. Approximately 6 ft.
200/300

160



Three Burgundy "Leatherette" Three-Bottle Wine Carriers
250/450

161



Petite Pedestal Game Table,
round checkerboard top,
fluted column base Height
20 ½ in. Diameter 17 in.
200/400

162



Hand Painted Magazine Rack with schooners and lighthouse
100/150

163



**18th Century American
Petite Bowback
Windsor Armchair**
200/300

164



**19th Century Oval
Tiger Maple Stand,**
turned standard on
arched spider legs
300/400

165



**Signed D.R. Dimes Pine and
Cherry Child's Bow Back
Windsor High Chair**
300/500

166



**"Nantucket Lightship" Cased Model by The Lannan Ship Model
Gallery, Boston. Case: Height 24 in. Length 33 in. Width 13 in.**
1,500/1,700

THE MICHAEL J. KITTREDGE COLLECTION

167



Signed D.R. Dimes Pine and Cherry Child's Bow Back Windsor High Chair

300/500

168



19th Century English Pine Clerk's Cabinet with four drawers and single door
Height 30 in. Width 46 ½ in.
Depth 12 in.

400/600

169



Two Pairs of Antique English Wood "Premier" Shoe Forms

100/200

170



Pair of Romanesque Poured Cement Brackets of a Herculean Figure

300/500

171



Pair of 19th Century Walnut Fluted Pedestals. Height 45 in.

1,000/1,200

172



Antique Style "America Yacht" Wood Trade Sign

200/400

173



Antique Style "H.M.S. Theseus Captain D. Bell" Nautical Decorated Demilune Low Table

300/500

174



19th Century Burlwood Sewing Box Chest on Quadrapod Pedestal Stand
Height 29 in. Width 18 in.
Depth 13 in.

400/600

THE MICHAEL J. KITTREDGE COLLECTION

175



**Carved and Gilt Wood
Pineapple by J. P. Uranker,
Martha's Vineyard**

100/150

176



**19th Century Burlwood Letter Box with Contrasting
Candy Striped Inlaid Edges, lid lifts to reveal 3 letter
compartments**

175/225

177



Three Sterling Silver Shell Dishes
200/300

178



Sterling Silver Mounted Nautilus Shell Sauce Boat
Height 6 ½ in. Length 10 in.

200/300

179



Sterling Silver Blow-fish Wine Bottle Caddy
Length 10 in.

200/300

180



**Two footstools: 19th Century Mahogany Empire Stool and
a Bird's Eye Maple Biedermeier stool, each with navy blue
leather upholstered tops**

200/400

181



**19th Century American Federal Petite Mahogany and Satinwood
Three-Drawer Server**, two oval satinwood panels on outer drawers,
central drawer with band inlay, repousse brass knob pulls, square
tapering legs ending in spade feet .

Height 30 in. Width 45 in. Depth 19 in.

800/1,200

182



**Group of Three
Treenware Covered
Vessels with Painted
Bands. Heights 14½ in.
13 ½ in. 11 in.**

150/250

THE MICHAEL J. KITTREDGE COLLECTION

183



Large **Blue and White Broadloom Carpet**, with leaf border and grid central design. 10 ft. x 14 ft.
500/700

184



Folk Art Multi-Wood Inlaid Game Board with a whale inlaid in each corner. 16 ½ in. x 16 ½ in.
200/250

185



Pair of Pitch Pine Bedside Cabinets with slide, drawer and cupboard door
Height 28 in. Width 20 in. Depth 17 in.
400/600

186



Solid Brass and Wood Handle Yacht Wheel
Diameter 24 ½ in.
350/450

187



19th Century English Pine Watchmaker's Cabinet of 16-Drawers Over 2 Faux Double Drawers, white porcelain knobs, lid lifts to reveal storage section
Height 25 in. Width 22 in.
Depth 9 in.
400/600

188



Collection of Antique Wood Painted Buoys and Antique Wheelbarrow
300/400

189



Pair of Gloster Teak Wood Outdoor Rocking Chairs and Two Gloster Teak Settees with blue and white cushions and Four round side tables
1,000/1,200

190



19th Century Tiger and Curly Maple Pedestal with shaped top, column and plinth base.
Height 32 ½ in. Width 16 in.
300/500

THE MICHAEL J. KITTREDGE COLLECTION

191



Marble Top Bistro Table and Pair of D. R. Dimes Windsor Bow Back Side Chairs with tie seat cushions
500/700

192



Marble Top Bistro Table and Pair of D. R. Dimes Windsor Bow Back Side Chairs with tie seat cushions
500/700

193



Collection of Eleven Carved Noblewood Boats
150/250

194



Antique Style Wood Trade Sign "J. Smith Tackle Manufacturer", est. Birmingham 1887
250/350

195



18th Century English Wainscot Chair
300/500

196



Two Broadloom Runners with nautical sailboat motifs. 12 ft. 10 in. x 2 ft. 6 in. and 9 ft. 10 in. x 2 ft. 6 in.
700/900

197



Small Antique Night Watchman's Oil Lamp in Wood Carrying Case
150/250

198



Set of 6 Signed D.R. Dimes Bowback Windsor Dining Side Chairs
1,200/1,400

THE MICHAEL J. KITTREDGE COLLECTION

199



Marble Top Bistro Table and Pair of D. R. Dimes Windsor Bow Back Side Chairs with tie seat cushions

500/700

200



Pair of Pewter Patina Metal Dolphin Lamps
Height 28 ½ in. Diameter 15 in.

200/400

201



Pair of 19th Century English Mahogany Poe Tables with marble tops and single door Height 28 ½ in. Diameter 15 in.

500/700

202



Navy Blue Leather Upholstered Foot Stool on bun feet

200/400

203



Large Brass "Lyth-Stockholm Works" Lighted Ship's Binnacle Hood with Associated Compass, two side candle lights.
Height 16 in. Width 21 in. Depth 13 in.

400/500

204



19th Century Maple Tripod Octagonal Top Candlestand on turned standard, continuing to tripod base ending in snake feet

200/400

205



Blue and Creme Glenn Plaid Skirted Four Cushion Settee. Length 64 in.

600/800

206



Ahlemann and Schlatter Bremen, Hamberg Copper Ship's Port or Starboard Lantern #7854

Height 23 in. 200/400

THE MICHAEL J. KITTREDGE COLLECTION

207



Pair of Brass and Copper Ship's Lanterns, circa 1930s electrified, missing handles. Height 15 in.
300/500

208



18th Century Oak Fanback Windsor Side Chair
Height 36 in. Seat Height 16 in.
Width 23 ½ in. 300/500

209



Antique Style Nautical Decorated Box "For King and Country H.M.S. Leander", with a painted portrait of the 3-masted Clipper Ship *HMS Leander*. Height 11 ½ in. Width 21 in. Depth 16 in.
250/350

210



Blue and Creme Glenn Plaid Skirted Six-Cushion Sofa
Length 86 in.
500/700

211



Contemporary Chelsea Brass Ship's Bell Clock on custom mahogany stand
600/800

212



Hugh Douglas Sheet Iron Worker, Copper and Brass, Starboard Light #0.636. Height 24 in.
250/450

213



Yellow and Blue Stripe Upholstered Skirted Settee
400/500

214



Brass Twin Dolphin Rudder Head Ornament. Length 19 in.
250/350

THE MICHAEL J. KITTREDGE COLLECTION

215



Wing Chair and Ottoman Upholstered in floral linen

300/500

216



Green Bros. Watchmaker and Jeweler's General Supply Cabinet with 20 drawers and lift top lid storage compartment. Height 8 ½ in. Width 15 in. 300/500

217



Fireplace Set comprising: Scallop Shell Andirons

Height 14 in.

Clipper Ship Tools: Poker, Shovel, Tongs, Stand Wire Fender with Brass Rail

400/600

Height 24 ½ in. Width 44 in. Depth 11 in.

218



19th Century English "T.A." Painted Lift Top Wood Box with brass bale carrying handle

200/300

219



Robert Sanders (20th Century) Oil on Canvas "3-Mast American Clipper Ship on the Open Seas", signed lower right Robert Sanders in carved and molded gilt frame 18 in. x 24 in. Overall 27 in. x 33 in.

400/600

220



19th Century English Satin Wood Band Inlaid and Fluted Lift Top Round Potty with green leather top on casters

300/400

221



Collection of 17 Free-Form Glass Objects Resembling Ocean Waves

100/300

222



19th Century English Brass Dolphin Doorstop

200/250

THE MICHAEL J. KITTREDGE COLLECTION

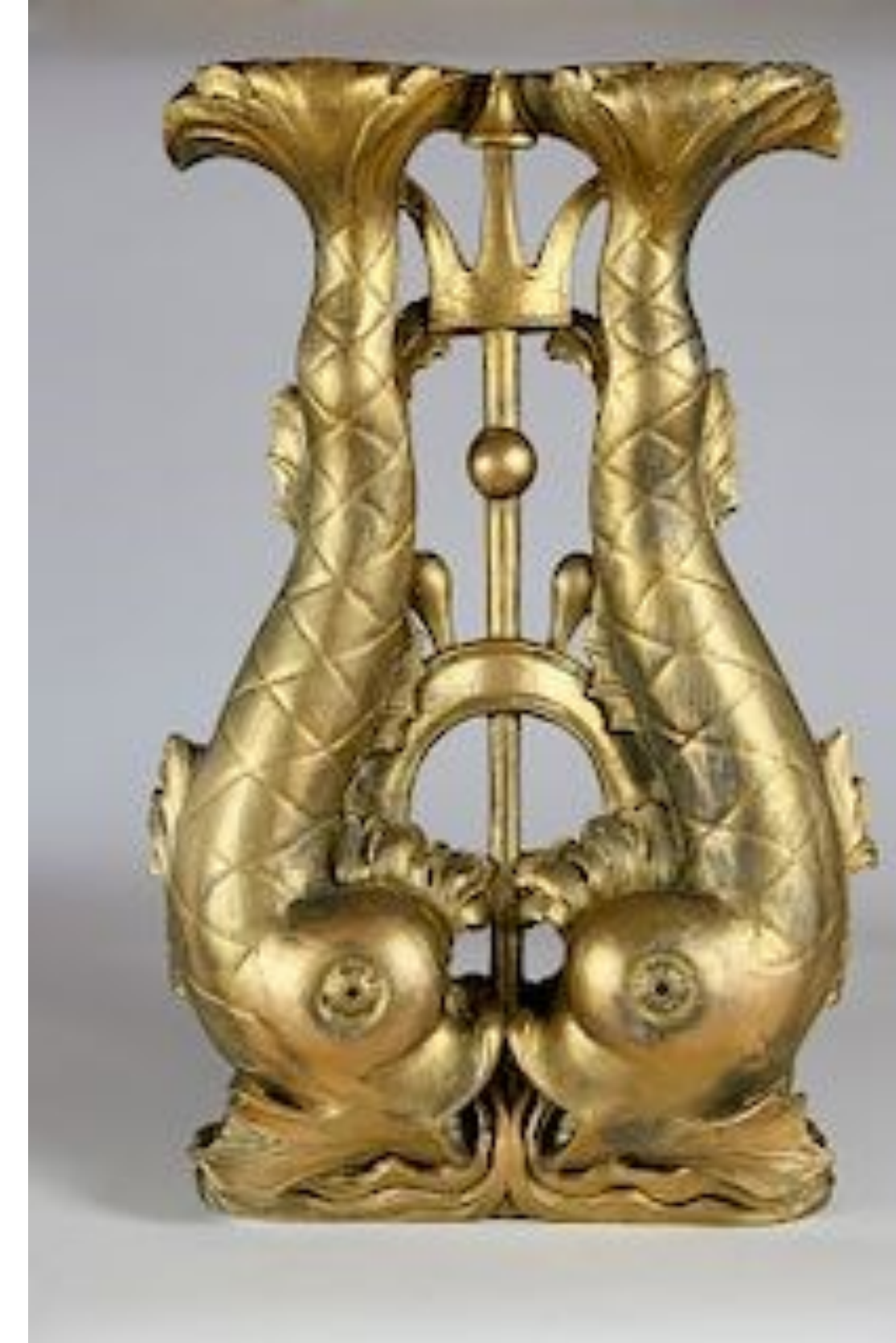
223



Pair of Brass and Glass Globe Light Fixtures
with brass wall mounts

300/400

224



Gilt Wood Winged Dolphin Ornament

Height 28 in. Width 19 in.

200/400

225



18th Century English Comb Painted Wood Highback Wainscot Chair

Height 43 ¾ in.
400/600

226



Pair of Square Garden Planters with Scallop Shell Motif
One of Two Pictured

125/250

227



Pair of Rectangular Garden Planters with Scallop Shell Motifs. One of Two Pictured

200/250

228



19th Century American Tiger Maple Shaped Tilt Top Tripod Candle Stand, notched rectangular top, turned standard on 3 scrolled legs and feet
Height 30 in. Width 22 ½ in.
Depth 18 in. 300/500

229



Pair of Gloster Teak Armchairs with Blue and White Cushions and Round Teak Table

400/500

230



Pair of Baldwin Brass Candlestick Lamps

150/250

THE MICHAEL J. KITTREDGE COLLECTION

231



Pair of 19th Century English Mahogany Pedestal Plant Stands, turned standard to tripod bases on bun feet
300/400

232



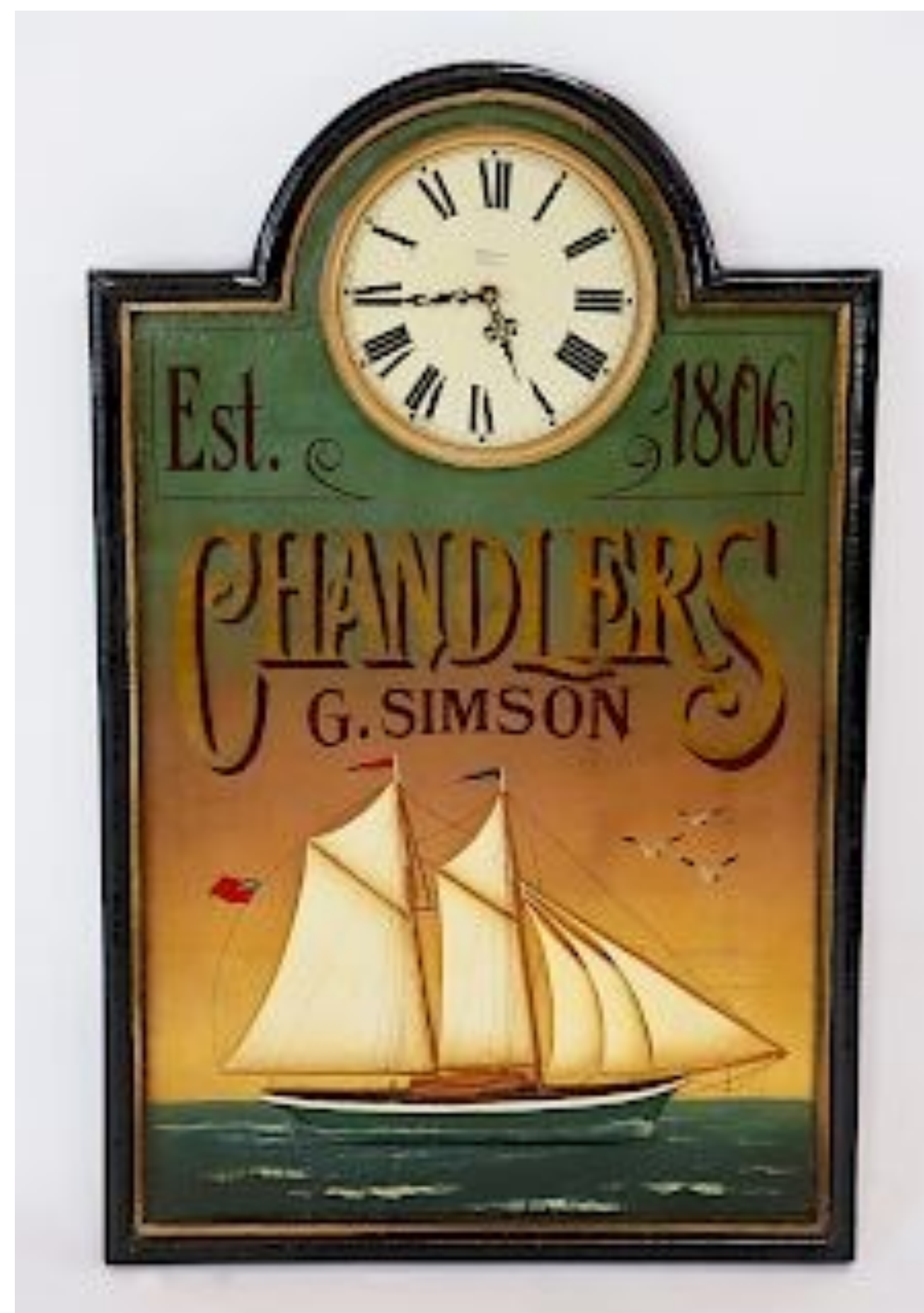
English Pewter Cocktail Shaker
100/150

233



Hepplewhite Style Tall Narrow Console Table, mahogany top, and ash-wood square tapering legs
Height 35 ½ in. Length 70 in. Depth 9 in.
300/500

234



Antique Style Hand-Painted Chandelers G. Simpson, Est. 1806 Nautical Trade Sign Clock
300/500

235



Four 18th Century English Rustic Joint Stools
Height 22 in.
300/500

236



Four Colossal Red and White Painted Buoys
Height 30 in. Width 12 ½ in.
300/400

237



19th Century Mahogany Dolphin Inlaid Pedestal
Height 38 ½ in.
200/400

238



English Round Mahogany Cauldron with Turned Spools, interior brass liner on turned ball feet
Height 18 in. Diameter 23 ½ in.
200/250

THE MICHAEL J. KITTREDGE COLLECTION

239



Two Nautical Wheels: A Mahogany Ship's Wheel
with brass center. Diameter 24 in.

A Brass Yacht Wheel with wooden paddles
Diameter 14 in.

200/300

240



**19th Century English Burl-Walnut
Pedestal Round Cupboard Side Table**
with single door on turned standard to
stepped round base. Height 30 ½ in.

250/350

241



**Spencer & Spencer Hand Painted Ceramic
Scallop Shell Platter**

100/125

242



Pair of Composition Stone Scallop Shell Ornaments
Height 11 ½ Width 13 ½ in.

100/125

243



Five "Southwood" Upholstered 5-Leg Armchairs
1,200/1,400

244



Three Vintage Painted Buoys on Ropes
100/200

245



19th Century English Brass Night Watchman's Lantern
Height 12 in.

200/250

246



**Antique Wood and Iron
Wine Press**

200/400

THE MICHAEL J. KITTREDGE COLLECTION

247



Pair of 19th Century Petite Wood Spittoons
with ceramic liners, blue leather upholstered lids
150/250

248



Brass Wempe Chronometerwerke
250/350

249



**Yellow and Blue
Stripe Upholstered
Skirted Club Chair
and Ottoman**
300/400

250



**Pair of Poured Cement Putti
Holding Dolphins Table
Lamps**
Approximate Height 18 in.
400/600

251



**Pair of Gilt Composition Rope Brackets with
Tassels**
200/400

252



**Copper and Brass Electrified
Nautical Lantern**
Height 14 in. 200/300

253



**Pair of "Southwood" Green and Blue Multi-Stripe
Upholstered Georgian Style Club Chairs** on mahogany
legs ending in ball and claw feet 500/750

254



**Pair of Brass Dolphin Electrified
Lamps**
300/350

THE MICHAEL J. KITTREDGE COLLECTION

255



Vintage Gaff Rigged Pond Model with Sails on Stand
Approximate Height 50 in.
Width 40 in. 500/700

256



Pair of White Alabaster Bird and Grape Small Sculptures. Approximate Height 10 in.
250/350

257



Antique English Pine Chest of Drawers, two over two drawers, wood knobs, on turned feet
Height 33 in. Width 36 in. Depth 17 in.
400/600

258



Marble Top Bistro Table and Pair of D. R. Dimes Windsor Bow Back Side Chairs with tie seat cushions.
500/700

259



Marble Top Bistro Table and Pair of D. R. Dimes Windsor Bow Back Side Chairs with tie seat cushions.
500/700

260



Vintage Wood Yacht Wheel with wood paddles and brass hub. Diameter 24 ½ in. 200/300

261



19th Century English Mahogany Brass Bound Decanter Box on fitted mahogany stand. 200/300

262



Contemporary Brass Tabletop Tripod Telescope on tripod slipper footed base. Height 15 in. 200/400

THE MICHAEL J. KITTREDGE COLLECTION

263



19th Century English Mahogany Butler's Folding Tray with brass fittings. 200/250

264



19th Century English Pine Backless Bench
Height 18 in. Width 80 ¼ in. Depth 8 ½ in.
200/400

265



Group of Three Vintage Wood and Glass Hourglasses, a double, triple and tubular. 300/400

266



Pair of White Painted Poured Cement Full-Bodied Figural Garden Lions. Height 15 in. 150/250

267



Three Gloster Teak Chaise Lounges with Blue and White Striped Cushions and Three Gloster Teak Side Tables 600/800

268



Pair of Cast Iron and Walnut Swivel Stools 200/300

269



Six-Light Brass Chandelier.
Height 23 in. Diameter 37 in.
1,000/1,500

270



Six-Light Brass Chandelier with blue and white clip on shades. Height 23 in. Diameter 37 in.
1,000/1,500

THE MICHAEL J. KITTREDGE COLLECTION

271



Brass Fireplace Set
comprising ball and finial
top brass andirons, ball top
brass fire tools, English coal
scoop and wire hood
Height 28 in. Depth 21 in.
300/500

272



English Brass Round Covered Ash Bucket
150/250

273



Pair of Heim Blue and White Porcelain Vases with views
of St. Goarshausen, Burg Katz. Approximate Height 15 in.
250/350

274



Miniature New Bedford Whaleboat Model
200/400

275



**Pair of Carved Oak
Female Figural
Architectural Elements**
Height 24 in. 200/300

276



**Pair of 19th C. English Pine
Pedestal Cabinets**, each with
door and interior shelves
Approximate Height 48 in.
300/500

277



**"La Belle Poule" France, 1834 Contemporary
Man-O-War Three-Mast Ship Model**
Height 29 in. Length 37 in. Width 12 in.

278



**Contemporary Copper and Brass
Deep Sea Diver's Helmet**
Height 18 in
250/350

THE MICHAEL J. KITTREDGE COLLECTION

279



Copper Ship's Lantern
with Fresnel Glass Lens.
Height 24 in. 200/250

280



Stuurboord Copper Double Ship's Light with Fresnel Glass Lens.
Height 23 in. 300/400

281



Pair of Inlaid Mahogany "Southwood" Sailboat Upholstered Tub Chairs on reeded legs.
500/600

282



Pair of Carved and Turned Wood Shells, signed by artist.
Length 22 in. 200/300

283



19th Century Dovetailed Pine Sea Chest with Original Rope Becket. Height 18 in. Width 33 in. Depth 16 in.
200/300

284



Carved Wood Sculpture of a "Tipsy Friar"
Height 19 in. Width 10 in.
300/400

285



Antique Pine Lift Top Dovetailed Blanket Chest on turned feet . Height 22 ½ in. Width 41 in. Depth 19 ½ in.
200/300

286



Three Signed D.R. Dimes Tiger Maple Candlestands
Height 26 ½ in. Width 16 in. Depth 16 in.
500/700

THE MICHAEL J. KITTREDGE COLLECTION

287



19th Century English Brass Foot Rest on carved wood animal paw feet

200/400

288



Green Patina Bronze Octopus

200/300

289



19th Century English Pine Apothecary Chest of 24 Drawers. Height 29 in. Width 51 in.

Depth 17 in.

800/1,200

290



Two 19th Century Petite Brass and Wood Ship's Pulleys

100/150

291



19th Century Brass and Wood Capstan Box
Approximate Height 4 in.

100/150

292



Pair of Mahogany Column Pedestals on Plinth Bases

Height 31 in.

400/500

293



19th Century Rocky Shore Seascape, unsigned, gilt frame

11 ½ in. x 19 ½ in. Overall 20 ½ in. x 28 ½ in. 400/600

294



Round Poured Plaster "Sun Face"

Diameter 19 in.

100/125

THE MICHAEL J. KITTREDGE COLLECTION

295



Claire Murray Hooked Rug depicting schooner off Sankaty Head Lighthouse. 24 in. x 36 in.
75/125

296



Shadowbox Collection of Vintage and Antique Games and Sports Memorabilia
200/400

297



Shadowbox Collection of Vintage and Antique Games and Sporting Memorabilia
150/250

298



Shadowbox Collection of Vintage and Antique Games and Sporting Memorabilia
150/250

299



Shadowbox Collection of Vintage and Antique Games and Sporting Memorabilia
150/250

300



Contemporary Six-lift Half Hull of the "Red Jacket" on mahogany board. Length 33 in. Overall 39 in.
200/400

301



Carved Wood
"Nantucket" Kindling
Bucket with Rope Handle
200/300

302



Robert Scott Jackson Oil on Canvas "Day at the Beach", signed lower left, Jackson.
5 1/4 in. x 8 in. Overall 10 1/2 in. x 13 1/4 in.
300/400

THE MICHAEL J. KITTREDGE COLLECTION

303



**Antique Inlaid Multi-Wood
Gameboard**

150/300

304



**19th Century F.I. Buckingham, Plymouth,
Massachusetts Cranberry Scoop**

200/400

305



**Adjustable Brass
Bamboo Floor Lamp
with tin shade**

100/125

306



White Wicker Settee, Armchair, Ottoman and Side Table

350/500

307



**Antique Carved Pine
Ogee Mirror of
Rectangular Form**

37 in. x 18 ½ in.

100/150

308



**Hand Painted Nautical Foot Locker "Captain W. Lord",
decorated with cannon, ship in full sail and the date
1861**

200/300

309



**Continental Hand Carved Wood Sculpture of a Maiden
Sitting on a Wave and Holding a Shield. Height 9 in.**

150/250

310



Hooked Rug of the Town of Nantucket

2 ft. 11 in. x 4 ft. 5 in.

100/150

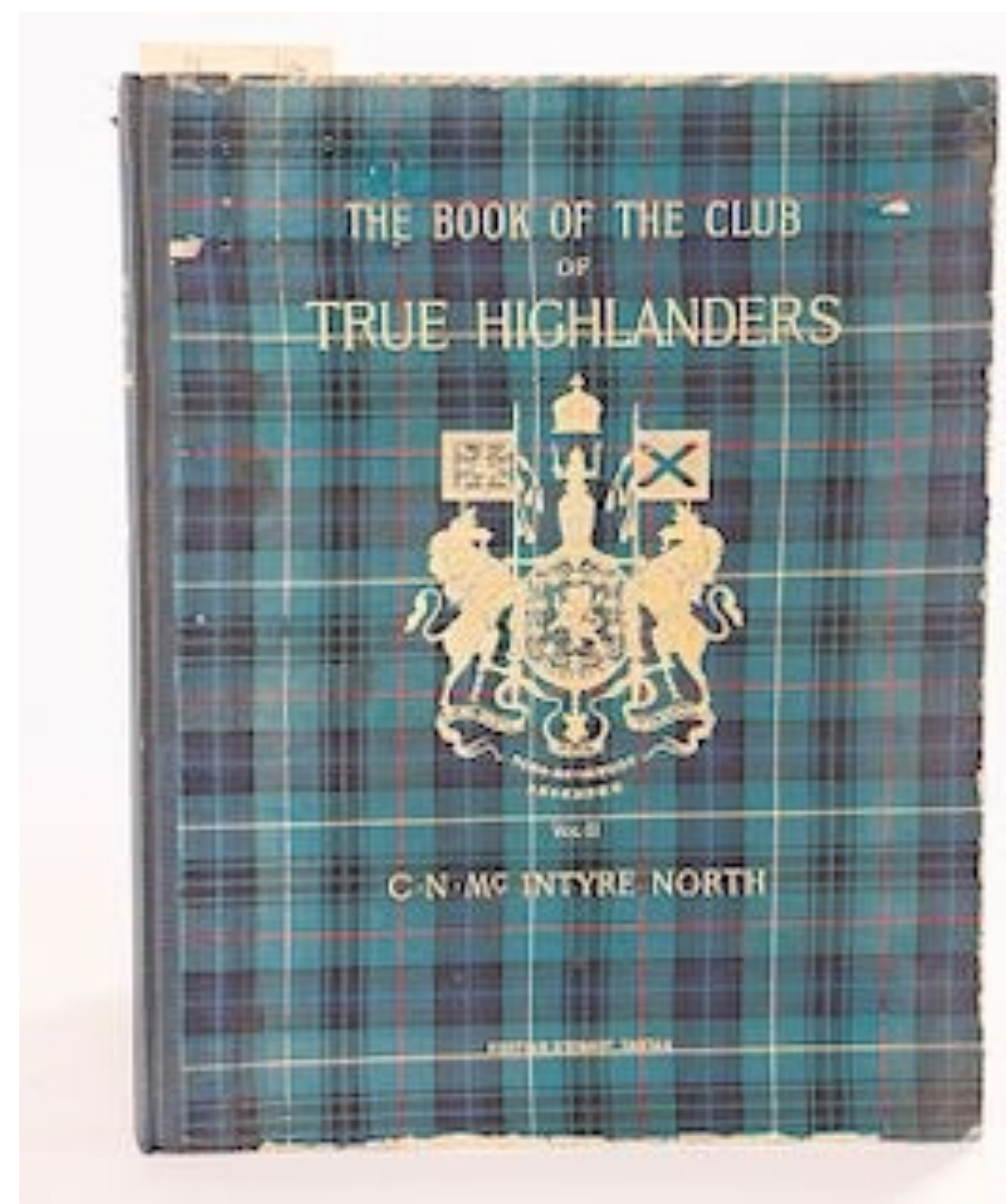
THE MICHAEL J. KITTREDGE COLLECTION

311



Butcher's Block Coffee Table, single board top on four chamfered legs. Height 21 in. Width 48 in. Depth 19 in. 300/400

312



"The Book of the Club of True Highlanders" by C.N. McIntyre North, Volume 2 200/300

313



15 Volumes of *"The Brandes Shakespeare - The Plays by Shakespeare"* Published 1905 200/400

314



White Wicker Glass Top Dinette Table and Four Chairs 300/400

315



Brass Pedestal Base Ship's Lantern with Fresnel Glass Lens, three flanges Height 11 ½ in. 200/400

316



18th century American Maple Candlestand on Tripod Base Ending in Snake Feet, visible split to base of standard Height 26 ½ in. Diameter 15 ½ in. 200/250

317



Pair of 19th Century Rope Beackets on Wood Plaque 250/350

318



Vintage Dart Board

150/250

THE MICHAEL J. KITTREDGE COLLECTION

319



Pair of Antique English Walnut Coat-of-Arms Stools, one seat with age crack 150/200

320



Four Chrome Flying Fish Ornaments
Approximate Length 7 in. 100/150

321



Six-Piece Vintage French Blue and White Enamel Canister Set
by "B.B. Torseine" 200/300

322



Four Brass Scallop Shell Pharmacy Lamps
150/250

323



19th Century English Bird's Eye Maple Candlestand
100/200

324



Modern Kaleidoscope
Stamped "C.C. Bush, Pat. Nov. 17 1874" on mahogany turned standard table top tripod stand 200/300

325



19th Century English Maple Potty with leather top lid and lower drawer and porcelain liner
Height 18 in. Diameter 17 in. 100/200

326



Miscellaneous Group of Antique English Brass comprising:
Lion and Unicorn Bookends, Scallop Shell Letter Holder, Pair of Scallop Shell Candle-Shields, Match Box, Small Trumpet, Lion and Unicorn Plaque, Match Safe and Fisherman Doorstop 200/400

THE MICHAEL J. KITTREDGE COLLECTION

327



Pitch Pine Tray Top Coffee Table, the removable tray lifts out for serving, on square tapering leg and H-stretcher base 200/400

328



19th Century Oak Two-Tier Upholstered Foot Stool 125/150

329



Starbay Mahogany Butler's Tray on folding stand, inlaid compass rose. Height 22 ¾ in. Length 24 ½ in. 200/300

330



19th Century Oval Pine and Walnut Storage Trunk Height 17 ½ in. Length 29 ½ in. Depth 24 in. 200/400

331



Blue and White Striped Upholstered Skirted Club Chair 150/250

332



Pair of Antique Painted 6-Barrel Ball Toss Lawn Game 100/200

333



Four Blonde Oak Windsor Armchair Swivel Barstools Height 49 in. 600/800

334



Oval Open Top Barrel with wrought iron handles and bands, crudely inscribed "M". Height 22 in. Width 18 ½ in. 100/200

THE MICHAEL J. KITTREDGE COLLECTION

335



Pair of Upholstered Club Chairs
in scallop shell tapestry fabric 600/800

336



Carved Wood Figure of an Austrian Maiden
Height 21 in. 100/200

337



Georgian Style Mahogany Tilt Top Candlestand with central inlaid medallion, turned standard and tripod slipper feet
150/250

338



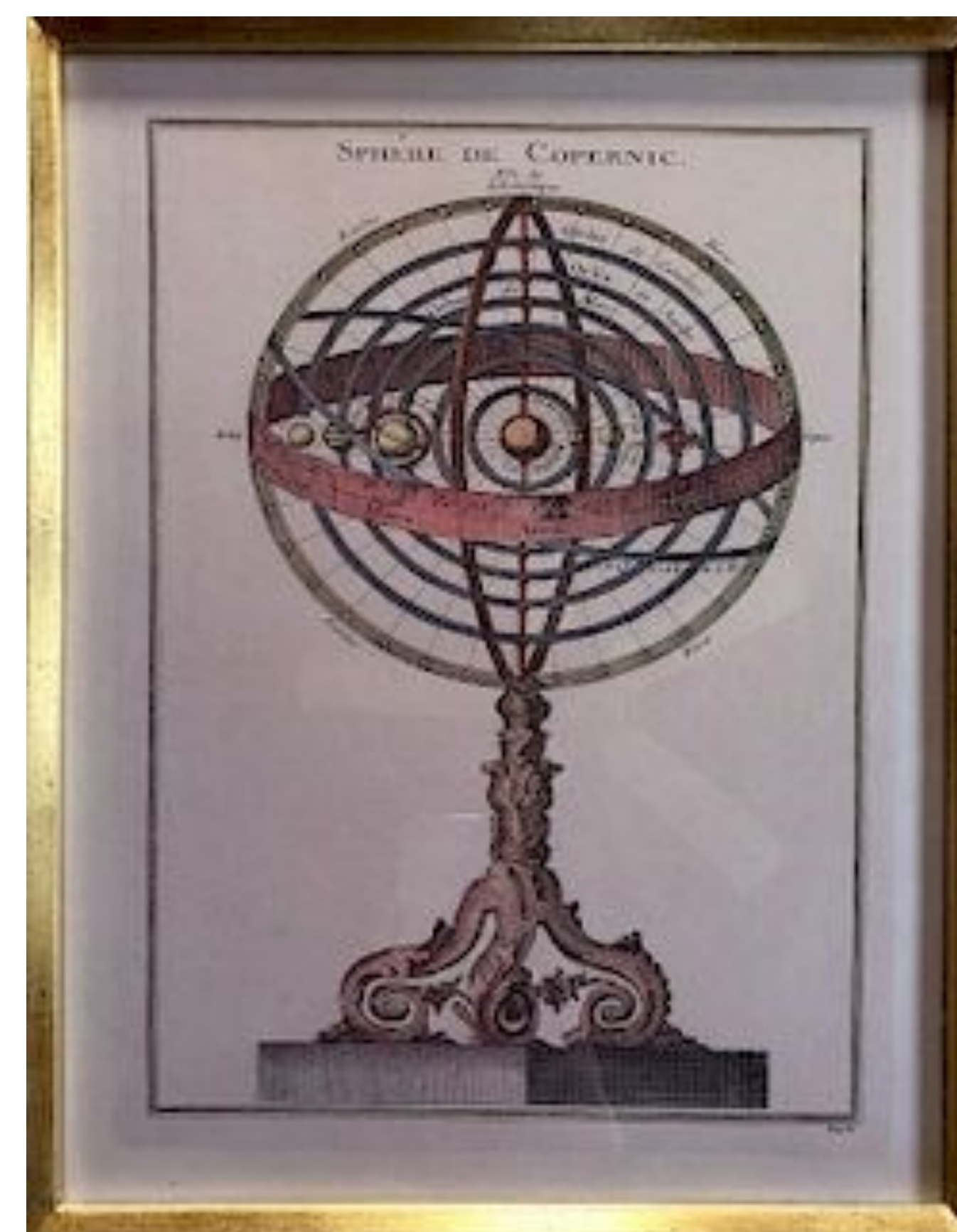
Set of Ten "Nantucket" Glass Pilsners
100/200

339



Painted "Caviar" Storefront Sign 200/300

340



Pair of Celestial Framed Prints: "Sphere de Copernic" and "Globe Celeste"
18 in. x 13 in.
Overall 28 in. x 22 ½ in.

341



Contemporary Pond Model by the Authentic Model Company
Height 40 in.
Width 43 in.
150/250

342



Antique Style Wooden Trade Sign "The Anchor Ales & Stout"
200/400

THE MICHAEL J. KITTREDGE COLLECTION

343



Antique Style "Morgan Car Company" Painted Wood Trade Sign 300/400

344



19th Century Petite Octagonal Marble Top Candlestand with turned standard on arched scrolled legs 125/250

345



Vintage Painted and Tooled Leather Backgammon Board. 21 in. x 21 in. 200/300

346



19th Century English Elm Pub Chair 200/300

347



19th Century Birds-Eye-Maple Lift Top Box with Tumbling Block Inlaid Lid 100/150

348



Set of 6 Polished Aluminum Serving Dishes comprising: Pair of Butler's Serving Trays, Two Round Shallow Serving Bowls, Two Deep Serving Bowls 200/300

349



Polished Aluminum Scalloped Edge Round Serving Bowl Height 4 ¼ in. Diameter 20 in. 50/100

350



Vintage Carved Mahogany Shell Bracket 150/250

THE MICHAEL J. KITTREDGE COLLECTION

351



**Two Regency Style Brass
Gallery Top Pedestal
Tables**

Heights 42 in. and 37 in.
200/250

352



Eight Aluminum Alloy "Dory" Shrimp Boat Serving Vessels

150/250

353



20 Aluminum Alloy Serving Dishes Including:

Crab, 2 Trout, 1 Round on Fishtail Stand, 1 Shell, 5 Buckets, 4 Fish Bowls, Scallop Shell, Compartment Tray, 2 Compartment Tray, Round Bowl with Stars
300/500

354



**Pair of Polished Aluminum Oval Basket
Motif Two-Handle Serving Bowls**

100/200

355



Colossal Patina Metal Serving Tray with ship's rope woven in and out of malachite rings. 36 in. x 19 in.
200/400

356



Three Aluminum Oval Ice Buckets for two bottles each with aluminum rope trim
100/200

357



Two Aluminum Oval Serving Bowls embellished with sea-motif on rims together with 2 serving utensils. Length 15 in and 25 in.
100/200

358



Pair of Polished Aluminum Oval Serving Bowls with scalloped edges and two sets of serving forks and spoons
100/200

THE MICHAEL J. KITTREDGE COLLECTION

359



67 Composition "Splash" Bowls, comprising:
24 Aluminum Composite "Splash" Chowder Bowls
with milk white glaze on interior, 12 similar bowls in
"Gold" finish together with 31 "Splash" Salad Bowls
6 ½ in. and 10 in. Diameters respectively 300/500

360



Pair of Blue Plaid Upholstered Club Chairs
400/600

361



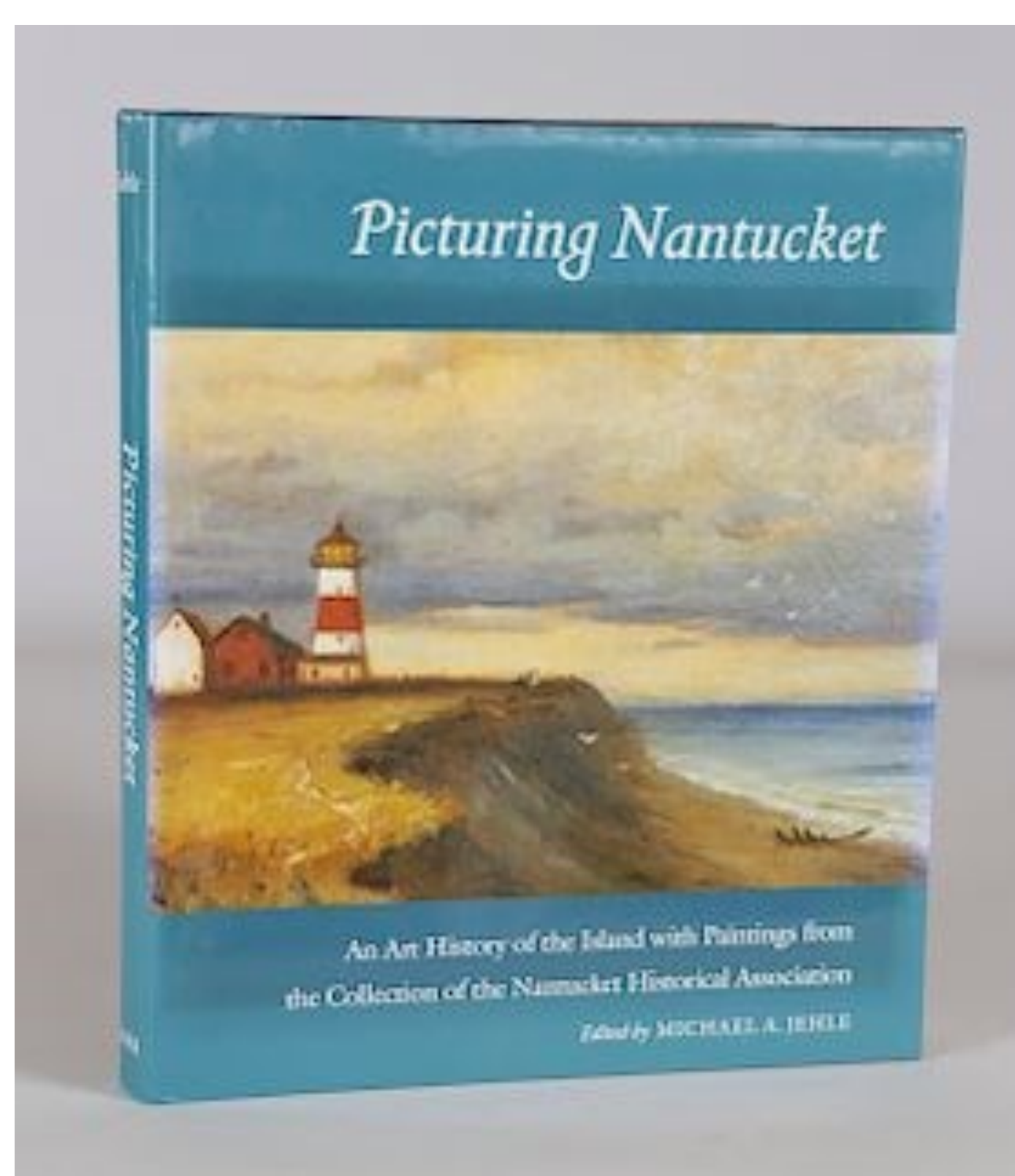
**19th Century English Pine One Drawer
Coffee Table** on turned legs
300/400

362



Jean E. Petty Oil on Canvas "Nantucket Island" signed
lower right, Petty '05. 5 in x 7 in. Overall 13 in x 15 in.
200/400

363



**Picturing Nantucket An Art
History of the Island with
Paintings from the Collection
of the Nantucket Historical
Association**, Works by Artists
Born Before 1900, Edited by
Michael A. Jehle
Published 2000 Nantucket
Historical Association,
Nantucket, Massachusetts
75/125

364



Pair of "P.M. Craftsman" Whale on a Wave Bookends
in chrome finish
75/150

365



Beachley Skirted Club Chair
Upholstered in Flip Flop
Fabric
150/250

366



Small Dovetailed Mahogany Lift-Top Box
gilded "Nantucket"
100/200

THE MICHAEL J. KITTREDGE COLLECTION

367



Pair of Indian Silver Plated 5-Light Candelabra
150/250

368



19th Century Carved Walnut Hanging Shelf with two drawers and lollipop crown surround
100/200

369



18th Century English D-Seat Low-Back Windsor Chair
150/200

370



Small 19th Century English Brass Hinged Top Box
75/125

371



Creme and Green Broadloom Carpet
8 ft. 5 in. x 7 ft. 4 in. 400/600

372



Pair of Carved Wood Scallop Shell Ornaments
100/150

373



19th Century English Rustic Pine Chest of Drawers on bracket feet
Height 34 in.
Width 29 ½ in.
Depth 17 ½ in.
200/400

374



Multi-Wood Inlaid Umbrella Stand on Chrome Bamboo Base. Approximately 3 ft.
100/200

THE MICHAEL J. KITTREDGE COLLECTION

375



**Early Brass Automobile
Lantern**

150/250

376



Brass Coal Skuttle

75/125

150/200

377



**English Carved
Mahogany Fluted
Pedestal**

Height 28 ¼ in.
200/250

378



**Pair of 18th Century Continental Wood and Iron Heavy
Cavalry Stirrups**

150/200

379



**Queen Anne Style
Upholstered Stool**
with shell carved
knees. Width 21 in.
150/200

380



Modern Asian Carved Wood Box with brass
scallop shell finial on lid and scrolled brass feet

100/150

381



**Contemporary Brass
Two-Light Candlestick
Lamp with Brass Shade**

100/150

382



**Pair of Ship Prints Under Glass of the Clipper Ships "Yorkshire 1100
Tons" and the "Shannon 1450 Tons" in bird's eye maple frames**
Overall 19 in. x 23 in.

200/400

THE MICHAEL J. KITTREDGE COLLECTION

383



Wood and Brass Yacht Wheel with brass hub
Diameter 16 in. 100/200

384



Pair of Brass Ship's Light Lamps with shades,
electrified. Height 20 in. 150/250

385



**Pair of Brass Candlestick
Electrified Lamps**
Height 30 in. 100/200

386



**Antique Carved Wooden
Circus Clown Figure together
with a Carved Wood Bunny
Rabbit**

Bunny Rabbit Not Pictured

100/150

387



Yellow and Blue Broadloom Carpet with diamond
border and overall grid central design
6 ft. x 9 ft. 100/200

388



**Yellow and Blue Striped
Upholstered Skirted Club
Chair** with blue piping
150/250

389



Artist Made Dolphin Ceramic Platter
100/200

390



Antique Croquet Set in custom wood box
100/200

THE MICHAEL J. KITTREDGE COLLECTION

391



Pair of Virginia Metal Crafters Bronze Seahorse
100/125

392



Pamela Dalton Paper Cutout "Tea Party"
signed. Approximately 5 in. x 12 in. 50/100

393



19th Century English Elm Cricket Stool
75/125

394



Miniature Chest of 6-Drawers on bun feet
Height 13 in. 125/175

395



19th Century Walnut Brandy Stand with original retailer's label affixed to the underneath "*J. Et E. Perol, Paris*" 200/400

396



Faux Wood Composition Chicken
25/50

397



Contemporary Yellow and Blue Chinese Porcelain Foot Bath
50/100

398



Vintage Wicker, Leather and Canvas Fishing Creel Basket
100/150

THE MICHAEL J. KITTREDGE COLLECTION

399



Oval Silver Plated Fruit Bowl with blue and white ceramic balls 150/200

400



Print Under Glass "West Indiaman Medina 1811" in bird's eye maple frame. 13 in. x 15 ½ in. 100/150

401



Green and White Striped Slip-Covered Skirted Wing Chair 150/250

402



8-Drawer Wood Spice Cabinet 100/200

403



Set of 3 D.H. Osmer Spotted Birch Candle Holder Vases, 1999 100/150

404



Vintage Wooden Croquet Set with red painted carrying rack and four balls 100/200

405



Hand Painted and Carved Knockdown Figural Bowling Pin Set 75/125

406



Vintage Birchwood Skittle Ball Game 75/150

THE MICHAEL J. KITTREDGE COLLECTION

407



Three 1930s Vintage Tin Lithograph Skillball, Lucky Strike, and Gold Star Table Top Games

150/200

409



Composite Deep Sea Clam Shell

Height 16 in. Width 40 in. Depth 22 in.

150/200

408



Marble Serving Platter 50/100

410



19th Century Cranberry Scoop

100/150

411



Pair of Gilt Composition Scallop Shell Motif Ornaments

100/150

412



Donjo Limited Edition Patinated Bronze Dolphin Sculpture Group #40/195, signed Donjo 100/200

413



Three-Light Galvanized Tin and Brass Ship's Lantern, with carrying handle 75/150

414



Small Mahogany Yacht Wheel with Chrome Hub Diameter 20 in. 125/175

THE MICHAEL J. KITTREDGE COLLECTION

415



Pair of 19th Century English Elm Stools
100/150

416



Ceramic Standing Duck
Height 28 in. 50/100

417



Group of Three 19th Century Tin Candle Molds of various
shapes and sizes
100/200

418



19th Century Cape Cod Cranberry Scoop
100/200

419



**Pair of Italian Carved
Wood Brackets**
200/400

RAFAEL OSONA

NANTUCKET AUCTIONS

P.O. Box 2607 Nantucket, MA 02584
Tel: (508) 228-3942 Fax: (508) 228-8778
info@rafaelosonauctions.com
www.rafaelosonauctions.com

ABSENTEE BID FORM

Name (Please Print) _____

Address _____

City _____ State _____ Zip Code _____

Driver's License # _____ State _____ Exp _____

Email _____

Phone # _____ Mobile # _____

Phone # on AUCTION DAY _____

SPECIAL SHIPPING (AND OR) DELIVERY INSTRUCTIONS:

All purchases whether in person, phone bids or absentee bids must be removed from the gallery by 5:00pm the day of the sale. Please indicate if arrangements must be made for on-island delivery or off island shipping.

☐ I will pick up my purchases by 5:00pm the day of the sale

☐ I want my purchases delivered on-island

☐ I want my purchases shipped off-island by The Mainland Connection
(508) 228-5229

☐ I want my purchases shipped off-island by the UPS Store
(508) 325-8884

LOT #	DESCRIPTION	MAX BID	+1 BID

Please read the Conditions of Sale. By signing this form, the bidder agrees that all purchases are subject to the Conditions of Sale. Only completed forms with signature will be considered valid.

TERMS: Cash or Good Check; A 20% Buyer's Premium will be added to the hammer price to be paid by the buyer as part of the purchase price. OFFERINGS SUBJECT TO ERROR; ALL GOODS SOLD "AS IS", ALL SALES FINAL. Absentee bids are executed as a courtesy, and Rafael Osona Auctions will not be responsible for any errors or failure to execute bids.

Signature _____ Date _____

**Please return signed copy to confirm your bids by fax, mail, telephone or in person.
Absentee bids must be submitted by 4:00 pm on JULY 12TH, 2019**

Notes

Notes

Notes



RAFAEL OSONA AUCTIONS

Since 1980



SIGNED
W.L. RODERICK



AUGUST 3
★ **AMERICANA, FINE ARTS, MARINE AUCTION** ★
PREVIEW: AUG 1ST & 2ND FROM 10AM-5PM
BID ONLINE AT [BIDSQUARE.COM](http://BID SQUARE.COM)



JOAN MIRO "LE BELUGA" #44/50



RAFAEL OSONA AUCTIONS

Since 1980

2019 SCHEDULE

MARKETPLACE
June 13 – 22
** Buy-It-Now **

June 29

** July 6 **
Furnishings, Décor,
Nantucket Art

** July 13 **
Michael J. Kittredge
Collection

July 20

** August 3 **
Americana, Fine Art
Marine Auction

August 10 * 17 * 24 * 31

Oct. 12 * Dec. 7

2-DAY ADVANCE PREVIEWS
10am-5pm

AMERICAN LEGION HALL
21 WASHINGTON ST.



RAFAELOSONAUCTIONS.COM

508-228-3942

info@RafaelOsonaAuctions.com

CONDITIONS OF SALE

1. Rafael Osona Auctions has exercised great care to catalog and describe correctly the property to be sold, but neither Osona's nor its consignors warrant the correctness of description, attribution, authenticity, physical condition, size, or quality of any property listed in this catalogue. All property offered in this catalogue is sold "AS IS". Prospective bidders should inspect property before bidding to determine its genuineness, authenticity, and whether or not it has been repaired or restored. No sale will be set aside on account of incorrectness, error of cataloguing, or imperfections not noted.
2. Rafael Osona Auctions reserves the right to withdraw any property before or during the sale. The highest bidder acknowledged by the auctioneer will be the purchaser. In the event of any dispute between two or more bidders, the auctioneer shall decide the outcome or may re-offer the article in dispute and his or her decision shall be final.
3. Some lots may be offered subject to a reserve. The Gallery will execute such reserves by bidding for the consignor. In any event or whether or not a lot is subject to a reserve, the auctioneer may reject any bid or raise not commensurate with the value of such a lot. If the auctioneer determines that any opening bid is insufficient, he or she may reject the bid and if having acknowledged any opening bid, he or she decides that any advance thereafter is insufficient, he or she may reject the advance.
4. We will execute absentee bids or accept telephone bids as a convenience to clients who are not present at the auction; however, we are not responsible for any errors or omissions, in connection with their bid. Any execution of absentee or telephone bid by prospective bidders indicates their acceptance of all conditions of sale.
5. Personal and business checks are accepted only if credit has been established with Rafael Osona Auctions, or if bank authorization has been received guaranteeing a personal check. Full payment for each purchaser's account must be received on the date of purchase in the form of cash or check. We reserve the right to hold merchandise purchased by personal or business check until the check has cleared the bank, if we deem such action necessary.
6. A Buyer's Premium of 20% will be added to the hammer price to be paid by the buyer as part of the purchase price.
7. Bidding online on BidSquare.com, a Buyer's Premium of 23% will be added to the hammer price to be paid by the buyer as a part of the purchase price.
8. All purchases including the premium of 20% are subject to the Massachusetts sales tax (currently 6.25%) unless the purchaser possesses a Massachusetts sales tax exemption or resale number and provides a copy of that certificate upon registering for the auction.
9. A paid receipt of the purchase must be presented before goods may be removed from the Gallery.
10. All purchases whether in person, phone bids, or absentee bids must be picked up by 5:00pm the day of the sale, or arrangements must be made for on-island delivery or off-island shipping. The purchaser assumes all risk in regards to the merchandise purchased at the fall of the hammer. We are not responsible for the acts or omissions of truckers or packers of purchased lots, whether or not recommended by us. Packing and handling of purchased lots is at the entire risk of the purchaser.
11. Bidding on any item indicates your acceptance of these terms.

THE MICHAEL J. KITTRIDGE COLLECTION

